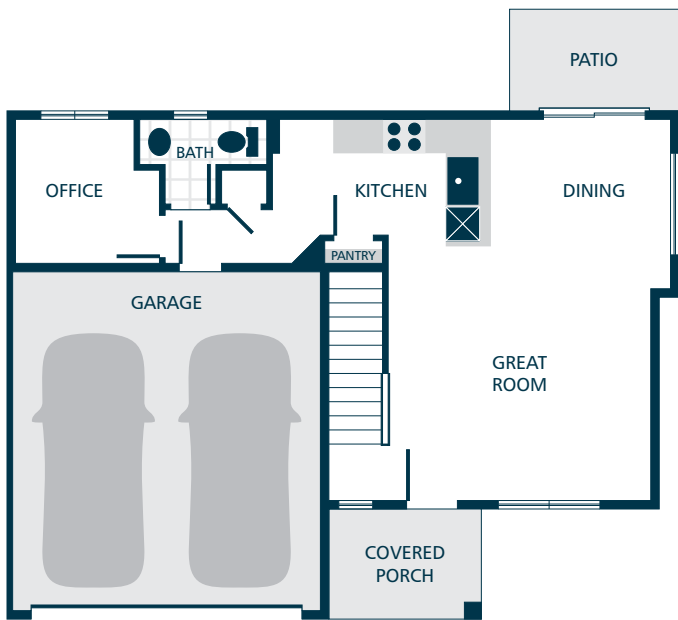
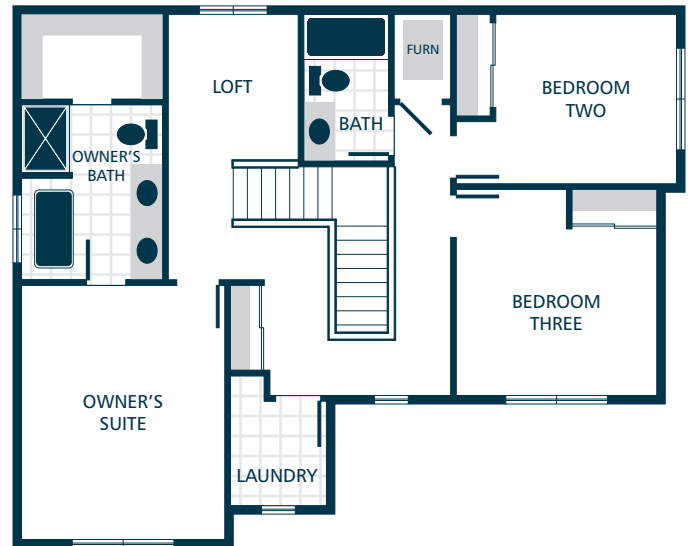




**MASTERPIECE COLLECTION**  
 Premium Inclusions installed on this model.  
 See listing agent for details.



**MAIN FLOOR**



**UPPER FLOOR**



### KITCHENS

- QUARTZ SLAB COUNTERTOPS WITH MATCHING 4" QUARTZ BACKSPLASH
- TIMELESS QUALITY CABINETS WITH CROWN MOULDING
- STAINLESS STEEL DISHWASHER, BUILT IN MICROWAVE, & ELECTRIC RANGE
- GORGEOUS LAMINATE HARDWOOD FLOORING

### LIVING SPACES

- GORGEOUS LAMINATE HARDWOOD FLOORING AT KITCHEN, DINING, & GREAT ROOM
- WHITE PAINTED MILLWORK & 5 PANEL DOORS
- DURABLE VINYL FLOORING IN LAUNDRY (FINISHED LAUNDRY ONLY)
- STAIN RESISTANT CARPET THROUGHOUT

### EXTERIORS

- PROFESSIONAL LANDSCAPING
- PATIO AND/OR DECK
- STEEL GARAGE DOORS
- HIGH QUALITY FIBER CEMENT SIDING
- LIMITED LIFETIME WARRANTED CERTAINTEED VINYL SIDING (SELECT HOMES)
- 30 YEAR ARCHITECTURAL COMPOSITION SHINGLES

### BATHS

- LAMINATE COUNTERTOPS WITH TILE BACKSPLASH ON BATHROOM VANITIES
- DURABLE VINYL FLOORING (EXCLUDES MAIN FLOOR BATH)
- RELAXING LOUNGE TUB IN OWNER'S SUITE (SELECT HOMES)

### EVERYDAY DETAILS

- DUCTLESS MINI SPLIT WITH SUPPLEMENTAL ELECTRIC WALL HEAT (HOMES UNDER 1,500 FINISHED SQFT)
- EFFICIENT HEAT PUMP FOR COOLING/HEATING (HOMES OVER 1,500 FINISHED SQFT)
- HIGH EFFICIENCY, HEAT PUMP WATER HEATER

### UPGRADE OPTIONS

UPGRADE AVAILABILITY IS NOT GUARANTEED.  
PRICING IS SUBJECT TO CHANGE WITHOUT NOTICE.

- GARAGE DOOR OPENER WITH REMOTE **\$1,000**  
WIFI ENABLED
- EXTERIOR KEYPAD FOR GARAGE DOOR OPENER **\$150**
- 6' CEDAR FENCE WITH GATE **\$TBD**  
PRICE VARIES PER HOMESITE DIMENSIONS
- WHITE FAUX WOOD PRIVACY BLINDS **\$TBD**  
PRICE VARIES PER HOMESITE
- SIDE BY SIDE REFRIGERATOR **\$2,800**  
STAINLESS STEEL
- TOP LOAD WASHER WITH DRYER **\$2,500**

#### BUILDER'S CHOICE MASTERPIECE COLLECTION

#### PREMIUM BUILDER INCLUSIONS INSTALLED ON MODELS IN OUR MASTERPIECE COLLECTION

SUBJECT TO CHANGE. SEE LISTING AGENT FOR DETAILS.

- ✓ ENGINEERED HARDWOOD FLOORING AT KITCHEN, DINING, & GREAT ROOM
- ✓ WHITE SHAKER STYLE CABINETS & FULL TILE BACKSPLASH IN KITCHEN
- ✓ QUARTZ COUNTERTOPS, TILE FLOORING, TILE SHOWER, & DOUBLE SINKS IN OWNER'S SUITE
- ✓ TIMELESS STAINED PINE ACCENTS ON EXTERIOR

