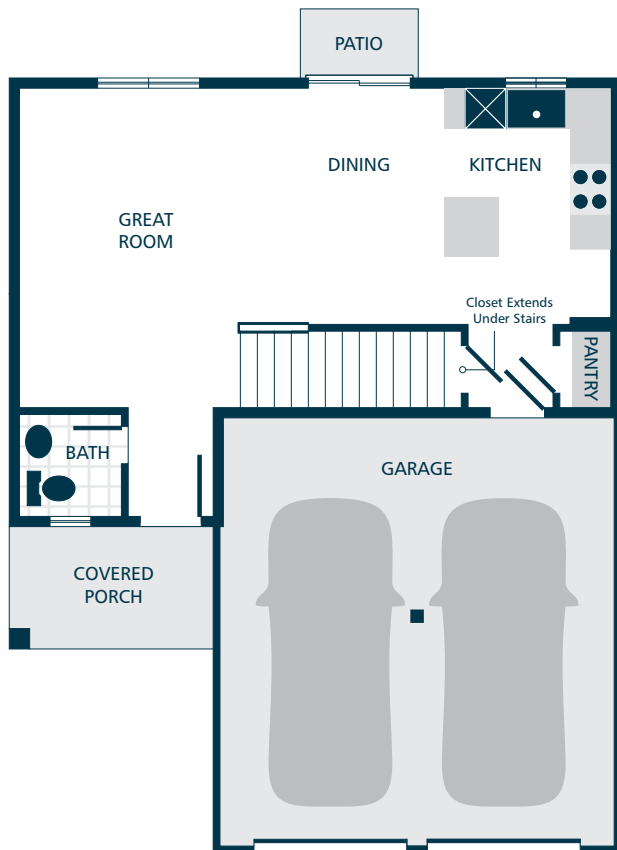


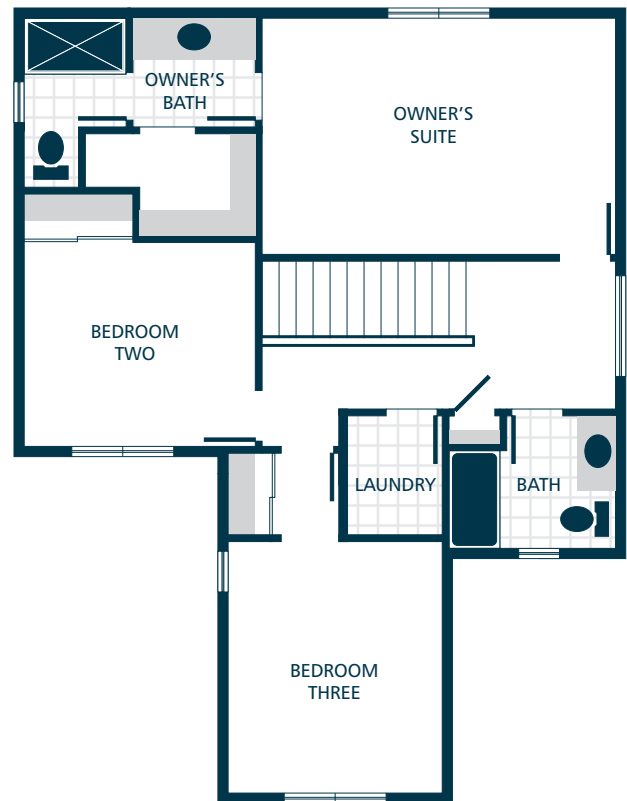
SATHER FARMS

THE BENNETT // DESIGN D

3  | 2.25  | 2  | 1,419 



MAIN FLOOR



UPPER FLOOR



KITCHENS

- QUARTZ SLAB COUNTERTOPS WITH MATCHING 4" QUARTZ BACKSPLASH
- SHAKER STYLE CABINETS WITH CROWN MOULDING
- STAINLESS STEEL DISHWASHER, BUILT IN MICROWAVE, & GAS RANGE
- GORGEOUS LAMINATE VINYL PLANK FLOORING

LIVING SPACES

- GORGEOUS LAMINATE VINYL PLANK FLOORING IN KITCHEN, DINING, & GREAT ROOM
- WHITE PAINTED MILLWORK AND DOORS
- DURABLE VINYL FLOORING IN LAUNDRY
- STAIN RESISTANT CARPET THROUGHOUT

EXTERIORS

- PROFESSIONAL LANDSCAPING
- STEEL GARAGE DOORS
- PATIO/DECK & COVERED PORCH
- HIGH QUALITY FIBER CEMENT SIDING
- 30 YEAR ARCHITECTURAL COMPOSITION SHINGLES

BATHS

- QUARTZ SLAB COUNTERTOPS WITH MATCHING 4" QUARTZ BACKSPLASH ON BATHROOM VANITIES
- DURABLE VINYL FLOORING

EVERYDAY DETAILS

- DUCTLESS MINI SPLIT WITH SUPPLEMENTAL ELECTRIC WALL HEAT (HOMES UNDER 1,500 FINISHED SQFT)
- EFFICIENT HEAT PUMP FOR COOLING/HEATING (HOMES OVER 1,500 FINISHED SQFT)
- HIGH EFFICIENCY, HEAT PUMP WATER HEATER

UPGRADE OPTIONS

UPGRADE AVAILABILITY IS NOT GUARANTEED.
PRICING IS SUBJECT TO CHANGE WITHOUT NOTICE.

- GARAGE DOOR OPENER WITH REMOTE **\$1,000**
WIFI ENABLED
- EXTERIOR KEYPAD FOR GARAGE DOOR OPENER **\$150**
- 6' CEDAR FENCE WITH GATE **\$TBD**
PRICE VARIES PER HOMESITE DIMENSIONS
- WHITE FAUX WOOD PRIVACY BLINDS **\$TBD**
PRICE VARIES PER HOMESITE
- SIDE BY SIDE REFRIGERATOR **\$2,800**
STAINLESS STEEL
- TOP LOAD WASHER WITH DRYER **\$2,500**

