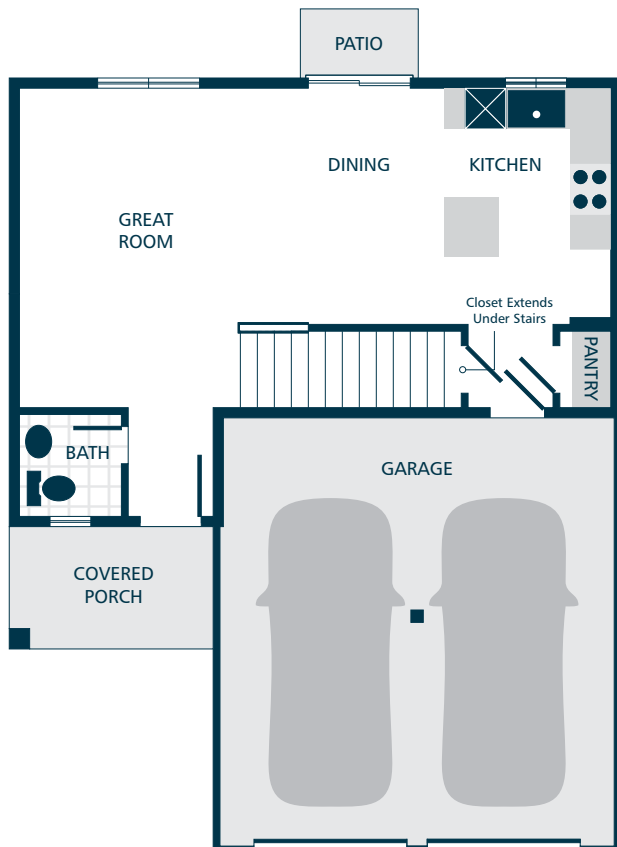


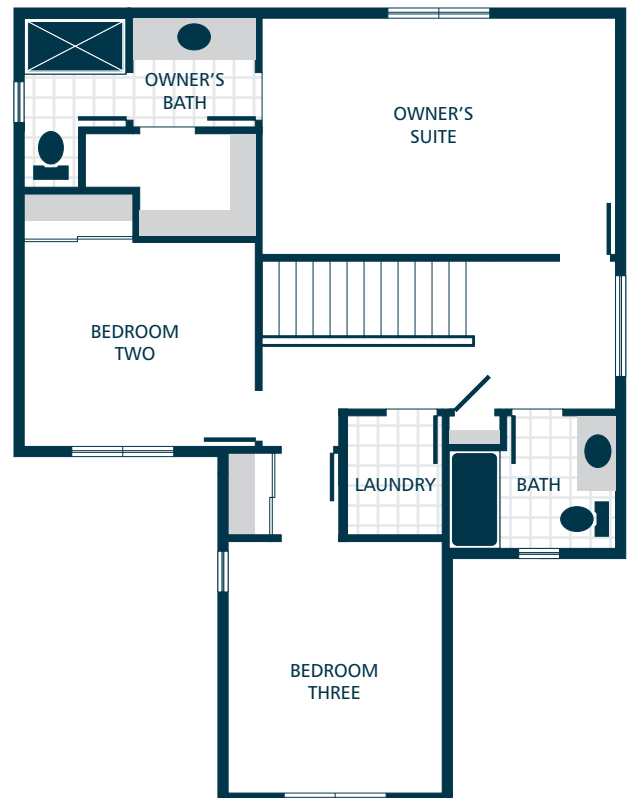
# SATHER FARMS

THE BENNETT // DESIGN D

3  | 2.25  | 2  | 1,419 



MAIN FLOOR



UPPER FLOOR



### KITCHENS

- QUARTZ SLAB COUNTERTOPS WITH MATCHING 4" QUARTZ BACKSPLASH
- SHAKER STYLE CABINETS WITH CROWN MOULDING
- STAINLESS STEEL DISHWASHER, BUILT IN MICROWAVE, & GAS RANGE
- GORGEOUS LAMINATE VINYL PLANK FLOORING

### LIVING SPACES

- GORGEOUS LAMINATE VINYL PLANK FLOORING IN KITCHEN, DINING, & GREAT ROOM
- WHITE PAINTED MILLWORK AND DOORS
- DURABLE VINYL FLOORING IN LAUNDRY
- STAIN RESISTANT CARPET THROUGHOUT

### EXTERIORS

- PROFESSIONAL LANDSCAPING
- STEEL GARAGE DOORS
- PATIO/DECK & COVERED PORCH
- HIGH QUALITY FIBER CEMENT SIDING
- 30 YEAR ARCHITECTURAL COMPOSITION SHINGLES

### BATHS

- QUARTZ SLAB COUNTERTOPS WITH MATCHING 4" QUARTZ BACKSPLASH ON BATHROOM VANITIES
- DURABLE VINYL FLOORING

### EVERYDAY DETAILS

- DUCTLESS MINI SPLIT WITH SUPPLEMENTAL ELECTRIC WALL HEAT (HOMES UNDER 1,500 FINISHED SQFT)
- EFFICIENT HEAT PUMP FOR COOLING/HEATING (HOMES OVER 1,500 FINISHED SQFT)
- HIGH EFFICIENCY, HEAT PUMP WATER HEATER

### UPGRADE OPTIONS

UPGRADE AVAILABILITY IS NOT GUARANTEED.  
PRICING IS SUBJECT TO CHANGE WITHOUT NOTICE.

- GARAGE DOOR OPENER WITH REMOTE **\$1,000**  
WIFI ENABLED
- EXTERIOR KEYPAD FOR GARAGE DOOR OPENER **\$150**
- 6' CEDAR FENCE WITH GATE **\$TBD**  
PRICE VARIES PER HOMESITE DIMENSIONS
- WHITE FAUX WOOD PRIVACY BLINDS **\$TBD**  
PRICE VARIES PER HOMESITE
- SIDE BY SIDE REFRIGERATOR **\$2,800**  
STAINLESS STEEL
- TOP LOAD WASHER WITH DRYER **\$2,500**

#### BUILDER'S CHOICE RESERVE COLLECTION

PREMIUM BUILDER INCLUSIONS  
INSTALLED ON MODELS IN OUR  
RESERVE COLLECTION

SUBJECT TO CHANGE. SEE LISTING AGENT FOR DETAILS.

- ✓ TILE FLOORING, TILE SHOWER, & DUAL SHOWERHEAD SYSTEM IN OWNER'S SUITE
- ✓ FULL-HEIGHT TILE BACKSPLASH IN KITCHEN
- ✓ NATURAL GAS HOOKUP FOR BBQ
- ✓ UPPER CABINETS IN LAUNDRY

