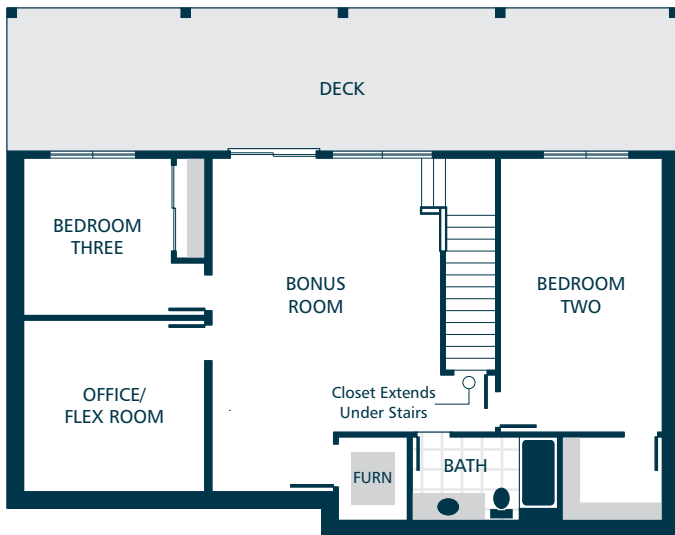


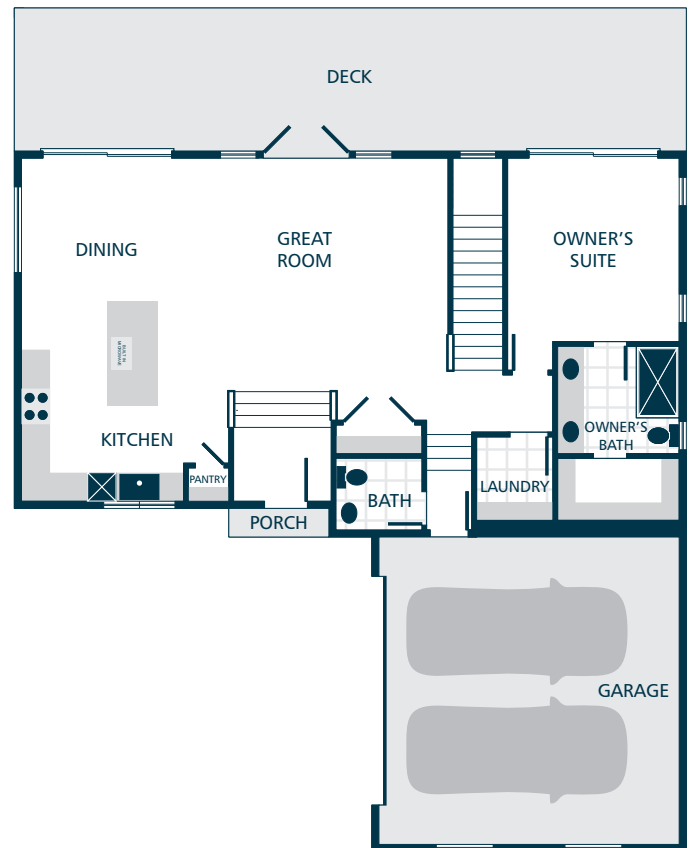
CAMANO SHORES

THE PEARL // DESIGN A

3  | 2.25  | 2  | 2,450 



LOWER FLOOR



MAIN FLOOR



KITCHENS

- QUARTZ SLAB COUNTERTOPS WITH MODERN TILE BACKSPLASH
- SHAKER STYLE CABINETS WITH CROWN MOULDING
- EFFICIENT, STAINLESS STEEL DISHWASHER & BUILT IN MICROWAVE
- GOURMET HOOD VENT & PREMIUM SLIDE IN ELECTRIC RANGE
- GORGEOUS ENGINEERED HARDWOOD FLOORING
- STYLISH PENDANT LIGHT ACCENTS

LIVING SPACES

- GORGEOUS ENGINEERED HARDWOOD FLOORING AT KITCHEN, DINING, GREAT ROOM, & OWNER'S SUITE
- CONTEMPORARY OPEN RAILING ACCENTS
- LUXURY VINYL TILE FLOORING IN LAUNDRY
- HIGH CEILINGS
- ABUNDANT NATURAL LIGHT

BATHS

- QUARTZ SLAB COUNTERTOPS, DOUBLE SINKS, TILE FLOORING, & CUSTOM TILE SHOWER IN OWNER'S SUITE
- QUARTZ SLAB COUNTERTOPS WITH MATCHING 4" QUARTZ BACKSPLASH ON BATHROOM VANITIES
- LUXURY VINYL TILE FLOORING (EXCLUDES OWNER'S SUITE)
- TILE FLOORING IN MAIN FLOOR BATHROOM

EXTERIORS

- PROFESSIONAL LANDSCAPING
- RUSTIC STONE AND/OR CEDAR ACCENTS
- FENCING AT REAR PROPERTY LINE
- 2 DECKS
- HIGH QUALITY FIBER CEMENT SIDING
- SLEEK METAL ROOFING

EVERYDAY DETAILS

- HEAT PUMP FOR COOLING/HEATING
- HIGH EFFICIENCY, HEAT PUMP WATER HEATER

UPGRADE OPTIONS

UPGRADE AVAILABILITY IS NOT GUARANTEED.
PRICING IS SUBJECT TO CHANGE WITHOUT NOTICE.

- GARAGE DOOR OPENER WITH REMOTE **\$1,000**
WIFI ENABLED
- EXTERIOR KEYPAD FOR GARAGE DOOR OPENER **\$150**
- 6' CEDAR FENCE WITH GATE **\$TBD**
PRICE VARIES PER HOMESITE DIMENSIONS
- WHITE FAUX WOOD PRIVACY BLINDS **\$TBD**
PRICE VARIES PER HOMESITE
- FRENCH DOOR REFRIGERATOR **\$3,000**
STAINLESS STEEL
- SIDE BY SIDE REFRIGERATOR **\$2,800**
STAINLESS STEEL
- TOP LOAD WASHER WITH DRYER **\$2,800**

