


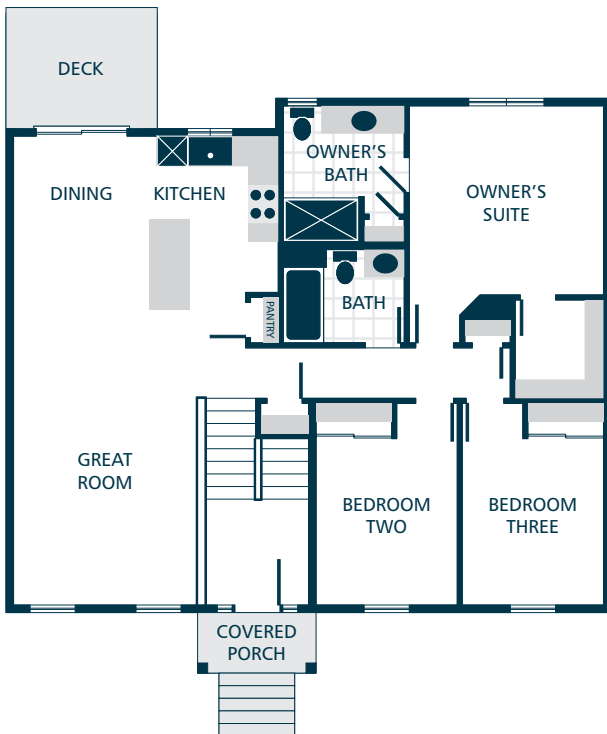


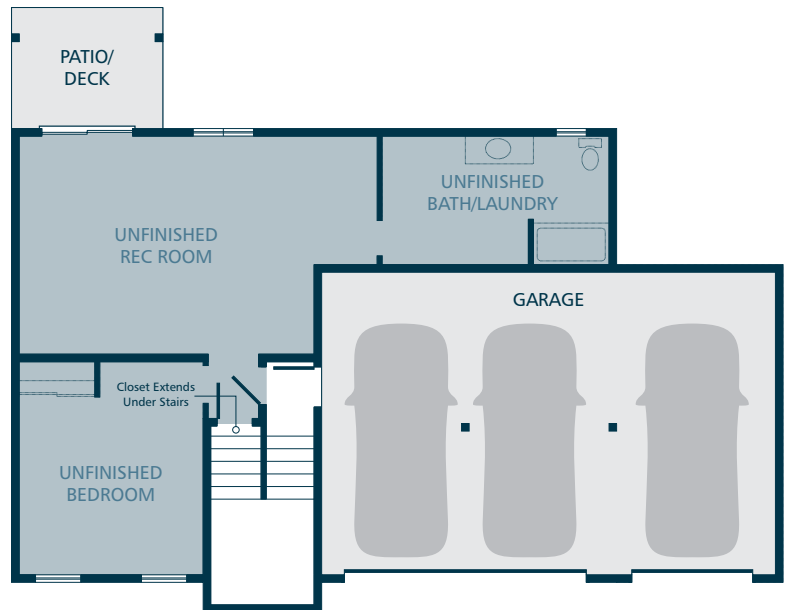
# TIMBER TOP

## THE BROOKE // DESIGN B

3  | 1.75  | 3  | 2,033 SQ. FT. 1,311 FINISHED



**MAIN FLOOR**



**LOWER FLOOR**



### KITCHENS

- QUARTZ SLAB COUNTERTOPS WITH MATCHING 4" QUARTZ BACKSPLASH
- TIMELESS QUALITY CABINETS WITH CROWN MOULDING
- STAINLESS STEEL DISHWASHER, BUILT IN MICROWAVE, & ELECTRIC RANGE
- GORGEOUS LAMINATE HARDWOOD FLOORING

### LIVING SPACES

- GORGEOUS LAMINATE HARDWOOD FLOORING IN KITCHEN, DINING, & GREAT ROOM
- WHITE PAINTED MILLWORK AND DOORS
- LUXURY VINYL TILE FLOORING IN LAUNDRY (FINISHED LAUNDRY ONLY)
- STAIN RESISTANT CARPET THROUGHOUT

### EXTERIORS

- PROFESSIONAL FRONT YARD LANDSCAPING
- STEEL GARAGE DOORS
- PATIO/DECK & COVERED PORCH
- HIGH QUALITY FIBER CEMENT SIDING
- 30 YEAR ARCHITECTURAL COMPOSITION SHINGLES

### BATHS

- QUARTZ SLAB COUNTERTOPS WITH MATCHING 4" QUARTZ BACKSPLASH
- LUXURY VINYL TILE FLOORING

### EVERYDAY DETAILS

- DUCTLESS MINI SPLIT WITH SUPPLEMENTAL ELECTRIC WALL HEAT
- HIGH EFFICIENCY, HEAT PUMP WATER HEATER

### UPGRADE OPTIONS

UPGRADE AVAILABILITY IS NOT GUARANTEED.  
PRICING IS SUBJECT TO CHANGE WITHOUT NOTICE.

- GARAGE DOOR OPENER WITH REMOTE \$800  
WIFI ENABLED
- EXTERIOR KEYPAD FOR GARAGE DOOR OPENER \$150
- 6' CEDAR FENCE WITH GATE \$TBD  
PRICE VARIES PER HOMESITE DIMENSIONS
- WHITE FAUX WOOD PRIVACY BLINDS \$TBD  
PRICE VARIES PER HOMESITE
- SIDE BY SIDE REFRIGERATOR \$2,800  
STAINLESS STEEL
- TOP LOAD WASHER WITH DRYER \$2,500

