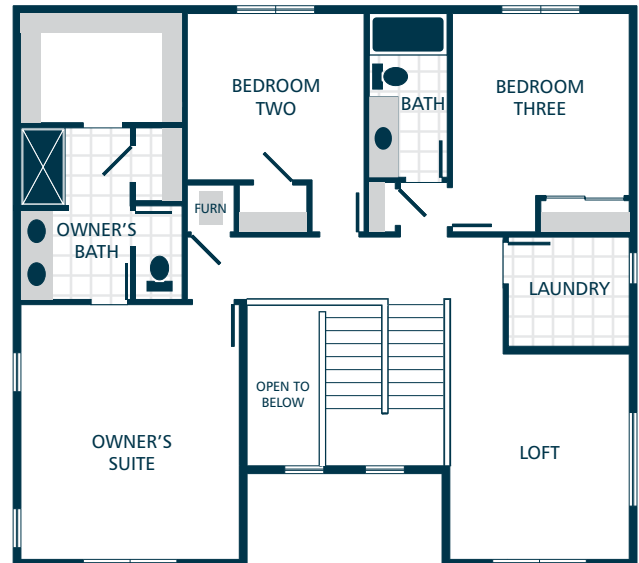


**MAIN FLOOR**



**UPPER FLOOR**



## KITCHENS

- QUARTZ SLAB COUNTERTOPS WITH MATCHING 4" QUARTZ BACKSPLASH
- TIMELESS QUALITY CABINETS WITH CROWN MOULDING
- STAINLESS STEEL DISHWASHER, BUILT IN MICROWAVE, & ELECTRIC RANGE
- GORGEOUS LAMINATE HARDWOOD FLOORING

## LIVING SPACES

- GORGEOUS LAMINATE HARDWOOD FLOORING IN KITCHEN, DINING, & GREAT ROOM
- WHITE PAINTED MILLWORK AND DOORS
- DURABLE VINYL FLOORING IN LAUNDRY
- STAIN RESISTANT CARPET THROUGHOUT

## EXTERIORS

- PROFESSIONAL LANDSCAPING
- STAINED PINE ACCENTS
- PATIO/DECK & COVERED PORCH
- HIGH QUALITY FIBER CEMENT SIDING
- 30 YEAR ARCHITECTURAL COMPOSITION SHINGLES

## BATHS

- DOUBLE SINKS IN OWNER'S SUITE (SELECT HOMES)
- LAMINATE COUNTERTOPS WITH TILE BACKSPLASH ON BATHROOM VANITIES
- DURABLE VINYL FLOORING

## EVERYDAY DETAILS

- DUCTLESS MINI SPLIT WITH SUPPLEMENTAL ELECTRIC WALL HEAT (HOMES UNDER 1,500 FINISHED SQFT)
- EFFICIENT HEAT PUMP FOR COOLING/HEATING (HOMES OVER 1,500 FINISHED SQFT)
- HIGH EFFICIENCY, HEAT PUMP WATER HEATER

## UPGRADE OPTIONS

UPGRADE AVAILABILITY IS NOT GUARANTEED.  
PRICING IS SUBJECT TO CHANGE WITHOUT NOTICE.

- GARAGE DOOR OPENER WITH REMOTE **\$1,000**  
WIFI ENABLED
- EXTERIOR KEYPAD FOR GARAGE DOOR OPENER **\$150**
- 6' CEDAR FENCE WITH GATE **\$TBD**  
PRICE VARIES PER HOMESITE DIMENSIONS
- WHITE FAUX WOOD PRIVACY BLINDS **\$TBD**  
PRICE VARIES PER HOMESITE
- SIDE BY SIDE REFRIGERATOR **\$2,800**  
STAINLESS STEEL
- TOP LOAD WASHER WITH DRYER **\$2,500**

