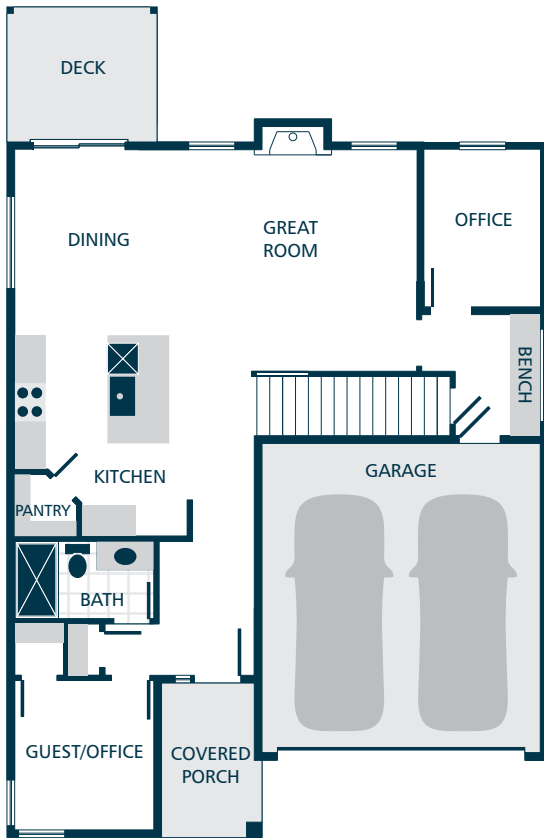
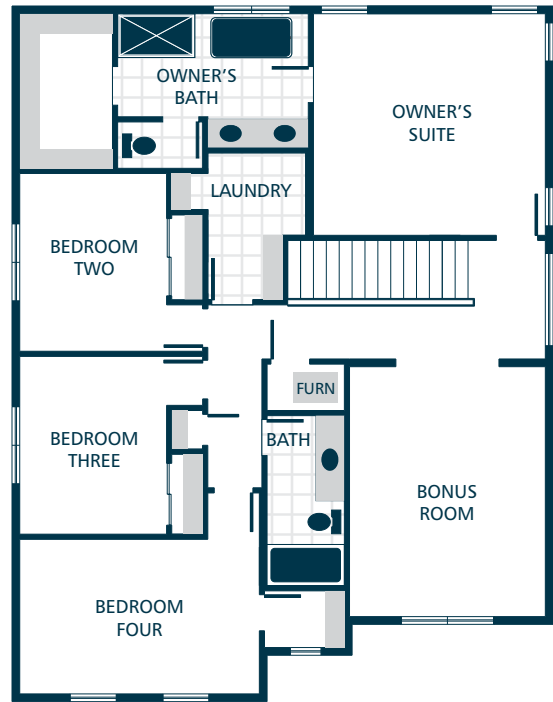


LOWER FLOOR



MAIN FLOOR



UPPER FLOOR



KITCHENS

- QUARTZ SLAB COUNTERTOPS WITH MODERN TILE BACKSPLASH
- SHAKER STYLE CABINETS WITH CROWN MOULDING
- EFFICIENT, STAINLESS STEEL DISHWASHER, BUILT IN MICROWAVE, & PREMIUM SLIDE IN GAS RANGE
- GORGEOUS ENGINEERED HARDWOOD FLOORING
- STYLISH PENDANT LIGHT ACCENTS

LIVING SPACES

- GORGEOUS ENGINEERED HARDWOOD FLOORING AT KITCHEN, DINING, & GREAT ROOM
- GAS FIREPLACE WITH MANTEL & QUARTZ SURROUND
- CONTEMPORARY OPEN RAILING ACCENTS (SELECT HOMES)
- CONVENIENT BUILT IN BENCH/DROP ZONE
- DURABLE VINYL FLOORING & FOLDING COUNTERS IN LAUNDRY

BATHS

- QUARTZ SLAB COUNTERTOPS, DOUBLE SINKS, TILE FLOORING, TILE SHOWER, & DUAL SHOWERHEAD SYSTEM IN OWNER'S SUITE
- RELAXING LOUNGE TUB IN OWNER'S SUITE
- QUARTZ SLAB COUNTERTOPS WITH TILE BACKSPLASH ON BATHROOM VANITIES
- DURABLE VINYL FLOORING IN BATHROOMS (EXCLUDES OWNER'S SUITE)
- SHOWER & TILE FLOORING IN MAIN FLOOR BATHROOM (SELECT HOMES)

EXTERIORS

- PROFESSIONAL LANDSCAPING
- RUSTIC STONE & STAINED PINE ACCENTS
- PATIO/DECK & COVERED PORCH
- HIGH QUALITY FIBER CEMENT SIDING
- 30 YEAR ARCHITECTURAL COMPOSITION SHINGLES

EVERYDAY DETAILS

- HEAT PUMP FOR COOLING/HEATING (LOWER LEVEL WILL HAVE SUPPLEMENTAL DUCTLESS MINI SPLIT AND ELECTRIC WALL HEAT)
- HIGH EFFICIENCY, HEAT PUMP WATER HEATER

UPGRADE OPTIONS

UPGRADE AVAILABILITY IS NOT GUARANTEED.
PRICING IS SUBJECT TO CHANGE WITHOUT NOTICE.

- GARAGE DOOR OPENER WITH REMOTE **\$1,000**
WIFI ENABLED
- EXTERIOR KEYPAD FOR GARAGE DOOR OPENER **\$150**
- WHITE FAUX WOOD PRIVACY BLINDS **\$TBD**
PRICE VARIES PER HOMESITE
- 6' CEDAR FENCE WITH GATE **\$TBD**
PRICE VARIES PER HOMESITE
- SIDE BY SIDE REFRIGERATOR **\$2,800**
STAINLESS STEEL
- TOP LOAD WASHER WITH DRYER **\$2,500**

