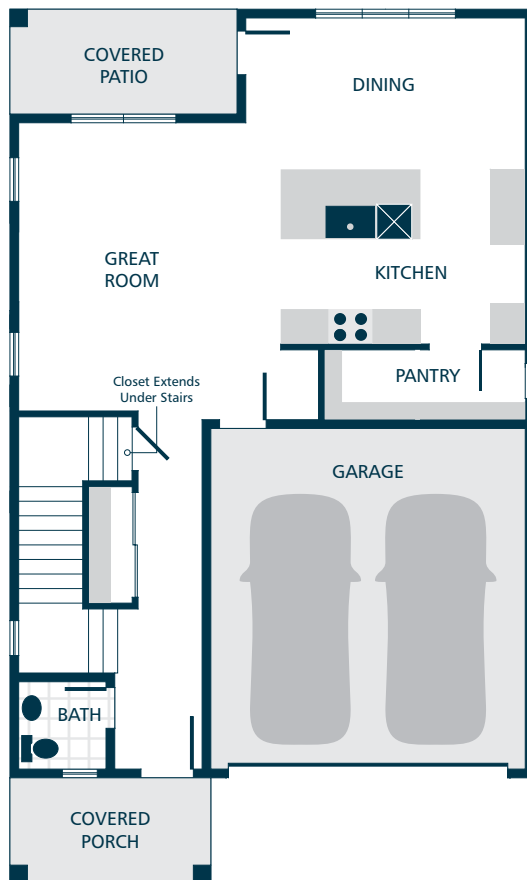


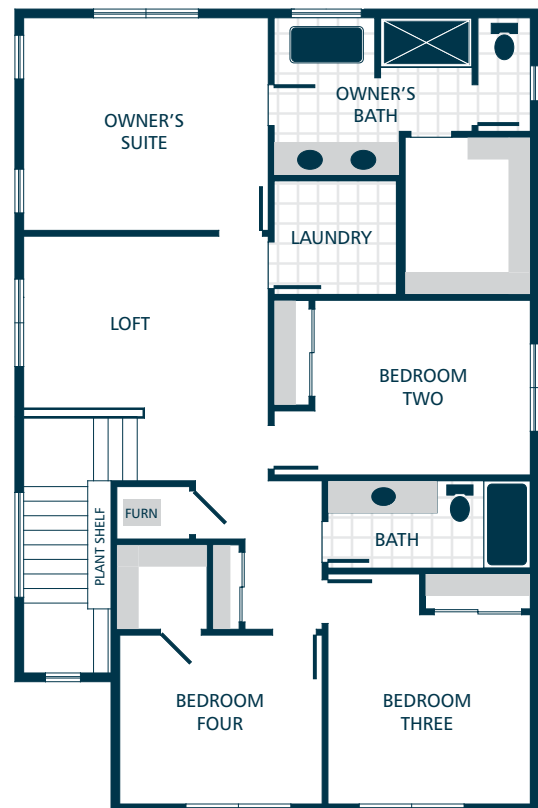


MASTERPIECE COLLECTION

Premium Inclusions installed on this model.
See listing agent for details.



MAIN FLOOR



UPPER FLOOR



KITCHENS

- QUARTZ SLAB COUNTERTOPS WITH MATCHING 4" QUARTZ BACKSPLASH
- TIMELESS QUALITY CABINETS WITH CROWN MOULDING
- STAINLESS STEEL DISHWASHER, BUILT IN MICROWAVE, & ELECTRIC RANGE
- GORGEOUS LAMINATE HARDWOOD FLOORING

LIVING SPACES

- GORGEOUS LAMINATE HARDWOOD FLOORING AT KITCHEN, DINING, & GREAT ROOM
- WHITE PAINTED MILLWORK & 5 PANEL DOORS
- DURABLE VINYL FLOORING IN LAUNDRY (FINISHED LAUNDRY ONLY)
- STAIN RESISTANT CARPET THROUGHOUT

EXTERIORS

- PROFESSIONAL LANDSCAPING
- PATIO AND/OR DECK
- STEEL GARAGE DOORS
- FIBER CEMENT SIDING ACCENTS ON FRONT EXTERIOR
- LIMITED LIFETIME WARRANTED CERTAINTEED VINYL SIDING
- 30 YEAR ARCHITECTURAL COMPOSITION SHINGLES

BATHS

- LAMINATE COUNTERTOPS WITH TILE BACKSPLASH ON BATHROOM VANITIES
- DURABLE VINYL FLOORING (EXCLUDES MAIN FLOOR BATH)
- RELAXING LOUNGE TUB IN OWNER'S SUITE (SELECT HOMES)

EVERYDAY DETAILS

- DUCTLESS MINI SPLIT WITH SUPPLEMENTAL ELECTRIC WALL HEAT (HOMES UNDER 1,500 FINISHED SQFT)
- EFFICIENT HEAT PUMP FOR COOLING/HEATING (HOMES OVER 1,500 FINISHED SQFT)
- HIGH EFFICIENCY, HEAT PUMP WATER HEATER

UPGRADE OPTIONS

UPGRADE AVAILABILITY IS NOT GUARANTEED.
PRICING IS SUBJECT TO CHANGE WITHOUT NOTICE.

- GARAGE DOOR OPENER WITH REMOTE **\$800**
WIFI ENABLED
- EXTERIOR KEYPAD FOR GARAGE DOOR OPENER **\$150**
- 6' CEDAR FENCE WITH GATE **\$TBD**
PRICE VARIES PER HOMESITE DIMENSIONS
- WHITE FAUX WOOD PRIVACY BLINDS **\$TBD**
PRICE VARIES PER HOMESITE
- SIDE BY SIDE REFRIGERATOR **\$2,800**
STAINLESS STEEL
- TOP LOAD WASHER WITH DRYER **\$2,500**

BUILDER'S CHOICE MASTERPIECE COLLECTION

PREMIUM BUILDER INCLUSIONS INSTALLED ON MODELS IN OUR MASTERPIECE COLLECTION

SUBJECT TO CHANGE. SEE LISTING AGENT FOR DETAILS.

- ✓ ENGINEERED HARDWOOD FLOORING AT KITCHEN, DINING, & GREAT ROOM
- ✓ WHITE SHAKER STYLE CABINETS & FULL TILE BACKSPLASH IN KITCHEN
- ✓ QUARTZ COUNTERTOPS, TILE FLOORING, TILE SHOWER, & DOUBLE SINKS IN OWNER'S SUITE
- ✓ 50 YEAR WARRANTED FIBER CEMENT SIDING ON ENTIRE EXTERIOR & STAINED PINE ACCENTS

