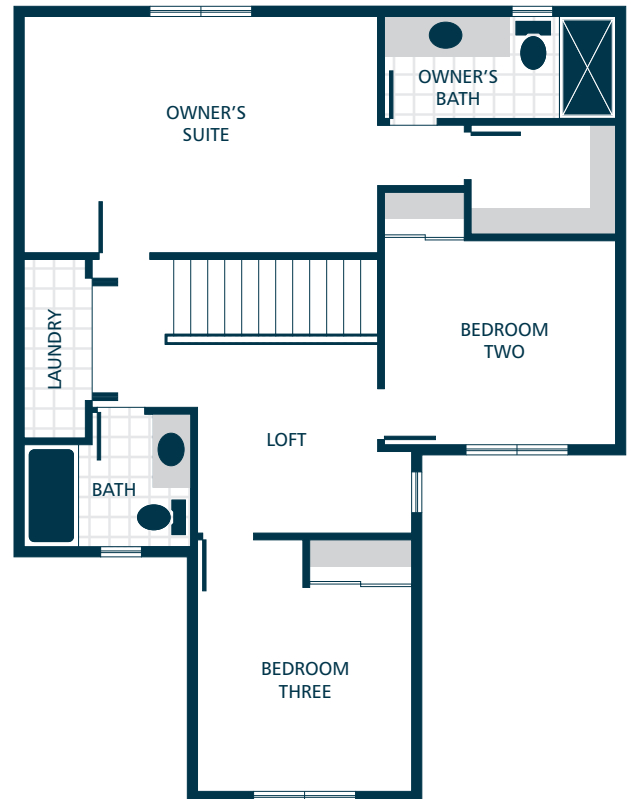


MAIN FLOOR



UPPER FLOOR



KITCHENS

- QUARTZ SLAB COUNTERTOPS WITH ACCENT BACKSPLASH
- TIMELESS QUALITY CABINETS WITH CROWN MOULDING
- EFFICIENT, STAINLESS STEEL DISHWASHER, BUILT IN MICROWAVE, & ELECTRIC RANGE
- GORGEOUS LAMINATE HARDWOOD FLOORING

LIVING SPACES

- GORGEOUS LAMINATE HARDWOOD FLOORING IN KITCHEN, DINING, & GREAT ROOM
- WHITE PAINTED MILLWORK & 5 PANEL DOORS
- DURABLE VINYL FLOORING IN LAUNDRY
- STAIN RESISTANT CARPET THROUGHOUT

EXTERIORS

- PROFESSIONAL LANDSCAPING
- BACKYARD PATIO
- STAINED PINE ACCENTS
- STEEL GARAGE DOORS
- 50 YEAR WARRANTED FIBER CEMENT SIDING
- 30 YEAR ARCHITECTURAL COMPOSITION SHINGLES

BATHS

- LAMINATE COUNTERTOPS WITH TILE BACKSPLASH ON BATHROOM VANITIES & DURABLE VINYL FLOORING

EVERYDAY DETAILS

- DUCTLESS MINI SPLIT WITH SUPPLEMENTAL ELECTRIC WALL HEAT
- 40 GAL. ELECTRIC WATER HEATER

UPGRADE OPTIONS

UPGRADE AVAILABILITY IS NOT GUARANTEED.
PRICING IS SUBJECT TO CHANGE WITHOUT NOTICE.

- GARAGE DOOR OPENER WITH REMOTE **\$800**
WIFI ENABLED
- EXTERIOR KEYPAD FOR GARAGE DOOR OPENER **\$150**
- 6' CEDAR FENCE WITH GATE **\$TBD**
PRICE VARIES PER HOMESITE DIMENSIONS
- WHITE FAUX WOOD PRIVACY BLINDS **\$TBD**
PRICE VARIES PER HOMESITE
- SIDE BY SIDE REFRIGERATOR **\$2,800**
STAINLESS STEEL
- TOP LOAD WASHER WITH DRYER **\$2,500**

