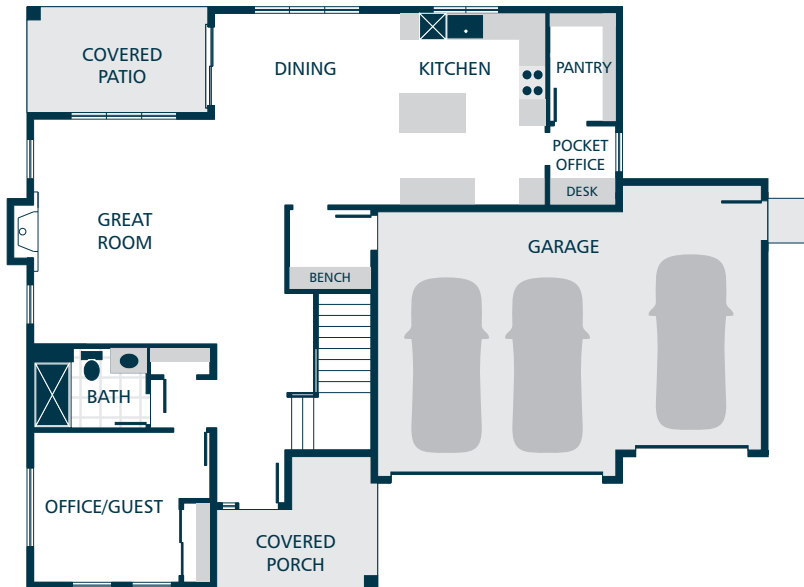
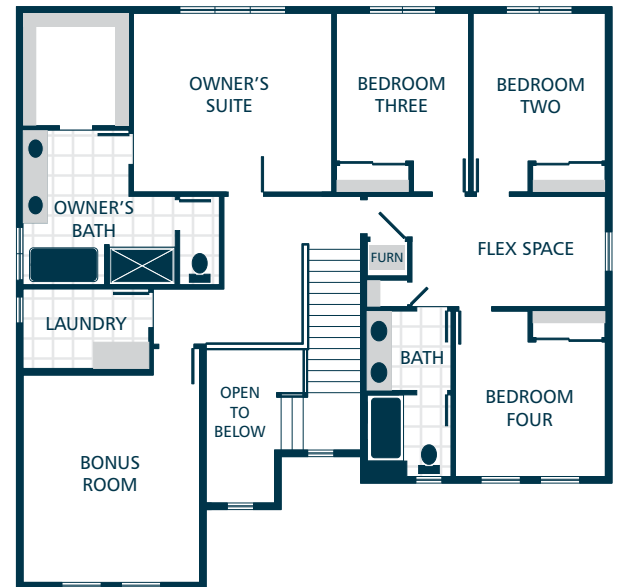


SHOP
(DETACHED)



MAIN FLOOR



UPPER FLOOR



KITCHENS

- QUARTZ SLAB COUNTERTOPS WITH MODERN TILE BACKSPLASH
- SHAKER STYLE CABINETS WITH CROWN MOULDING
- STAINLESS STEEL SIDE BY SIDE REFRIGERATOR
- EFFICIENT, STAINLESS STEEL DISHWASHER, BUILT IN MICROWAVE, & PREMIUM SLIDE IN GAS RANGE
- GORGEOUS ENGINEERED HARDWOOD FLOORING
- STYLISH PENDANT LIGHT ACCENTS

LIVING SPACES

- GORGEOUS ENGINEERED HARDWOOD FLOORING AT KITCHEN, DINING, & GREAT ROOM
- GAS FIREPLACE WITH MANTEL & QUARTZ SURROUND
- CONTEMPORARY OPEN RAILING ACCENTS
- APRON WRAP MILLWORK ON WINDOWS
- CONVENIENT BUILT IN BENCH/DROP ZONE (SELECT HOMES)
- FRONT LOAD WASHER WITH MATCHING DRYER IN LAUNDRY
- LUXURY VINYL TILE FLOORING IN LAUNDRY

EXTERIORS

- PROFESSIONAL LANDSCAPING
- RUSTIC STONE & STAINED PINE ACCENTS
- COVERED PORCH & PATIO
- DETACHED SHOP (SELECT HOMES)
- 50 YEAR WARRANTED FIBER CEMENT SIDING
- 30 YEAR ARCHITECTURAL COMPOSITION SHINGLES

BATHS

- QUARTZ SLAB COUNTERTOPS, DOUBLE SINKS, TILE FLOORING, TILE SHOWER, & DUAL SHOWERHEAD SYSTEM IN OWNER'S SUITE
- RELAXING LOUNGE TUB IN OWNER'S SUITE
- QUARTZ SLAB COUNTERTOPS WITH TILE BACKSPLASH ON BATHROOM VANITIES
- LUXURY VINYL TILE FLOORING IN BATHROOMS (EXCLUDES OWNER'S SUITE & MAIN FLOOR BATHROOM)
- TILE FLOORING & SHOWER IN MAIN FLOOR BATHROOM

EVERYDAY DETAILS

- HEAT PUMP FOR COOLING/HEATING
- HIGH EFFICIENCY, HEAT PUMP WATER HEATER

UPGRADE OPTIONS

UPGRADE AVAILABILITY IS NOT GUARANTEED.
PRICING IS SUBJECT TO CHANGE WITHOUT NOTICE.

- GARAGE DOOR OPENER WITH REMOTE **\$800**
WIFI ENABLED
- EXTERIOR KEYPAD FOR GARAGE DOOR OPENER **\$150**
- TEMPERATURE CONTROLLED FIREPLACE FAN **\$800**
- WHITE FAUX WOOD PRIVACY BLINDS **\$TBD**
PRICE VARIES PER HOMESITE
- 6' CEDAR FENCE WITH GATE **\$TBD**
PRICE VARIES PER HOMESITE

