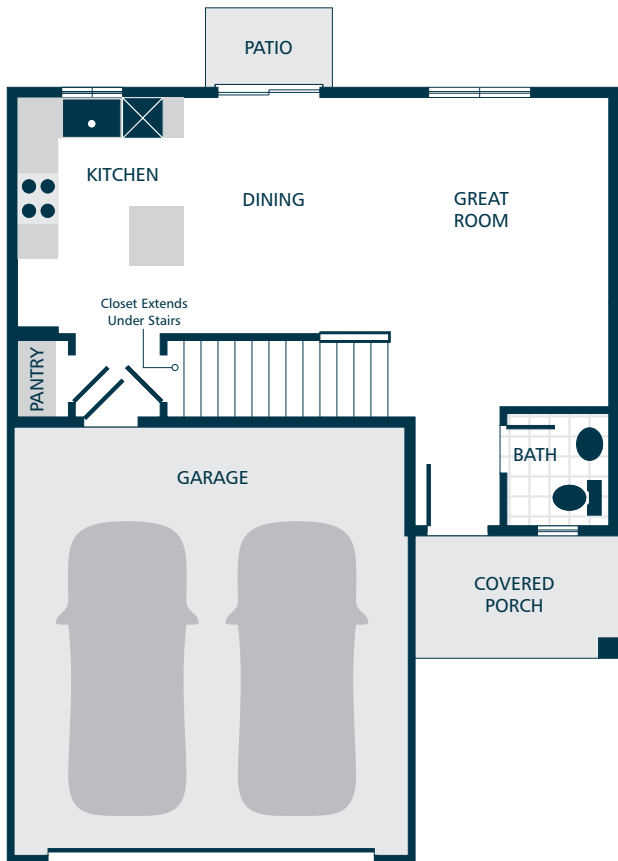


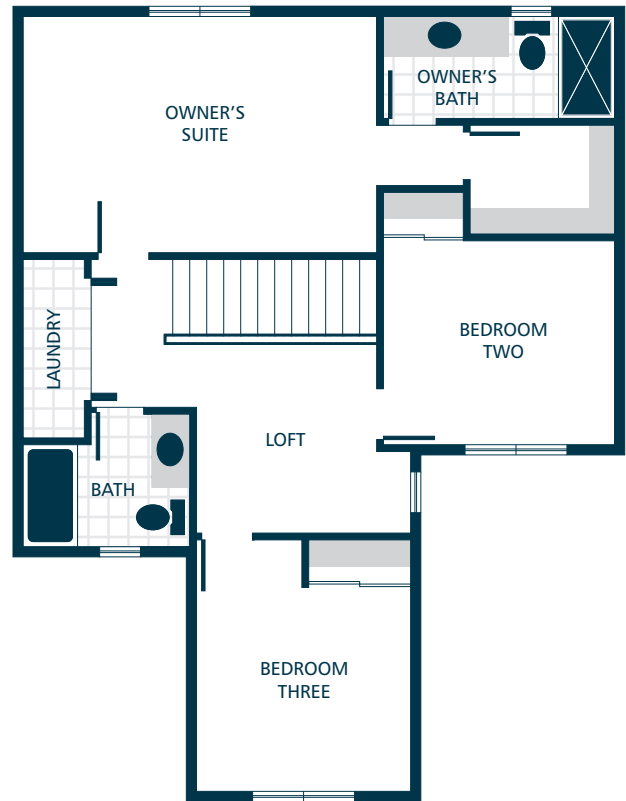
SUMMERSET *springs*

THE BENNETT // DESIGN A

3  | 2.25  | 2  | 1,419 



MAIN FLOOR



UPPER FLOOR



KITCHENS

- TIMELESS LAMINATE COUNTERTOPS WITH BEAUTIFUL 4" TILE BACKSPLASH
- TRADITIONAL STYLE CABINETS WITH CROWN MOULDING
- EFFICIENT, BLACK DISHWASHER, HOOD FAN, & ELECTRIC RANGE
- GORGEOUS LAMINATE HARDWOOD FLOORING

LIVING SPACES

- GORGEOUS LAMINATE HARDWOOD FLOORING AT ENTRY, KITCHEN, & DINING
- WHITE PAINTED MILLWORK & 5 PANEL DOORS
- DURABLE VINYL FLOORING IN LAUNDRY (FINISHED LAUNDRY ONLY)
- STAIN RESISTANT CARPET THROUGHOUT

EXTERIORS

- PROFESSIONAL FRONT YARD LANDSCAPING
- PATIO AND/OR DECK
- STEEL GARAGE DOORS
- 50 YEAR WARRANTED FIBER CEMENT SIDING
- 30 YEAR ARCHITECTURAL COMPOSITION SHINGLES

BATHS

- LAMINATE COUNTERTOPS WITH TILE BACKSPLASH AND DURABLE VINYL FLOORING IN BATHROOMS WITH VANITIES
- DOUBLE SINKS IN OWNER'S BATHROOM (SELECT HOMES)

EVERYDAY DETAILS

- DUCTLESS MINI SPLIT WITH SUPPLEMENTAL ELECTRIC WALL HEAT
- 40 GAL. ELECTRIC WATER HEATER

UPGRADE OPTIONS

UPGRADE AVAILABILITY IS NOT GUARANTEED.
PRICING IS SUBJECT TO CHANGE WITHOUT NOTICE.

- GARAGE DOOR OPENER WITH REMOTE **\$800**
WIFI ENABLED
- EXTERIOR KEYPAD FOR GARAGE DOOR OPENER **\$150**
- 6' CEDAR FENCE WITH GATE **\$TBD**
PRICE VARIES PER HOMESITE DIMENSIONS
- WHITE FAUX WOOD PRIVACY BLINDS **\$TBD**
PRICE VARIES PER HOMESITE
- SIDE BY SIDE REFRIGERATOR **\$2,800**
BLACK OR STAINLESS STEEL
- TOP LOAD WASHER WITH DRYER **\$2,500**

BUILDER'S CHOICE PLATINUM PACKAGE

PREMIUM BUILDER INCLUSIONS INSTALLED ON SELECT HOMES

PRICING AND AVAILABILITY SUBJECT TO CHANGE. SEE LISTING AGENT FOR DETAILS.

- ✓ QUARTZ SLAB COUNTERTOPS IN KITCHEN
- ✓ STAINLESS STEEL APPLIANCES
- ✓ BUILT IN MICROWAVE HOOD FAN & GARBAGE DISPOSAL IN KITCHEN
- ✓ LAMINATE HARDWOOD FLOORING IN GREAT ROOM
- ✓ BACKYARD LANDSCAPING

