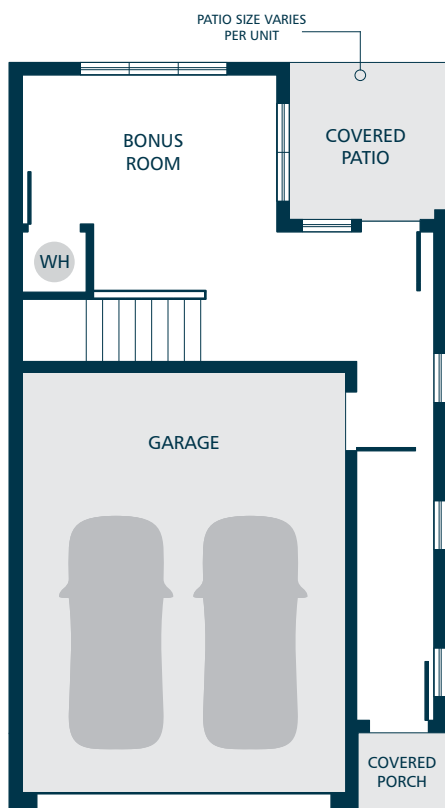
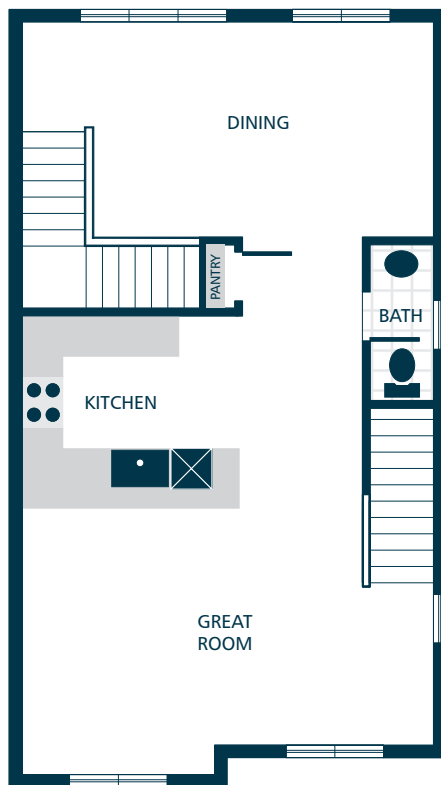




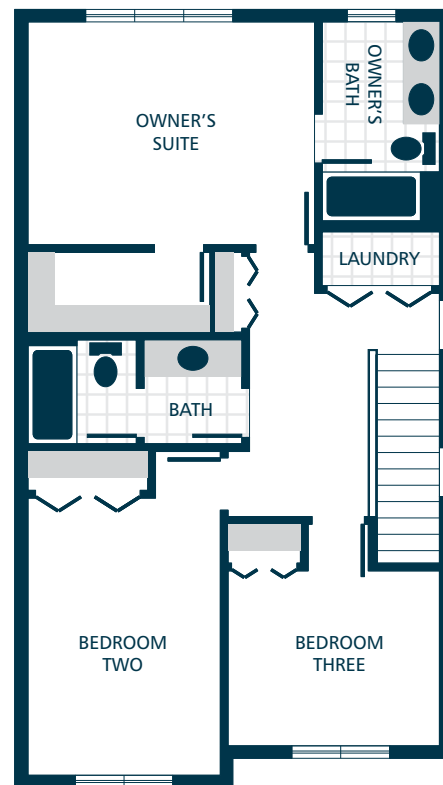
END UNIT



LOWER



MAIN



UPPER



KITCHENS

- TIMELESS LAMINATE COUNTERTOPS WITH BEAUTIFUL 4" TILE BACKSPLASH
- TRADITIONAL STYLE CABINETS WITH CROWN MOULDING
- HIGH QUALITY, BLACK DISHWASHER, BUILT IN MICROWAVE, & ELECTRIC RANGE
- GORGEOUS LAMINATE HARDWOOD FLOORING

LIVING SPACES

- GORGEOUS LAMINATE HARDWOOD FLOORING AT ENTRY, KITCHEN, DINING, & GREAT ROOM
- WHITE PAINTED MILLWORK & 5 PANEL DOORS
- ABUNDANT NATURAL LIGHT
- DURABLE VINYL FLOORING IN LAUNDRY
- STAIN RESISTANT CARPET THROUGHOUT

BATHS

- LAMINATE COUNTERTOPS WITH TILE BACKSPLASH ON BATHROOM VANITIES & DURABLE VINYL FLOORING
- DOUBLE SINKS IN UPPER LEVEL BATHROOM (SELECT HOMES)

EVERYDAY DETAILS

- DUCTLESS MINI SPLIT WITH SUPPLEMENTAL ELECTRIC WALL HEAT
- 40 GAL. ELECTRIC WATER HEATER

EXTERIORS

- PROFESSIONAL LANDSCAPING
- PATIO AND/OR DECK (SELECT HOMES)
- STEEL GARAGE DOORS
- LIMITED LIFETIME WARRANTED CERTAINTEED VINYL SIDING
- 30 YEAR ARCHITECTURAL COMPOSITION SHINGLES

UPGRADE OPTIONS

UPGRADE AVAILABILITY IS NOT GUARANTEED. PRICING IS SUBJECT TO CHANGE WITHOUT NOTICE.

- FULL HEIGHT KITCHEN BACKSPLASH \$1,200
TILE FROM THE SELLER'S SELECTION
- QUARTZ SLAB COUNTERTOPS IN KITCHEN \$3,800
QUARTZ FROM THE SELLER'S SELECTION
- STAINLESS STEEL APPLIANCE UPGRADE \$500
RANGE, MICROWAVE, DISHWASHER
- SIDE BY SIDE REFRIGERATOR \$2,500
BLACK
- SIDE BY SIDE REFRIGERATOR \$2,800
STAINLESS STEEL
- TOP LOAD WASHER WITH DRYER \$2,500
- WHITE FAUX WOOD PRIVACY BLINDS \$TBD
PRICE VARIES PER HOMESITE
- GARAGE DOOR OPENER WITH REMOTE \$800
WIFI ENABLED
- EXTERIOR KEYPAD FOR GARAGE DOOR OPENER \$150

