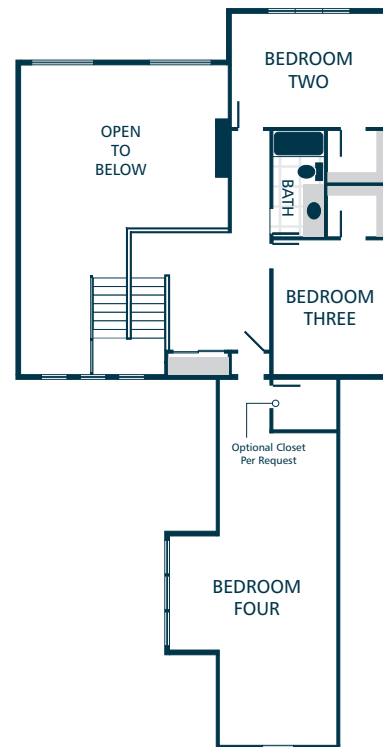


MAIN FLOOR



UPPER FLOOR



KITCHENS

- QUARTZ SLAB COUNTERTOPS WITH MODERN TILE BACKSPLASH
- SHAKER STYLE CABINETS WITH CROWN MOULDING
- STAINLESS STEEL DISHWASHER, BUILT IN MICROWAVE, & PREMIUM SLIDE IN GAS RANGE
- GORGEOUS ENGINEERED HARDWOOD FLOORING
- STYLISH PENDANT LIGHT ACCENTS

LIVING SPACES

- GORGEOUS ENGINEERED HARDWOOD FLOORING AT ENTRY, KITCHEN, DINING, & GREAT ROOM
- GAS FIREPLACE WITH MANTEL & QUARTZ SURROUND
- CONTEMPORARY OPEN RAILING ACCENTS
- VAULTED ENTRY CEILINGS
- LUXURY VINYL TILE FLOORING IN LAUNDRY

EXTERIORS

- PROFESSIONAL FRONT YARD LANDSCAPING
- RUSTIC STONE & STAINED PINE ACCENTS
- BACKYARD PATIO OR COVERED DECK
- 50 YEAR WARRANTED FIBER CEMENT SIDING
- 30 YEAR ARCHITECTURAL COMPOSITION SHINGLES

BATHS

- QUARTZ SLAB COUNTERTOPS, DOUBLE SINKS, TILE FLOORING, TILE SHOWER, & DUAL SHOWERHEAD SYSTEM IN OWNER'S SUITE
- RELAXING LOUNGE TUB IN OWNER'S SUITE
- QUARTZ SLAB COUNTERTOPS WITH TILE BACKSPLASH ON BATHROOM VANITIES
- TILE FLOORING IN MAIN FLOOR BATHROOM
- LUXURY VINYL TILE FLOORING IN BATHROOMS (EXCLUDES OWNER'S SUITE & MAIN FLOOR BATHROOM)

EVERYDAY DETAILS

- EFFICIENT, DUCTLESS MINI SPLIT FOR COOLING/HEATING
- HIGH EFFICIENCY, HEAT PUMP WATER HEATER

UPGRADE OPTIONS

UPGRADE AVAILABILITY IS NOT GUARANTEED.
PRICING IS SUBJECT TO CHANGE WITHOUT NOTICE.

- GARAGE DOOR OPENER WITH REMOTE \$800
WIFI ENABLED
- EXTERIOR KEYPAD FOR GARAGE DOOR OPENER \$150
- TEMPERATURE CONTROLLED FIREPLACE FAN \$800
- WHITE FAUX WOOD PRIVACY BLINDS \$TBD
PRICE VARIES PER HOMESITE
- 6' CEDAR FENCE WITH GATE \$TBD
PRICE VARIES PER HOMESITE
- BACKYARD LANDSCAPING \$TBD
PRICE VARIES PER HOMESITE

