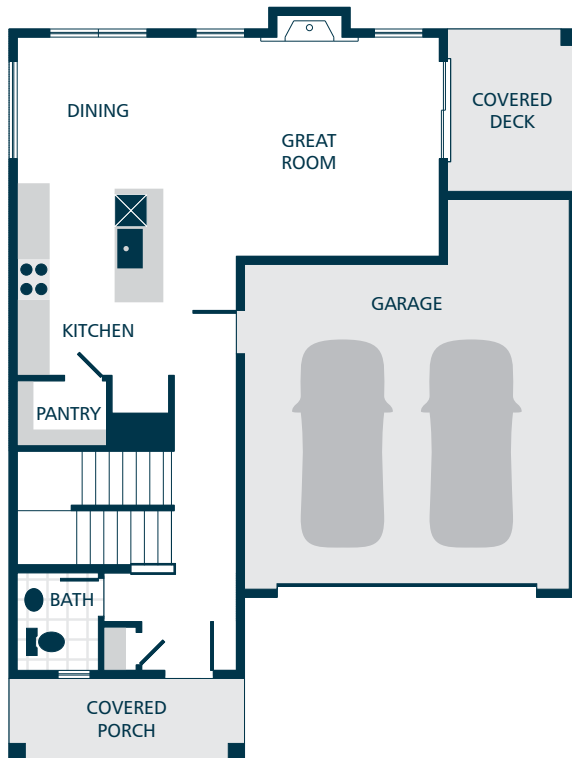
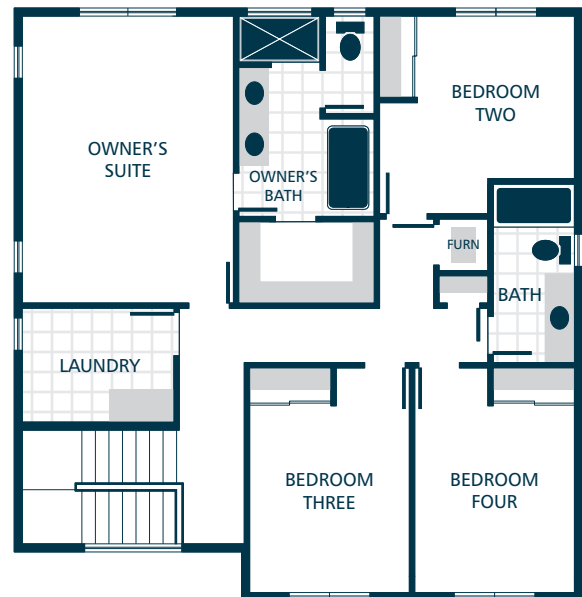


LOWER FLOOR



MAIN FLOOR



UPPER FLOOR



### KITCHENS

- QUARTZ SLAB COUNTERTOPS WITH MODERN TILE BACKSPLASH
- SHAKER STYLE CABINETS WITH CROWN MOULDING
- EFFICIENT, STAINLESS STEEL DISHWASHER, BUILT IN MICROWAVE, & PREMIUM SLIDE IN ELECTRIC RANGE
- GORGEOUS ENGINEERED HARDWOOD FLOORING
- STYLISH PENDANT LIGHT ACCENTS

### LIVING SPACES

- GORGEOUS ENGINEERED HARDWOOD FLOORING AT ENTRY, KITCHEN, DINING, & GREAT ROOM
- ELEGANT FIREPLACE WITH MANTEL & COMPLEMENTARY SURROUND
- CONTEMPORARY OPEN RAILING ACCENTS
- VAULTED CEILING IN OWNER'S SUITE (SELECT HOMES)
- LUXURY VINYL PLANK FLOORING IN LAUNDRY

### EXTERIORS

- PROFESSIONAL LANDSCAPING
- STAINED PINE ACCENTS
- PATIO AND/OR DECK
- 50 YEAR WARRANTED FIBER CEMENT SIDING
- 30 YEAR ARCHITECTURAL COMPOSITION SHINGLES

### BATHS

- QUARTZ SLAB COUNTERTOPS, DOUBLE SINKS, TILE FLOORING, TILE SHOWER, & DUAL SHOWERHEAD SYSTEM IN OWNER'S SUITE
- TILE FLOORING IN MAIN FLOOR BATHROOM
- LUXURY VINYL PLANK FLOORING IN BATHROOMS (EXCLUDES OWNER'S SUITE & MAIN FLOOR BATHROOM)
- RELAXING LOUNGE TUB IN OWNER'S SUITE (SELECT HOMES)

### EVERYDAY DETAILS

- EFFICIENT HEAT PUMP FOR COOLING/HEATING (SUPPLEMENTAL ELECTRIC WALL HEAT ON LOWER LEVEL)
- HIGH EFFICIENCY, HEAT PUMP WATER HEATER

### UPGRADE OPTIONS

UPGRADE AVAILABILITY IS NOT GUARANTEED.  
PRICING IS SUBJECT TO CHANGE WITHOUT NOTICE.

- GARAGE DOOR OPENER WITH REMOTE \$800  
WIFI ENABLED
- EXTERIOR KEYPAD FOR GARAGE DOOR OPENER \$150
- WHITE FAUX WOOD PRIVACY BLINDS \$TBD  
PRICE VARIES PER HOMESITE
- 6' CEDAR FENCE WITH GATE \$TBD  
PRICE VARIES PER HOMESITE

