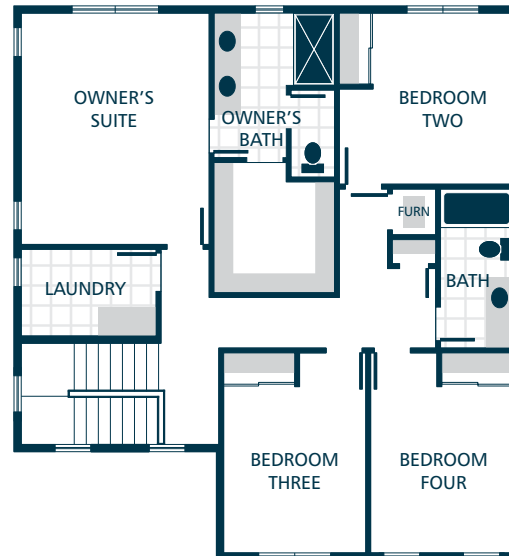


MAIN FLOOR



UPPER FLOOR



KITCHENS

- QUARTZ SLAB COUNTERTOPS WITH MODERN TILE BACKSPLASH
- SHAKER STYLE CABINETS WITH CROWN MOULDING
- EFFICIENT, STAINLESS STEEL DISHWASHER, BUILT IN MICROWAVE, & PREMIUM SLIDE IN ELECTRIC RANGE
- GORGEOUS ENGINEERED HARDWOOD FLOORING
- STYLISH PENDANT LIGHT ACCENTS

LIVING SPACES

- GORGEOUS ENGINEERED HARDWOOD FLOORING AT ENTRY, KITCHEN, DINING, & GREAT ROOM
- ELEGANT FIREPLACE WITH MANTEL & COMPLEMENTARY SURROUND (SELECT HOMES)
- CONTEMPORARY OPEN RAILING ACCENTS (SELECT HOMES)
- VAULTED CEILING IN OWNER'S SUITE (SELECT HOMES)
- LUXURY VINYL PLANK FLOORING IN LAUNDRY

EXTERIORS

- PROFESSIONAL LANDSCAPING
- STAINED PINE ACCENTS
- PATIO AND/OR DECK
- 50 YEAR WARRANTED FIBER CEMENT SIDING
- 30 YEAR ARCHITECTURAL COMPOSITION SHINGLES

BATHS

- QUARTZ SLAB COUNTERTOPS WITH TILE BACKSPLASH ON BATHROOM VANITIES
- TILE FLOORING IN OWNER'S SUITE & MAIN FLOOR BATHROOM
- LUXURY VINYL PLANK FLOORING IN BATHROOMS (EXCLUDES OWNER'S SUITE & MAIN FLOOR BATHROOM)
- DOUBLE SINKS, TILE SHOWER, & DUAL SHOWERHEAD SYSTEM IN OWNER'S SUITE (SELECT HOMES)
- RELAXING LOUNGE TUB IN OWNER'S SUITE (SELECT HOMES)

EVERYDAY DETAILS

- EFFICIENT HEAT PUMP FOR COOLING/HEATING (SUPPLEMENTAL ELECTRIC WALL HEAT ON LOWER LEVEL)
- HIGH EFFICIENCY, HEAT PUMP WATER HEATER

UPGRADE OPTIONS

UPGRADE AVAILABILITY IS NOT GUARANTEED.
PRICING IS SUBJECT TO CHANGE WITHOUT NOTICE.

- GARAGE DOOR OPENER WITH REMOTE **\$800**
WIFI ENABLED
- EXTERIOR KEYPAD FOR GARAGE DOOR OPENER **\$150**
- WHITE FAUX WOOD PRIVACY BLINDS **\$TBD**
PRICE VARIES PER HOMESITE
- 6' CEDAR FENCE WITH GATE **\$TBD**
PRICE VARIES PER HOMESITE

