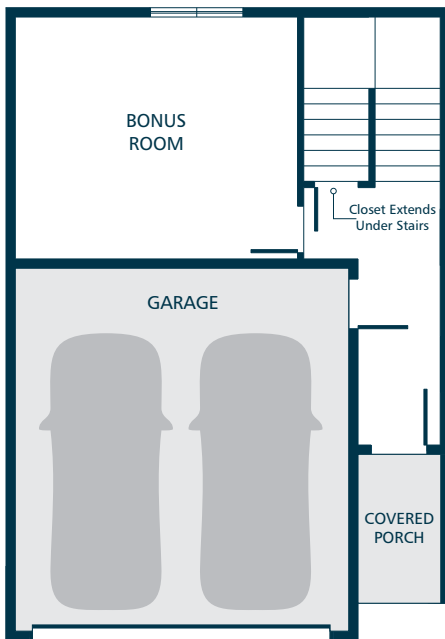
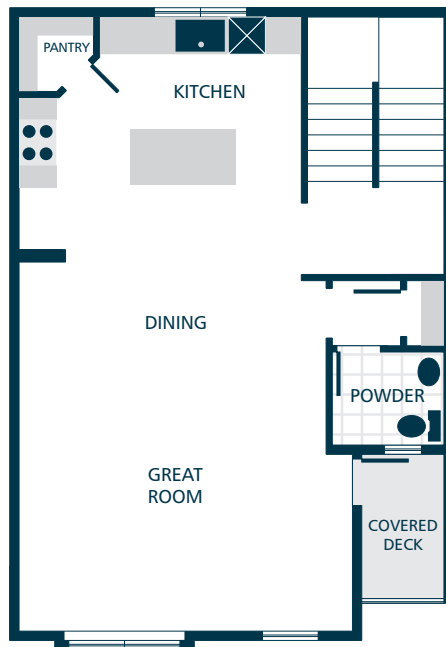




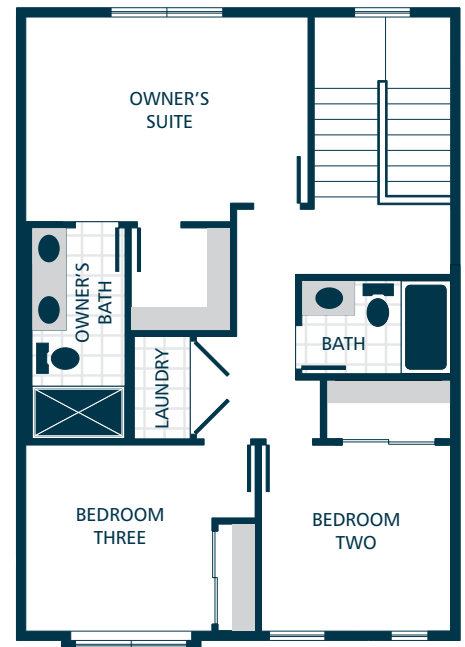
### MIDDLE UNIT - B3



**LOWER**



**MAIN**



**UPPER**

### KITCHENS

- QUARTZ SLAB COUNTERTOPS WITH MODERN TILE BACKSPLASH
- SHAKER STYLE CABINETS WITH CROWN MOULDING
- EFFICIENT, HIGH QUALITY, STAINLESS STEEL DISHWASHER, BUILT IN MICROWAVE, & GAS RANGE
- GORGEOUS LAMINATE HARDWOOD FLOORS
- STYLISH PENDANT LIGHT ACCENTS

### LIVING SPACES

- GORGEOUS LAMINATE HARDWOOD FLOORS AT KITCHEN, DINING, & GREAT ROOM
- STAIN RESISTANT CARPET THROUGHOUT
- LUXURY VINYL PLANK FLOORING IN LAUNDRY
- CONTEMPORARY IRON RAILING ACCENTS

### EXTERIORS

- PROFESSIONAL LANDSCAPING
- STAINED PINE ACCENTS (SELECT HOMES)
- COVERED PORCH AND DECK
- STEEL GARAGE DOORS WITH GLASS ACCENTS
- 50 YEAR WARRANTED FIBER CEMENT SIDING
- 30 YEAR ARCHITECTURAL COMPOSITION SHINGLES

### BATHS

- DOUBLE SINKS, TILE FLOORING, TILE SHOWER, & DUAL SHOWERHEAD SYSTEM IN OWNER'S SUITE
- QUARTZ SLAB COUNTERTOPS WITH TILE BACKSPLASH ON BATHROOM VANITIES (EXCLUDES POWDER)
- LUXURY VINYL PLANK FLOORING IN BATHROOMS (EXCLUDES OWNER'S SUITE)

### EVERYDAY DETAILS

- EFFICIENT HEAT PUMP FOR COOLING/HEATING (SUPPLEMENTAL ELECTRIC WALL HEAT THROUGHOUT)
- NATURAL GAS, TANKLESS HOT WATER HEATER
- PRIVACY BLINDS

### UPGRADE OPTIONS

UPGRADE AVAILABILITY IS NOT GUARANTEED.  
PRICING IS SUBJECT TO CHANGE WITHOUT NOTICE.

- GARAGE DOOR OPENER WITH REMOTE **\$800**  
WIFI ENABLED
- EXTERIOR KEYPAD FOR GARAGE DOOR OPENER **\$150**