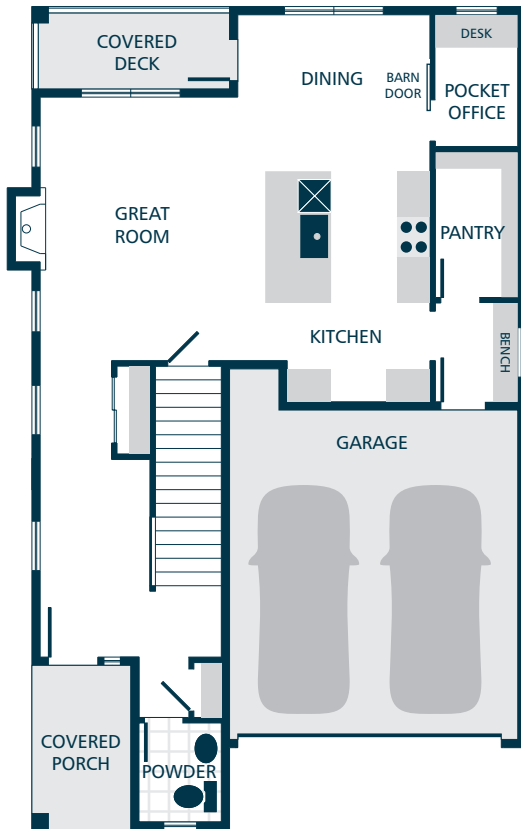
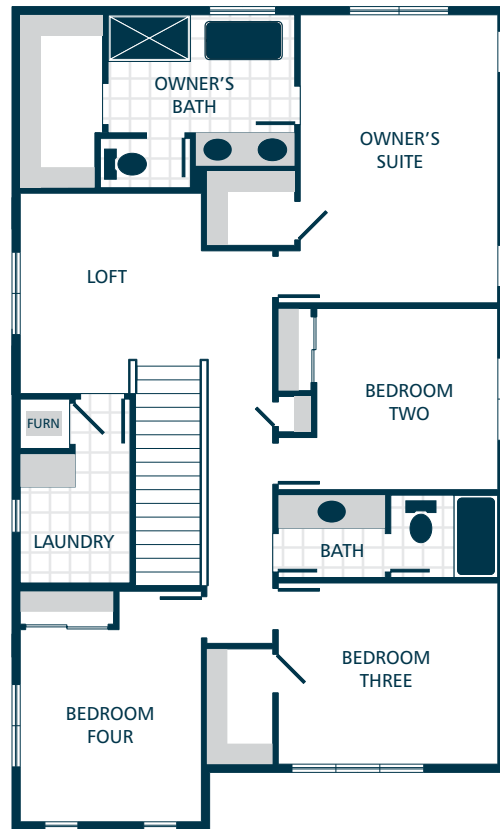


LOWER FLOOR



MAIN FLOOR



UPPER FLOOR

KITCHENS

- QUARTZ SLAB COUNTERTOPS WITH MODERN TILE BACKSPLASH
- SHAKER STYLE CABINETS WITH CROWN MOULDING
- EFFICIENT, HIGH QUALITY, STAINLESS STEEL DISHWASHER, BUILT IN MICROWAVE, & PREMIUM SLIDE IN GAS RANGE
- GORGEOUS ENGINEERED HARDWOOD FLOORS
- STYLISH PENDANT LIGHT ACCENTS

LIVING SPACES

- GORGEOUS ENGINEERED HARDWOOD FLOORS AT KITCHEN, DINING, & GREAT ROOM
- LUXURY VINYL PLANK FLOORING IN LAUNDRY
- GAS FIREPLACE WITH MANTEL & COMPLEMENTARY SURROUND
- CONTEMPORARY IRON RAILING ACCENTS
- CONVENIENT BUILT IN BENCH/DROP ZONE (SELECT HOMES)

EXTERIORS

- PROFESSIONAL LANDSCAPING
- RUSTIC STONE & STAINED PINE ACCENTS
- STEEL GARAGE DOORS WITH GLASS ACCENTS
- 50 YEAR WARRANTED FIBER CEMENT SIDING
- 30 YEAR ARCHITECTURAL COMPOSITION SHINGLES

BATHS

- QUARTZ SLAB COUNTERTOPS, DOUBLE SINKS, TILE FLOOR, TILE SHOWER, & DUAL SHOWERHEAD SYSTEM IN OWNER'S SUITE
- LUXURY VINYL PLANK FLOORING IN BATHROOMS (EXCLUDES OWNER'S SUITE & POWDER)
- SHOWER (SELECT HOMES) & TILE FLOORING IN POWDER
- LUXURIOUS LOUNGE TUB IN OWNER'S SUITE (SELECT HOMES)

EVERYDAY DETAILS

- EFFICIENT HEAT PUMP FOR COOLING/HEATING (SUPPLEMENTAL ELECTRIC WALL HEAT ON LOWER LEVEL)
- HIGH EFFICIENCY, HEAT PUMP WATER HEATER

UPGRADE OPTIONS

UPGRADE AVAILABILITY IS NOT GUARANTEED.
PRICING IS SUBJECT TO CHANGE WITHOUT NOTICE.

- GARAGE DOOR OPENER WITH REMOTE **\$800**
WIFI ENABLED
- EXTERIOR KEYPAD FOR GARAGE DOOR OPENER **\$150**
- TEMPERATURE CONTROLLED FIREPLACE FAN **\$800**
- WHITE FAUX WOOD PRIVACY BLINDS **\$TBD**
PRICE VARIES PER HOMESITE
- 6' CEDAR FENCE WITH GATE **\$TBD**
PRICE VARIES PER HOMESITE DIMENSIONS