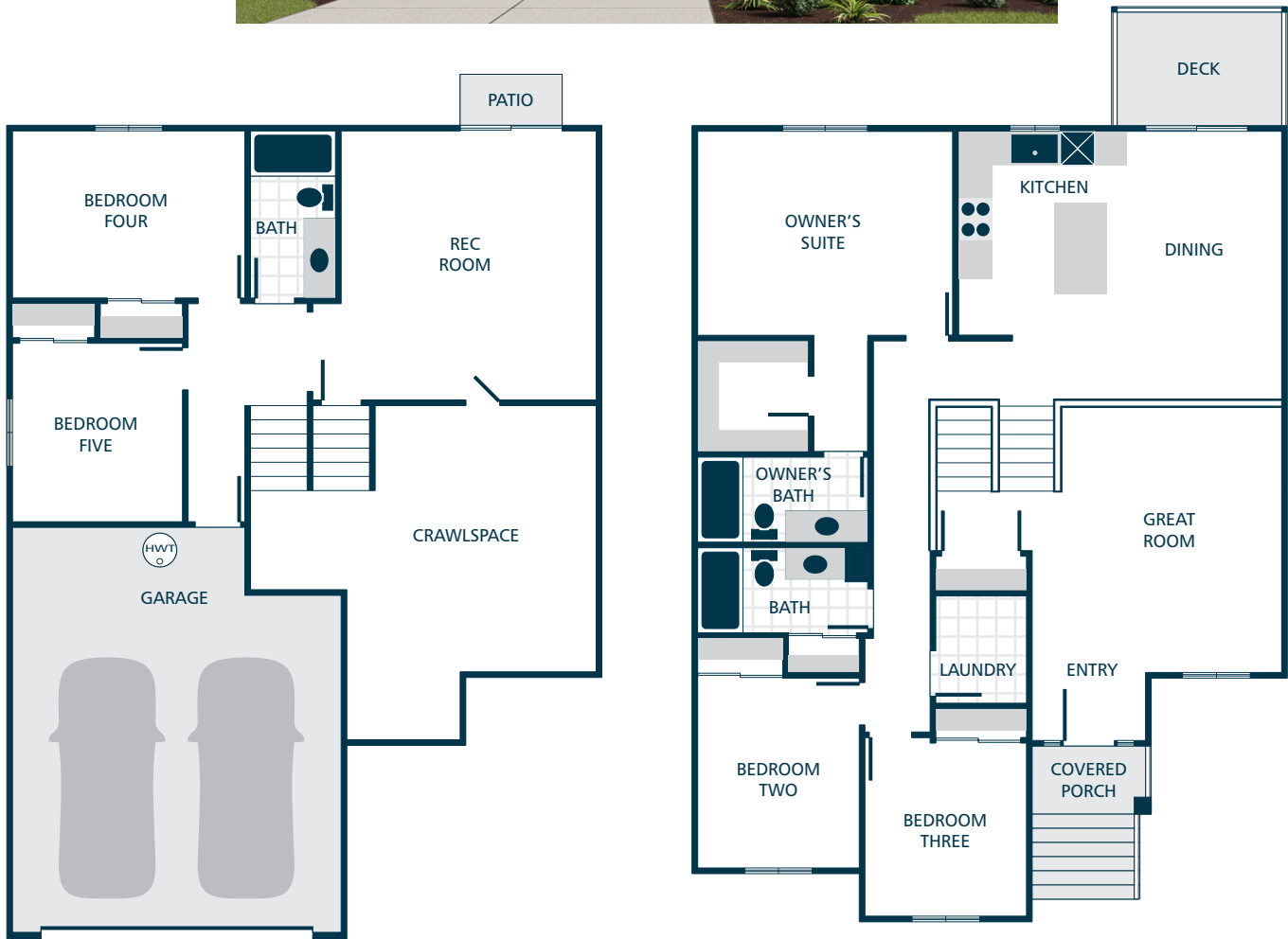




WOODLAND ESTATES

THE PINWOOD

5 | 3 | 2 | 2,104



LOWER FLOOR

MAIN FLOOR

INQUIRIES/SALES TEAM

Info@CornerstoneHomes.com | 208.889.9208

Information presented is for illustrative purposes only, and is subject to change without notice (including, but not limited to, interior/exterior colors, dimensions, pricing, finishes, layout, features, specifications, and status). Due to construction schedules, upgrade availability is not guaranteed.



CORNERSTONE HOMES
CornerstoneHomes.com

KITCHENS

- QUARTZ SLAB COUNTERTOPS WITH MODERN TILE BACKSPLASH
- PREMIUM, SHAKER STYLE CABINETS WITH CROWN MOULDING
- EFFICIENT, HIGH QUALITY, STAINLESS STEEL DISHWASHER, BUILT IN MICROWAVE, & RANGE COOKTOP
- GORGEOUS LAMINATE HARDWOOD FLOORS
- STYLISH PENDANT LIGHT ACCENTS

LIVING SPACES

- GORGEOUS LAMINATE HARDWOOD FLOORS AT ENTRY, KITCHEN, & DINING
- STAIN RESISTANT CARPET THROUGHOUT
- WHITE PAINTED MILLWORK THROUGHOUT
- WHITE PAINTED FIVE PANEL DOORS WITH BLACK HARDWARE
- DURABLE VINYL FLOORING IN LAUNDRY

EVERYDAY DETAILS

- EFFICIENT HEAT PUMP FOR COOLING/HEATING
- HIGH EFFICIENCY, ELECTRIC WATER HEATER

BATHS

- QUARTZ SLAB COUNTERTOPS, TILE BACKSPLASH & DURABLE VINYL FLOORING IN OWNER'S SUITE
- LAMINATE COUNTERTOPS, TILE BACKSPLASH & DURABLE VINYL FLOORING IN BATHROOMS (EXCLUDES OWNER'S SUITE)

EXTERIORS

- PROFESSIONAL LANDSCAPING
- STEEL GARAGE DOORS WITH DECORATIVE ACCENTS
- 50 YEAR WARRANTED FIBER CEMENT SIDING
- 30 YEAR ARCHITECTURAL COMPOSITION SHINGLES

UPGRADE OPTIONS

UPGRADE AVAILABILITY IS NOT GUARANTEED.
PRICING IS SUBJECT TO CHANGE WITHOUT NOTICE.

- GARAGE DOOR OPENER WITH REMOTE \$800
WIFI ENABLED
- EXTERIOR KEYPAD FOR GARAGE DOOR OPENER \$150
- WHITE FAUX WOOD PRIVACY BLINDS \$TBD
PRICE VARIES PER HOMESITE
- 6' CEDAR FENCE WITH GATE \$TBD
PRICE VARIES PER HOMESITE DIMENSIONS