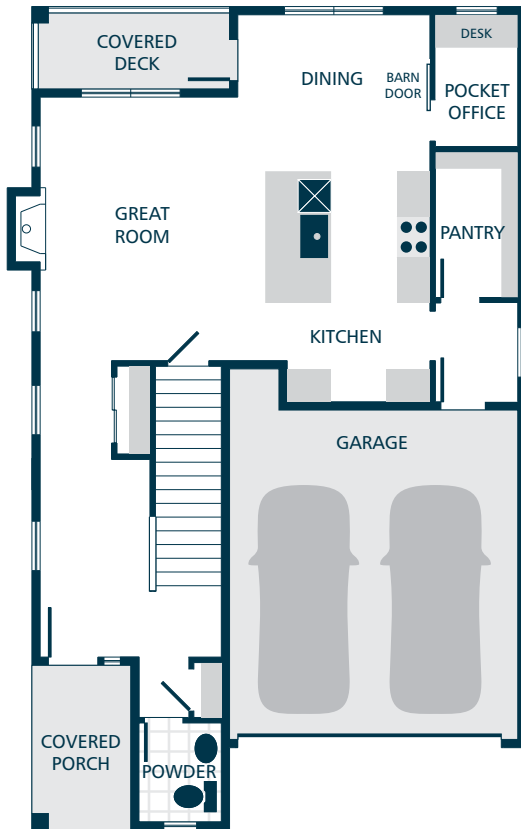
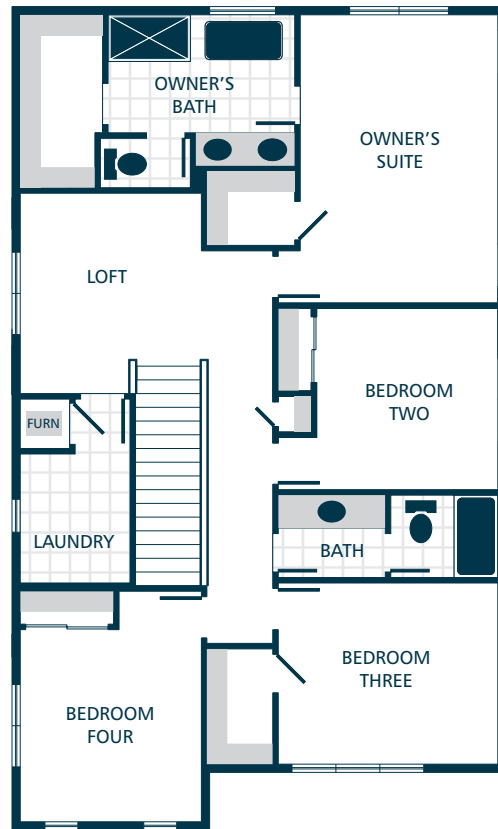


LOWER FLOOR



MAIN FLOOR



UPPER FLOOR



FEATURE HIGHLIGHTS

KITCHENS

- QUARTZ SLAB COUNTERTOPS WITH MODERN TILE BACKSPLASH
- SHAKER STYLE CABINETS WITH CROWN MOULDING
- EFFICIENT, HIGH QUALITY, STAINLESS STEEL DISHWASHER, BUILT IN MICROWAVE, & GAS RANGE
- GORGEOUS ENGINEERED HARDWOOD FLOORS
- STYLISH PENDANT LIGHT ACCENTS

LIVING SPACES

- GORGEOUS ENGINEERED HARDWOOD FLOORS AT KITCHEN, DINING, & GREAT ROOM
- LUXURY VINYL PLANK FLOORING IN LAUNDRY
- GAS FIREPLACE WITH MANTEL

BATHS

- QUARTZ SLAB COUNTERTOPS, DOUBLE SINKS, TILE FLOOR, TILE SHOWER, & DUAL SHOWERHEAD SYSTEM IN OWNER'S SUITE
- LAMINATE COUNTERTOPS, TILE BACKSPLASH & LUXURY VINYL PLANK FLOORING IN BATHROOMS (EXCLUDES OWNER'S SUITE & POWDER)
- SHOWER (SELECT HOMES) & TILE FLOORING IN POWDER
- LUXURIOUS LOUNGE TUB IN OWNER'S SUITE (SELECT HOMES)

EXTERIORS

- PROFESSIONAL LANDSCAPING
- RUSTIC STONE & STAINED PINE ACCENTS
- PATIO AND/OR DECK
- STEEL GARAGE DOORS WITH GLASS ACCENTS
- 50 YEAR WARRANTED FIBER CEMENT SIDING
- 30 YEAR ARCHITECTURAL COMPOSITION SHINGLES

EVERYDAY DETAILS

- EFFICIENT HEAT PUMP FOR COOLING/HEATING (SUPPLEMENTAL ELECTRIC WALL HEAT ON LOWER LEVEL)
- HIGH EFFICIENCY, HEAT PUMP WATER HEATER

UPGRADE OPTIONS

UPGRADE AVAILABILITY IS NOT GUARANTEED.
PRICING IS SUBJECT TO CHANGE WITHOUT NOTICE.

- GARAGE DOOR OPENER WITH REMOTE \$800
WIFI ENABLED
- EXTERIOR KEYPAD FOR GARAGE DOOR OPENER \$150
- TEMPERATURE CONTROLLED FIREPLACE FAN \$800
- WHITE FAUX WOOD PRIVACY BLINDS \$TBD
PRICE VARIES PER HOMESITE
- 6' CEDAR FENCE WITH GATE \$TBD
PRICE VARIES PER HOMESITE DIMENSIONS

INQUIRIES/SALES TEAM

Info@CornerstoneHomes.com | 425.318.3991



Information presented is for illustrative purposes only, and is subject to change without notice (including, but not limited to, interior/exterior colors, dimensions, pricing, finishes, layout, features, specifications, and status). Due to construction schedules, upgrade availability is not guaranteed.



CORNERSTONE HOMES
CornerstoneHomes.com