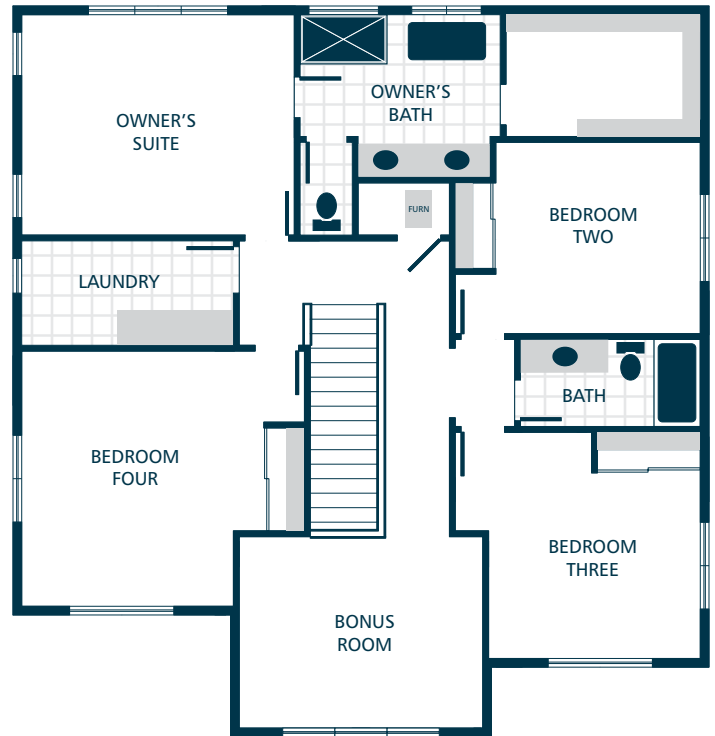


MAIN FLOOR



UPPER FLOOR

## KITCHENS

- QUARTZ SLAB COUNTERTOPS WITH MODERN TILE BACKSPLASH
- PREMIUM, SHAKER STYLE CABINETS WITH CROWN MOULDING
- EFFICIENT, HIGH QUALITY, STAINLESS STEEL DISHWASHER, BUILT IN MICROWAVE, & GAS RANGE
- GORGEOUS ENGINEERED HARDWOOD FLOORS
- STYLISH PENDANT LIGHT ACCENTS

## LIVING SPACES

- GORGEOUS ENGINEERED HARDWOOD FLOORS AT KITCHEN, DINING, & GREAT ROOM
- LUXURY VINYL PLANK FLOORING IN LAUNDRY ROOM
- WHITE PAINTED MILLWORK THROUGHOUT
- WHITE PAINTED FIVE PANEL DOORS WITH BLACK HARDWARE
- GAS FIREPLACE WITH MANTEL & COMPLEMENTARY SURROUND
- CONTEMPORARY IRON RAILING ACCENTS (SELECT HOMES)
- CONVENIENT BUILT IN BENCH AT MUDROOMS

## EVERYDAY DETAILS

- EFFICIENT HEAT PUMP FOR COOLING/HEATING
- HIGH EFFICIENCY, HEAT PUMP WATER HEATER

## BATHS

- QUARTZ SLAB COUNTERTOPS, DOUBLE SINKS, TILE FLOOR, TILE SHOWER, & DUAL SHOWERHEAD SYSTEM IN OWNER'S SUITE
- LUXURY VINYL PLANK FLOORING IN BATHROOMS (EXCLUDES OWNER'S SUITE & POWDER)
- SHOWER (SELECT HOMES) & TILE FLOORING IN POWDER
- LUXURIOUS LOUNGE TUB IN OWNER'S SUITE (SELECT HOMES)

## EXTERIORS

- PROFESSIONAL LANDSCAPING
- RUSTIC STONE & STAINED PINE ACCENTS
- STEEL GARAGE DOORS WITH GLASS ACCENTS
- 50 YEAR WARRANTED FIBER CEMENT SIDING
- 30 YEAR ARCHITECTURAL COMPOSITION SHINGLES

## UPGRADE OPTIONS

UPGRADE AVAILABILITY IS NOT GUARANTEED.  
PRICING IS SUBJECT TO CHANGE WITHOUT NOTICE.

- GARAGE DOOR OPENER WITH REMOTE \$800  
WIFI ENABLED
- EXTERIOR KEYPAD FOR GARAGE DOOR OPENER \$150
- TEMPERATURE CONTROLLED FIREPLACE FAN \$800
- WHITE FAUX WOOD PRIVACY BLINDS \$TBD  
PRICE VARIES PER HOMESITE
- 6' CEDAR FENCE WITH GATE \$TBD  
PRICE VARIES PER HOMESITE DIMENSIONS