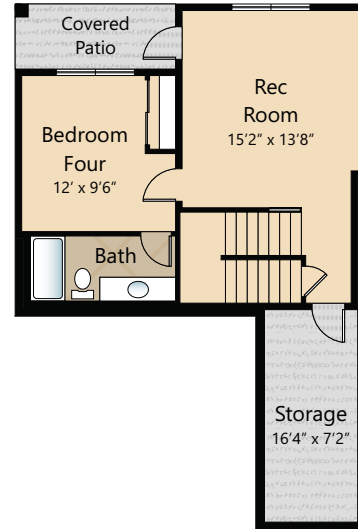


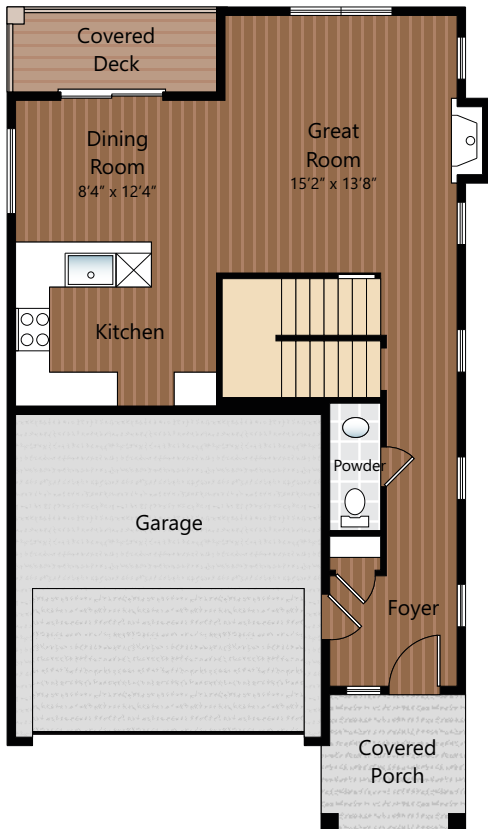
HUDSON *place*

The Ellie

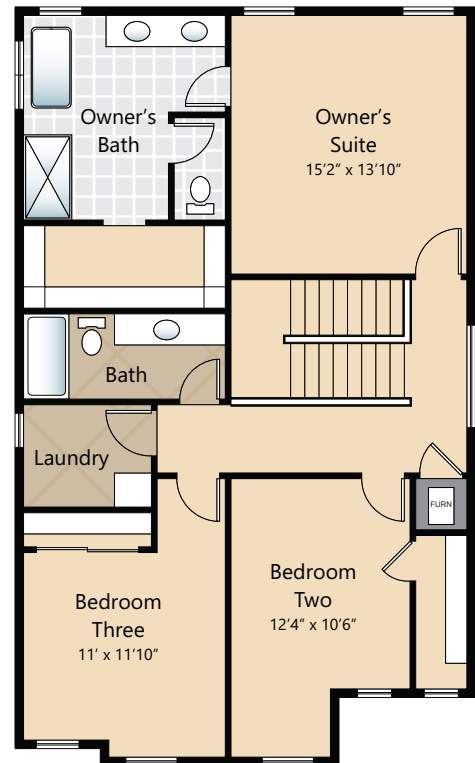
4  | 3.5  | 2  | 2,459  SQ. FT.



LOWER FLOOR



MAIN FLOOR



UPPER FLOOR

Due to construction schedules, upgrade availability is not guaranteed.

All renderings, floorplans, maps, and displays are for illustrative purpose only. Any dimensions and square footages included are approximate and all prices, specifications, terms, and conditions are subject to change without notice.



Kitchens

- QUARTZ SLAB COUNTERTOPS WITH MODERN TILE BACKSPLASH
- PREMIUM, SHAKER STYLE CABINETS WITH CROWN MOULDING
- EFFICIENT, HIGH QUALITY, STAINLESS STEEL DISHWASHER, BUILT IN MICROWAVE, & GAS RANGE
- GORGEOUS ENGINEERED HARDWOOD FLOORS
- ELEGANT, SINGLE BOWL, STAINLESS STEEL KITCHEN SINK WITH GARBAGE DISPOSAL
- HIGH ARC PULL OUT/PULL DOWN KITCHEN FAUCET
- STYLISH PENDANT LIGHT ACCENTS OVER KITCHEN ISLAND
- SLEEK RECESSED LIGHTING & USB CHARGING OUTLET

Living Spaces

- STAIN RESISTANT CARPET THROUGHOUT
- GORGEOUS ENGINEERED HARDWOOD FLOORS AT ENTRY, KITCHEN, DINING & GREAT ROOM
- DURABLE VINYL FLOORING IN LAUNDRY ROOM
- RUBBERMAID WIRE SHELVING SYSTEM IN CLOSETS
- WHITE PAINTED MILLWORK THROUGHOUT
- WHITE PAINTED FIVE PANEL DOORS WITH BLACK HARDWARE
- VAULTED CEILING (SELECT HOMES) & WALK-IN CLOSET IN OWNER'S SUITE
- GAS FIREPLACE WITH MANTEL & COMPLEMENTARY SURROUND
- CONTEMPORARY IRON RAILING ACCENTS (SELECT HOMES)
- 9' HIGH CEILINGS ON MAIN LEVEL (SELECT HOMES)

Baths

- QUARTZ SLAB COUNTERTOPS, TILE BACKSPLASH, DOUBLE SINKS, TILE FLOOR, TILE SHOWER & DUAL SHOWERHEAD SYSTEM IN OWNER'S SUITE
- TILE FLOORING & TILE SHOWER IN POWDER (SELECT HOMES)
- LUXURIOUS FREESTANDING LOUNGE TUB IN OWNER'S SUITE (SELECT HOMES)
- LAMINATE COUNTERTOPS & MODERN TILE BACKSPLASH IN BATHROOMS (EXCLUDES OWNER'S SUITE & POWDER)

Everyday Details

- EFFICIENT HEAT PUMP FOR HEATING/COOLING
- HIGH EFFICIENCY HEAT PUMP WATER HEATER
- SMART PANEL NETWORKING THROUGHOUT
- PRE-INSTALLED CONNECTIONS FOR GARAGE DOOR OPENER & ICE MAKER
- PHONE/CABLE LOCATIONS STANDARD IN ALL BEDROOMS, GREAT ROOM & REC/BONUS/LOFT

Exteriors

- STYLISH FIBERGLASS ENTRY DOOR WITH DECORATIVE DETAILS
- STAINED PINE ACCENTS
- LOW-MAINTENANCE, LIFETIME-WARRANTED WINDOWS WITH SCREENS
- STEEL GARAGE DOORS WITH GLASS ACCENTS
- BACKYARD PATIO AND/OR DECK
- COVERED ENTRY
- FRONT & BACKYARD LANDSCAPING
- 50 YEAR WARRANTED FIBER CEMENT SIDING
- 30 YEAR ARCHITECTURAL COMPOSITION SHINGLES

Upgrade Options

UPGRADE AVAILABILITY IS NOT GUARANTEED.
PRICING IS SUBJECT TO CHANGE WITHOUT NOTICE.

- GARAGE DOOR OPENER WITH REMOTE **\$800**
WIFI ENABLED
- EXTERIOR KEYPAD FOR GARAGE DOOR OPENER **\$150**
- TEMPERATURE CONTROLLED FIREPLACE FAN **\$800**
- WHITE FAUX WOOD PRIVACY BLINDS **\$TBD**
PRICE VARIES PER HOMESITE
- 6' CEDAR FENCE WITH GATE **\$TBD**
PRICE VARIES PER HOMESITE DIMENSIONS

Highlights

- GORGEOUS ENGINEERED HARDWOOD FLOORS
- QUARTZ SLAB COUNTERTOPS WITH MODERN TILE BACKSPLASH IN KITCHEN & OWNER'S SUITE
- TILE SHOWER & DUAL SHOWERHEAD SYSTEM IN OWNER'S SUITE
- STAINED PINE EXTERIOR ACCENTS
- PREMIUM SHAKER CABINETS AND STAINLESS STEEL APPLIANCES IN KITCHEN

FEATURES, SPECIFICATIONS, TERMS, AND CONDITIONS ARE SUBJECT TO CHANGE WITHOUT NOTICE. DUE TO CONSTRUCTION SCHEDULES, UPGRADE AVAILABILITY IS NOT GUARANTEED.