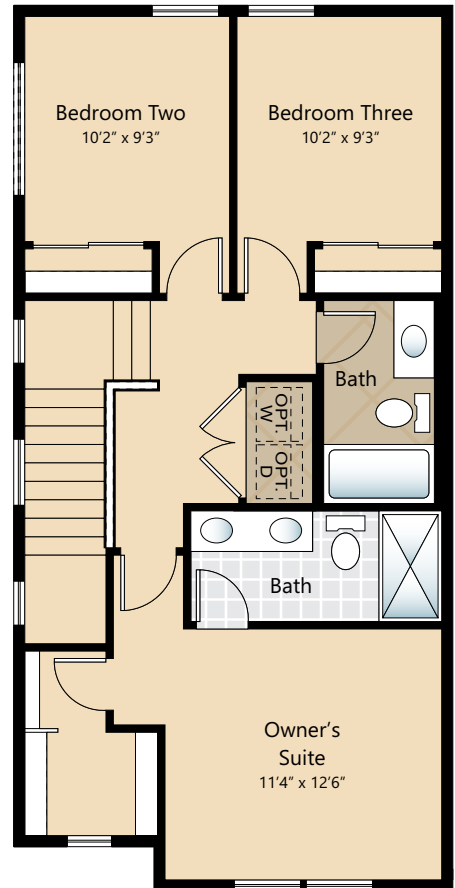
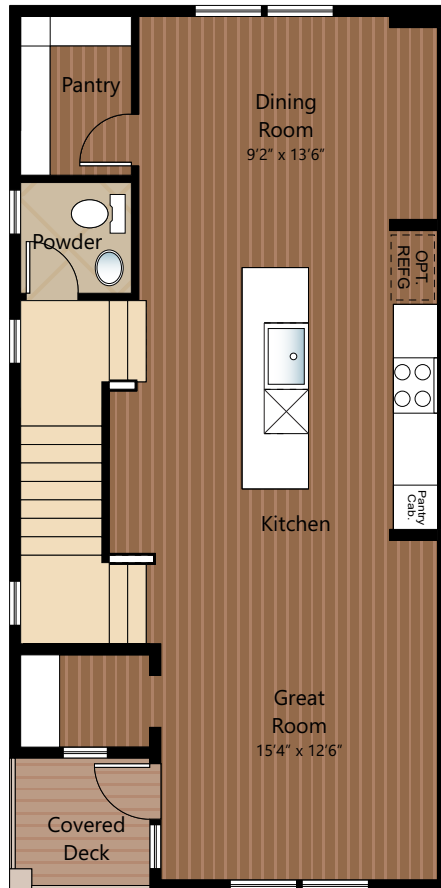
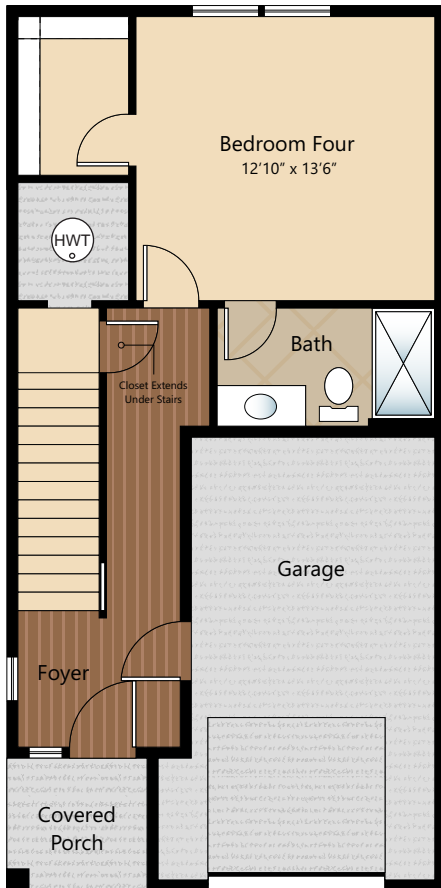




Photographs are for illustrative purposes only. Features, finishes, landscaping and floorplan shown may vary from actual homes built.



Due to construction schedules, upgrade availability is not guaranteed. All renderings, floorplans, maps, and displays are for illustrative purpose only. Any dimensions and square footages included are approximate and all prices, specifications, terms, and conditions are subject to change without notice.



Kitchens

- QUARTZ SLAB COUNTERTOPS WITH MODERN TILE BACKSPLASH
- PREMIUM, SHAKER STYLE CABINETS WITH CROWN MOULDING
- EFFICIENT, HIGH QUALITY, STAINLESS STEEL DISHWASHER, BUILT IN MICROWAVE, & RANGE COOKTOP
- GORGEOUS LAMINATE HARDWOOD FLOORS
- ELEGANT, SINGLE BOWL, STAINLESS STEEL KITCHEN SINK WITH GARBAGE DISPOSAL
- STYLISH, HIGH ARC PULL OUT/PULL DOWN KITCHEN FAUCET
- USB CHARGING OUTLET

Living Spaces

- STAIN RESISTANT CARPET THROUGHOUT
- GORGEOUS LAMINATE HARDWOOD FLOORS AT ENTRY, KITCHEN, DINING & GREAT ROOM
- DURABLE VINYL FLOORING IN LAUNDRY ROOM
- RUBBERMAID WIRE SHELVING SYSTEM IN CLOSETS
- WHITE PAINTED MILLWORK THROUGHOUT
- WHITE PAINTED FIVE PANEL DOORS WITH BLACK HARDWARE
- VAULTED CEILING (SELECT HOMES) & WALK-IN CLOSET IN OWNER'S SUITE
- CONTEMPORARY IRON RAILING ACCENTS (SELECT HOMES)
- 9' HIGH CEILINGS ON MAIN LEVEL

Baths

- QUARTZ SLAB COUNTERTOPS, TILE BACKSPLASH & DURABLE VINYL FLOORING IN BATHROOMS
- QUARTZ SLAB COUNTERTOPS, TILE BACKSPLASH, DOUBLE SINKS & TILE FLOORING IN OWNER'S SUITE
- ELEGANT TILE SHOWER WITH DUAL SHOWERHEAD SYSTEM IN OWNER'S SUITE

Everyday Details

- EFFICIENT DUCTLESS HEAT PUMP FOR COOLING/HEATING WITH ZONED ELECTRIC WALL HEAT THROUGHOUT
- HIGH EFFICIENCY HEAT PUMP WATER HEATER
- WHITE FAUX WOOD PRIVACY BLINDS
- SMART PANEL NETWORKING THROUGHOUT
- PRE-INSTALLED CONNECTIONS FOR GARAGE DOOR OPENER & ICE MAKER
- PHONE/CABLE LOCATIONS STANDARD IN ALL BEDROOMS & GREAT ROOM

Exteriors

- PROFESSIONAL LANDSCAPING
- BRUSHED FINISH EXTERIOR FLATWORK
- STYLISH FIBERGLASS ENTRY DOOR WITH DECORATIVE DETAILS
- LOW-MAINTENANCE, LIFETIME-WARRANTED WINDOWS WITH SCREENS
- STEEL GARAGE DOORS WITH GLASS ACCENTS
- COVERED DECK WITH IRON RAIL ACCENTS (SELECT HOMES)
- COVERED ENTRY
- 25 YEAR WARRANTED FIBER CEMENT SIDING
- 30 YEAR ARCHITECTURAL COMPOSITION SHINGLES

Upgrade Options

UPGRADE AVAILABILITY IS NOT GUARANTEED.
PRICING IS SUBJECT TO CHANGE WITHOUT NOTICE.

- **STAINLESS STEEL SIDE BY SIDE REFRIGERATOR \$2,500**
GE GSS25IYNFS OR SIMILAR
- **STAINLESS STEEL FRENCH DOOR REFRIGERATOR \$3,500**
GE PWE23KYNFS OR SIMILAR
- **WASHER AND DRYER \$1,700**
GE GTW220ACKWW & GE GTX22EASKWW OR SIMILAR
- **GARAGE DOOR OPENER WITH REMOTE \$800**
WIFI ENABLED
- **EXTERIOR KEYPAD FOR GARAGE DOOR OPENER \$150**

Highlights

- GORGEOUS LAMINATE HARDWOOD FLOORS
- QUARTZ SLAB COUNTERTOPS WITH MODERN TILE BACKSPLASH IN KITCHEN & BATHROOMS
- DUAL SHOWERHEAD SYSTEM IN OWNER'S SUITE
- COVERED ENTRY & DECK
- TALL CEILINGS & ABUNDANT NATURAL LIGHT
- WHITE FAUX WOOD PRIVACY BLINDS
- PREMIUM CABINETS AND STAINLESS STEEL APPLIANCES

FEATURES, SPECIFICATIONS, TERMS, AND CONDITIONS ARE SUBJECT TO CHANGE WITHOUT NOTICE. DUE TO CONSTRUCTION SCHEDULES, UPGRADE AVAILABILITY IS NOT GUARANTEED.