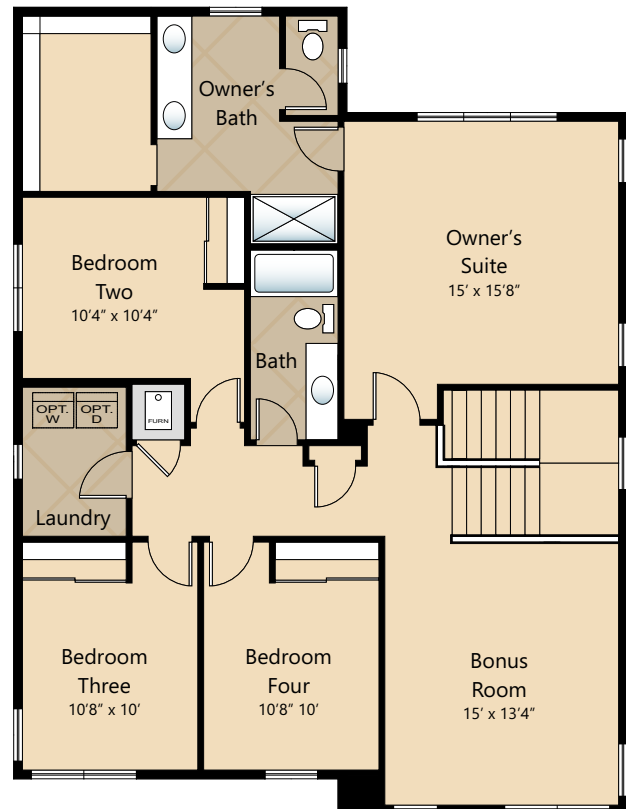


MAIN FLOOR



UPPER FLOOR

Due to construction schedules, upgrade availability is not guaranteed. All renderings, floorplans, maps, and displays are for illustrative purpose only. Any dimensions and square footages included are approximate and all prices, specifications, terms, and conditions are subject to change without notice.



Exteriors

- PROFESSIONALLY LANDSCAPED FRONT YARD
- EXPOSED AGGREGATE EXTERIOR FLATWORK
- PREMIUM FIBERGLASS SIX PANEL ENTRY DOOR WITH BLACK HARDWARE
- RUSTIC STONE & STAINED PINE EXTERIOR ACCENTS
- LOW-MAINTENANCE, LIFETIME-WARRANTED WINDOWS WITH SCREENS
- STEEL GARAGE DOORS WITH GLASS ACCENTS
- BACKYARD PATIO
- COVERED ENTRY
- 25 YEAR WARRANTED FIBER CEMENT SIDING
- 30 YEAR ARCHITECTURAL COMPOSITION SHINGLES

Kitchens

- QUARTZ SLAB COUNTERTOPS WITH MODERN TILE BACKSPLASH
- PREMIUM, SHAKER STYLE CABINETS WITH CROWN MOULDING
- EFFICIENT, HIGH QUALITY, STAINLESS STEEL DISHWASHER, BUILT IN MICROWAVE, & GAS RANGE
- GORGEOUS LAMINATE HARDWOOD FLOORS
- ELEGANT, SINGLE BOWL, STAINLESS STEEL KITCHEN SINK WITH GARBAGE DISPOSAL
- HIGH ARC PULL OUT/PULL DOWN KITCHEN FAUCET
- STYLISH PENDANT LIGHT ACCENTS OVER KITCHEN ISLAND
- USB CHARGING OUTLET

Living Spaces

- STAIN RESISTANT CARPET THROUGHOUT
- GORGEOUS LAMINATE HARDWOOD FLOORS AT ENTRY, KITCHEN, DINING & GREAT ROOM
- DURABLE VINYL FLOORING IN LAUNDRY ROOM & BATHROOMS
- RUBBERMAID WIRE SHELVING SYSTEM IN CLOSETS
- WHITE PAINTED MILLWORK THROUGHOUT
- WHITE PAINTED DOORS WITH BLACK HARDWARE
- VAULTED CEILING (SELECT HOMES) & WALK-IN CLOSET IN OWNER'S SUITE
- COZY GAS FIREPLACE WITH QUARTZ SURROUND
- 9' HIGH CEILINGS ON MAIN FLOOR

Baths

- LAMINATE COUNTERTOPS, TILE BACKSPLASH & DURABLE VINYL FLOORING IN BATHROOMS
- QUARTZ SLAB COUNTERTOPS, TILE BACKSPLASH & DOUBLE SINKS IN OWNER'S SUITE
- FREESTANDING LOUNGE TUB IN OWNER'S SUITE (SELECT HOMES)

Everyday Details

- 95% EFFICIENT GAS FURNACE W/PROGRAMMABLE THERMOSTAT
- NATURAL GAS, TANKLESS HOT WATER HEATER
- SMART PANEL NETWORKING THROUGHOUT
- PRE-INSTALLED CONNECTIONS FOR GARAGE DOOR OPENER & ICE MAKER
- PHONE/CABLE LOCATIONS STANDARD IN ALL BEDROOMS, GREAT ROOM & REC/BONUS/LOFT

Upgrade Options

UPGRADE AVAILABILITY IS NOT GUARANTEED.
PRICING IS SUBJECT TO CHANGE WITHOUT NOTICE.

- **STAINLESS STEEL SIDE BY SIDE REFRIGERATOR \$2,500**
GE GSS25IYNFS OR SIMILAR
- **STAINLESS STEEL FRENCH DOOR REFRIGERATOR \$3,500**
GE PWE23KYNFS OR SIMILAR
- **WASHER AND DRYER \$1,700**
GE GTW220ACKWW & GE GTX22EASKWW OR SIMILAR
- **TEMPERATURE CONTROLLED FIREPLACE FAN \$800**
- **WHITE FAUX WOOD PRIVACY BLINDS \$3,700**
- **AIR CONDITIONING \$8,500**
ONLY AVAILABLE BEFORE FRAMING START
- **6' CEDAR FENCE WITH GATE \$6,500 - \$9,500**
PRICE VARIES PER HOMESITE DIMENSIONS
- **BACKYARD LANDSCAPING \$TBD**
PRICE VARIES PER HOMESITE. PLEASE INQUIRE.
- **GARAGE DOOR OPENER WITH REMOTE \$800**
WIFI ENABLED
- **EXTERIOR KEYPAD FOR GARAGE DOOR OPENER \$150**
- **STYLISH CABINET HARDWARE \$1,000**

Highlights

- GORGEOUS LAMINATE HARDWOOD FLOORS
- QUARTZ SLAB COUNTERTOPS WITH MODERN TILE BACKSPLASH IN KITCHEN & OWNER'S SUITE
- COZY GAS FIREPLACE
- TALL CEILINGS & ABUNDANT NATURAL LIGHT
- PREMIUM CABINETS AND STAINLESS STEEL APPLIANCES
- RUSTIC STONE & STAINED PINE EXTERIOR ACCENTS

FEATURES, SPECIFICATIONS, TERMS, AND CONDITIONS ARE SUBJECT TO CHANGE WITHOUT NOTICE. DUE TO CONSTRUCTION SCHEDULES, UPGRADE AVAILABILITY IS NOT GUARANTEED.