

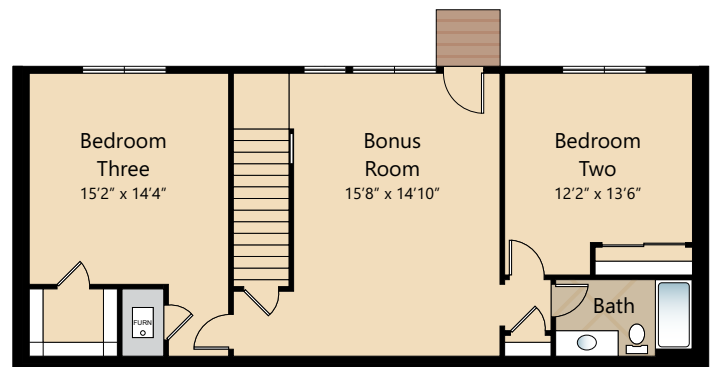
Cavalero Hills

The Elliot // Homesite #46

3  | 2.5  | 2  | 2,547  SQ. FT.



MAIN FLOOR



LOWER FLOOR

Due to construction schedules, upgrade availability is not guaranteed. All renderings, floorplans, maps, and displays are for illustrative purpose only. Any dimensions and square footages included are approximate and all prices, specifications, terms, and conditions are subject to change without notice.



STANDARD

Kitchens

- QUARTZ SLAB COUNTERTOPS WITH MODERN TILE BACKSPLASH
- PREMIUM SHAKER STYLE CABINETS WITH CROWN MOULDING
- EFFICIENT, HIGH QUALITY, STAINLESS STEEL DISHWASHER, BUILT IN MICROWAVE, & RANGE COOKTOP
- GORGEOUS ENGINEERED HARDWOOD FLOORS
- ELEGANT, SINGLE BOWL, STAINLESS STEEL KITCHEN SINK WITH GARBAGE DISPOSAL
- STYLISH, HIGH ARC PULL OUT/PULL DOWN KITCHEN FAUCET
- USB CHARGING OUTLET

Living Spaces

- STAIN RESISTANT CARPET THROUGHOUT
- GORGEOUS ENGINEERED HARDWOOD FLOORS AT ENTRY, KITCHEN, DINING & GREAT ROOM
- DURABLE VINYL FLOORING IN LAUNDRY ROOM
- RUBBERMAID WIRE SHELVING SYSTEM IN CLOSETS
- WHITE PAINTED MILLWORK THROUGHOUT
- WHITE PAINTED FIVE PANEL DOORS WITH BLACK HARDWARE
- VAULTED CEILING (SELECT HOMES) & WALK-IN CLOSET IN OWNER'S SUITE
- COZY FIREPLACE WITH MANTLE & COMPLEMENTARY SURROUND
- CONTEMPORARY IRON RAILING ACCENTS (SELECT HOMES)
- 9' HIGH CEILINGS ON MAIN FLOOR

Baths

- QUARTZ SLAB COUNTERTOPS, TILE BACKSPLASH & DURABLE VINYL FLOORING IN BATHROOMS
- DOUBLE SINKS, TILE FLOORING, TILE SHOWER & DUAL SHOWERHEAD SYSTEM IN OWNER'S SUITE
- LUXURIOUS, FREESTANDING LOUNGE TUB IN OWNER'S SUITE (SELECT HOMES)

Exteriors

- PROFESSIONALLY LANDSCAPED FRONT YARD
- EXPOSED AGGREGATE EXTERIOR FLATWORK
- STYLISH FIBERGLASS ENTRY DOOR WITH DECORATIVE DETAILS
- RUSTIC STONE EXTERIOR ACCENTS
- LOW-MAINTENANCE, LIFETIME-WARRANTED WINDOWS WITH SCREENS
- STEEL GARAGE DOORS WITH GLASS ACCENTS
- CONCRETE PATIO AND/OR DECK
- COVERED ENTRY
- 25 YEAR WARRANTED FIBER CEMENT SIDING
- 30 YEAR ARCHITECTURAL COMPOSITION SHINGLES

Everyday Details

- EFFICIENT HYBRID HEATING SYSTEM FEATURING ELECTRIC HEAT PUMP (FOR HEATING AND COOLING) AND RESERVE PROPANE FURNACE
- PROPANE TANKLESS HOT WATER HEATER
- SMART PANEL NETWORKING THROUGHOUT
- PRE-INSTALLED CONNECTIONS FOR GARAGE DOOR OPENER & ICE MAKER
- PHONE/CABLE LOCATIONS STANDARD IN ALL BEDROOMS, GREAT ROOM & REC/BONUS/LOFT

Highlights

- GORGEOUS ENGINEERED HARDWOOD FLOORS
- QUARTZ SLAB COUNTERTOPS WITH MODERN TILE BACKSPLASH IN KITCHEN & BATHROOMS
- INVITING OUTDOOR LIVING SPACES
- RUSTIC STONE EXTERIOR ACCENTS
- PREMIUM CABINETS AND STAINLESS STEEL APPLIANCES IN KITCHEN

UPGRADE OPTIONS

Interior Selections

- APPLIANCES
 - PREMIUM STAINLESS STEEL SIDE BY SIDE REFRIGERATOR
 - WASHER AND DRYER
 - FIREPLACE FAN
- WINDOW COVERINGS
- ADDITIONAL CABLE OR PHONE JACKS PRIOR TO ELEC. R-I (PER BID AFTER R-I)

Exterior Selections

- GARAGE DOOR OPENER WITH REMOTE
- EXTERIOR KEYPAD FOR GARAGE DOOR OPENER
- 6' CEDAR FENCE
- 6' CEDAR GATE

FOR PRICING ON LISTED UPGRADE OPTIONS,
PLEASE CONTACT OUR LISTING AGENT.

FEATURES, SPECIFICATIONS, TERMS, AND CONDITIONS ARE SUBJECT TO CHANGE WITHOUT NOTICE. DUE TO CONSTRUCTION SCHEDULES, UPGRADE AVAILABILITY IS NOT GUARANTEED.