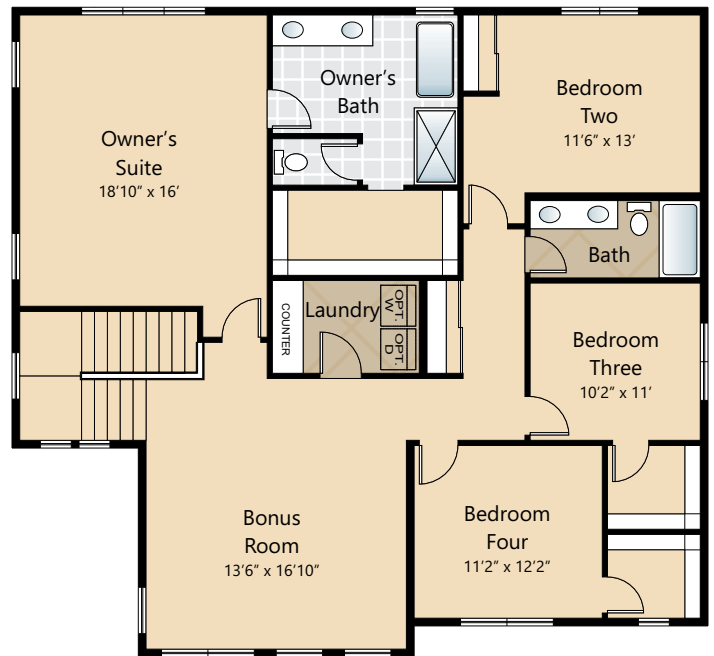




Photographs are for illustrative purposes only. Features, finishes, interior/exterior colors, landscaping and floorplan shown may vary from actual homes built.



### MAIN FLOOR



### UPPER FLOOR

Due to construction schedules, upgrade availability is not guaranteed.

All renderings, floorplans, maps, and displays are for illustrative purpose only. Any dimensions and square footages included are approximate and all prices, specifications, terms, and conditions are subject to change without notice.



## STANDARD

### Kitchens

- QUARTZ SLAB COUNTERTOPS WITH MODERN TILE BACKSPLASH
- PREMIUM, SOFT CLOSE SHAKER STYLE CABINETS WITH CROWN MOULDING
- EFFICIENT, HIGH QUALITY, GE STAINLESS STEEL DISHWASHER, BUILT IN MICROWAVE, & GAS RANGE
- GORGEOUS ENGINEERED HARDWOOD FLOORS
- ELEGANT, SINGLE BOWL, STAINLESS-STEEL KITCHEN SINK WITH GARBAGE DISPOSAL
- STYLISH, HIGH ARC PULL OUT/PULL DOWN KITCHEN FAUCET
- USB CHARGING OUTLET

### Living Spaces

- STAIN RESISTANT CARPET THROUGHOUT
- GORGEOUS ENGINEERED HARDWOOD FLOORS AT ENTRY, KITCHEN, DINING & GREAT ROOM
- DURABLE VINYL FLOORING IN LAUNDRY ROOM
- RUBBERMAID WIRE SHELVING SYSTEM IN CLOSETS
- WHITE PAINTED MILLWORK THROUGHOUT
- WHITE PAINTED FIVE PANEL DOORS WITH BLACK HARDWARE
- VAULTED CEILING (SELECT HOMES) & WALK-IN CLOSET IN OWNER'S SUITE
- GAS FIREPLACE WITH MANTLE & COMPLEMENTARY SURROUND
- CONTEMPORARY IRON RAILING ACCENTS (SELECT HOMES)
- 9' HIGH CEILINGS ON MAIN FLOOR (SELECT HOMES)

### Baths

- QUARTZ SLAB COUNTERTOPS, TILE BACKSPLASH & DURABLE VINYL FLOORING IN BATHROOMS
- DOUBLE SINKS, TILE FLOORING, TILE SHOWER & DUAL SHOWERHEAD SYSTEM IN OWNER'S SUITE
- LUXURIOUS, FREESTANDING LOUNGE TUB IN OWNER'S SUITE (SELECT HOMES)

### Exteriors

- PROFESSIONAL LANDSCAPING
- EXPOSED AGGREGATE EXTERIOR FLATWORK
- STYLISH FIBERGLASS ENTRY DOOR WITH DECORATIVE DETAILS
- RUSTIC STONE & STAINED PINE ACCENTS
- LOW-MAINTENANCE, LIFETIME-WARRANTED WINDOWS WITH SCREENS
- STEEL GARAGE DOORS WITH GLASS ACCENTS
- CONCRETE PATIO AND/OR DECK
- COVERED ENTRY (SELECT HOMES)
- 25 YEAR WARRANTED FIBER CEMENT SIDING
- 30 YEAR ARCHITECTURAL COMPOSITION SHINGLES

### Everyday Details

- 95% EFFICIENT GAS FURNACE W/PROGRAMMABLE THERMOSTAT (3 STORY HOMES WILL HAVE ELECTRIC WALL HEAT ON LOWER FLOOR)
- NATURAL GAS, TANKLESS HOT WATER HEATER
- SMART PANEL NETWORKING THROUGHOUT
- PRE-INSTALLED CONNECTIONS FOR GARAGE DOOR OPENER & ICE MAKER
- PHONE/CABLE LOCATIONS STANDARD IN ALL BEDROOMS, GREAT ROOM & REC/BONUS/LOFT

## Highlights

- GORGEOUS ENGINEERED HARDWOOD FLOORS
- QUARTZ SLAB COUNTERTOPS WITH MODERN TILE BACKSPLASH IN KITCHEN & BATHROOMS
- INVITING OUTDOOR LIVING SPACES
- RUSTIC STONE & STAINED PINE EXTERIOR ACCENTS
- PREMIUM, SOFT CLOSE CABINETS AND STAINLESS STEEL APPLIANCES IN KITCHEN

## UPGRADE OPTIONS

### Interior Selections

- APPLIANCES
  - PREMIUM STAINLESS STEEL SIDE BY SIDE REFRIGERATOR
  - GE WASHER AND DRYER
  - GAS FIREPLACE FAN
- WINDOW COVERINGS
- ADDITIONAL CABLE OR PHONE JACKS PRIOR TO ELEC. R-I (PER BID AFTER R-I)

### Exterior Selections

- GARAGE DOOR OPENER WITH REMOTE
- EXTERIOR KEYPAD FOR GARAGE DOOR OPENER
- 6' CEDAR FENCE
- 6' CEDAR GATE

FOR PRICING ON LISTED UPGRADE OPTIONS, PLEASE CONTACT OUR LISTING AGENT.

FEATURES, SPECIFICATIONS, TERMS, AND CONDITIONS ARE SUBJECT TO CHANGE WITHOUT NOTICE. DUE TO CONSTRUCTION SCHEDULES, UPGRADE AVAILABILITY IS NOT GUARANTEED.