


THE EMERSON

4+ 

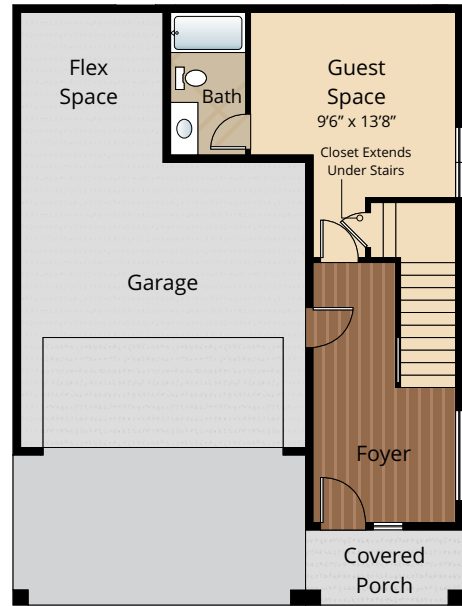
3.25 

2 

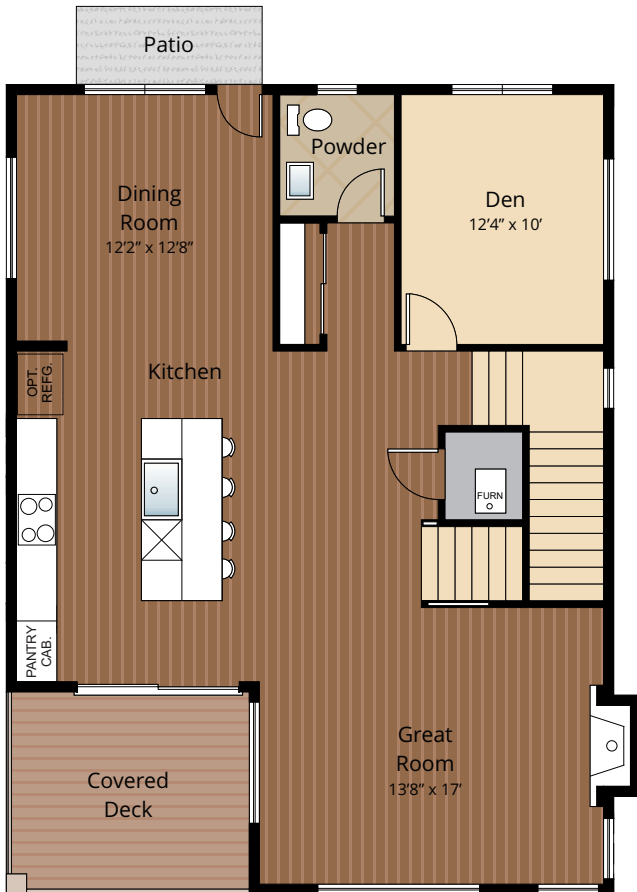
2,646  SQ. FT.



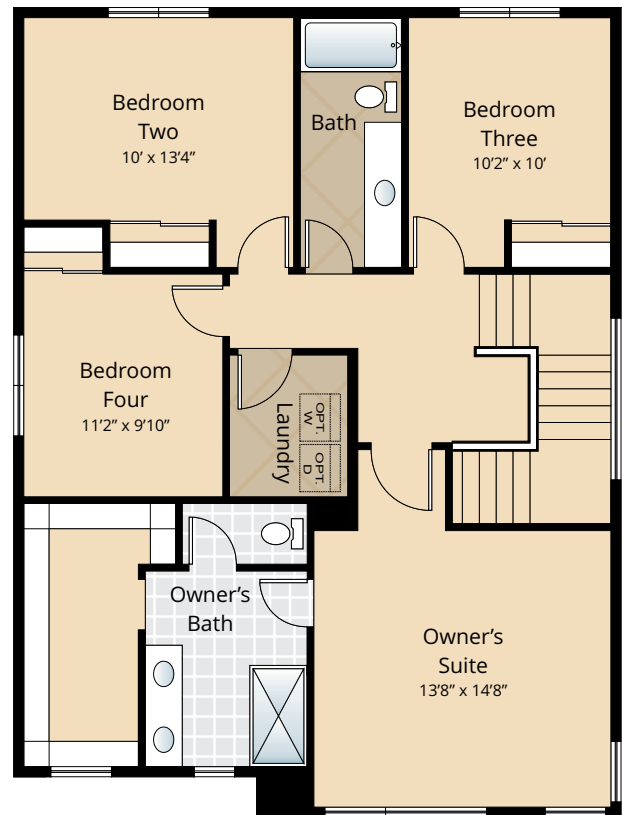
Photographs are for illustrative purposes only. Features, finishes, landscaping and floorplan shown may vary from actual homes built.



LOWER FLOOR



MAIN FLOOR



UPPER FLOOR

Due to construction schedules, upgrade availability is not guaranteed. All renderings, floorplans, maps, and displays are for illustrative purpose only. Any dimensions and square footages included are approximate and all prices, specifications, terms, and conditions are subject to change without notice.

### STANDARD

#### Kitchens

- QUARTZ SLAB COUNTERTOPS WITH MODERN TILE BACKSPLASH
- PREMIUM WOOD STAINED CABINETS WITH CROWN MOLDING
- EFFICIENT, HIGH QUALITY, GE STAINLESS STEEL DISHWASHER, BUILT IN MICROWAVE, & GAS RANGE
- GORGEOUS ENGINEERED HARDWOOD FLOORS
- ELEGANT, SINGLE BOWL, STAINLESS-STEEL KITCHEN SINK WITH GARBAGE DISPOSAL
- STYLISH, HIGH ARC PULL OUT/PULL DOWN KITCHEN FAUCET
- SLEEK RECESSED LIGHTING
- USB CHARGING OUTLET

#### Living Spaces

- STAIN RESISTANT CARPET THROUGHOUT
- DURABLE VINYL FLOORING IN LAUNDRY ROOM
- GORGEOUS ENGINEERED HARDWOOD FLOORS AT ENTRY, KITCHEN GREAT ROOM & DINING
- RUBBERMAID WIRE SHELVING SYSTEM IN CLOSETS
- WHITE PAINTED MILLWORK THROUGHOUT
- WHITE PAINTED FIVE PANEL DOORS WITH BLACK HARDWARE
- VAULTED CEILING (SELECT HOMES) & WALK-IN CLOSET IN OWNER'S SUITE
- GAS FIREPLACE WITH MANTLE & COMPLEMENTARY SURROUND
- CONTEMPORARY IRON RAILING ACCENTS (SELECT HOMES)
- 9' HIGH CEILINGS ON MAIN FLOOR

#### Baths

- QUARTZ SLAB COUNTERTOPS, MODERN TILE BACKSPLASH, DOUBLE SINKS, & BEAUTIFUL TILE FLOORING IN OWNER'S SUITE
- ELEGANT TILE SHOWER W/FIBERGLASS PAN IN OWNER'S SUITE
- LAMINATE COUNTERTOPS & LOW MAINTENANCE VINYL FLOORING IN UPPER & LOWER FLOOR MAIN BATHROOMS (SELECT HOMES)

#### Exteriors

- PROFESSIONAL LANDSCAPING
- BRUSHED EXTERIOR FLATWORK
- STYLISH FIBERGLASS ENTRY DOOR
- LOW-MAINTENANCE, LIFETIME-WARRANTED WINDOWS WITH SCREENS
- STEEL GARAGE DOORS WITH GLASS ACCENTS
- BACK CONCRETE PATIO AND/OR DECK (SELECT HOMES)
- COVERED ENTRY (SELECT HOMES)
- 25 YEAR WARRANTED FIBER CEMENT SIDING
- 30 YEAR ARCHITECTURAL COMPOSITION SHINGLES

#### Everyday Details

- 95% EFFICIENT GAS FURNACE W/PROGRAMMABLE THERMOSTAT (3 STORY HOMES WILL HAVE ELECTRIC WALL HEAT ON LOWER LEVEL)
- NATURAL GAS, TANKLESS HOT WATER HEATER
- SMART PANEL NETWORKING THROUGHOUT
- PRE-INSTALLED CONNECTIONS FOR GARAGE DOOR OPENER & ICE MAKER

### Highlights

- GORGEOUS ENGINEERED HARDWOOD FLOORS
- QUARTZ SLAB COUNTERTOPS WITH MODERN TILE BACKSPLASH IN KITCHEN & OWNER'S SUITE
- INVITING OUTDOOR LIVING SPACES
- PREMIUM CABINETS AND STAINLESS STEEL APPLIANCES IN KITCHEN
- WHITE PAINTED MILLWORK THROUGHOUT

### UPGRADE OPTIONS

#### Interior Selections

- APPLIANCES
  - PREMIUM STAINLESS STEEL SIDE BY SIDE REFRIGERATOR
  - GE WASHER AND DRYER
  - GAS FIREPLACE FAN
- WINDOW COVERINGS
- ADDITIONAL CABLE OR PHONE JACKS PRIOR TO ELEC. R-I (PER BID AFTER R-I)

#### Exterior Selections

- GARAGE DOOR OPENER WITH REMOTE
- EXTERIOR KEYPAD FOR GARAGE DOOR OPENER
- 6' CEDAR FENCE
- 6' CEDAR GATE

FOR PRICING ON LISTED UPGRADE OPTIONS, PLEASE CONTACT OUR LISTING AGENT.

FEATURES, SPECIFICATIONS, TERMS, AND CONDITIONS ARE SUBJECT TO CHANGE WITHOUT NOTICE. DUE TO CONSTRUCTION SCHEDULES, UPGRADE AVAILABILITY IS NOT GUARANTEED.