

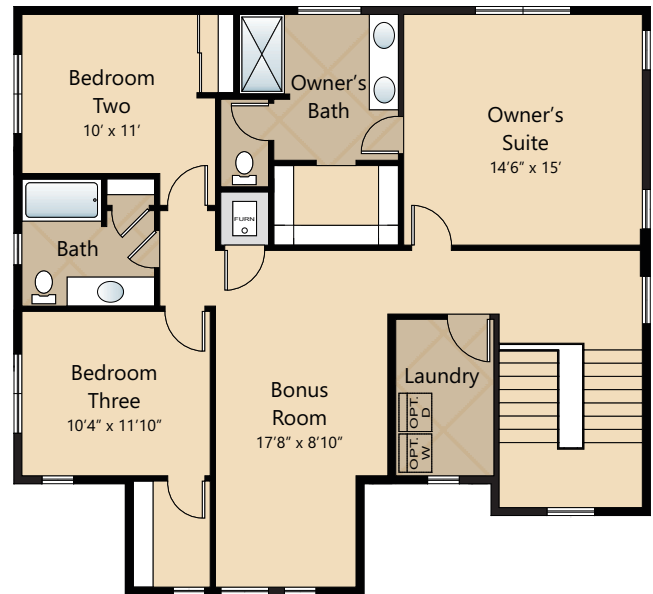
THE HAWTHORN

4 

3.5 

2 

2,685 



Due to construction schedules, upgrade availability is not guaranteed. All renderings, floorplans, maps, and displays are for illustrative purpose only. Any dimensions and square footages included are approximate and all prices, specifications, terms, and conditions are subject to change without notice.

STANDARD

Kitchens

- QUARTZ SLAB COUNTERTOPS WITH MODERN TILE BACKSPLASH
- PREMIUM SHAKER STYLE CABINETS WITH CROWN MOULDING
- EFFICIENT, HIGH QUALITY, GE STAINLESS STEEL DISHWASHER, BUILT IN MICROWAVE, & GAS RANGE
- GORGEOUS ENGINEERED HARDWOOD FLOORS
- ELEGANT, SINGLE BOWL, STAINLESS STEEL KITCHEN SINK WITH GARBAGE DISPOSAL
- STYLISH, HIGH ARC KITCHEN FAUCET
- SLEEK RECESSED LIGHTING
- USB CHARGING OUTLET

Living Spaces

- STAIN RESISTANT CARPET THROUGHOUT
- GORGEOUS ENGINEERED HARDWOOD FLOORS AT ENTRY, KITCHEN, DINING & GREAT ROOM
- DURABLE VINYL FLOORING IN LAUNDRY & BATHROOMS
- RUBBERMAID WIRE SHELVING SYSTEM IN CLOSETS
- WHITE PAINTED MILLWORK THROUGHOUT
- WHITE PAINTED DOORS WITH BLACK HARDWARE
- VAULTED CEILING & WALK-IN CLOSET IN OWNER'S SUITE (SELECT HOMES)
- GAS FIREPLACE WITH MANTLE & COMPLEMENTARY SURROUND
- 9' HIGH CEILINGS ON MAIN FLOOR

Baths

- QUARTZ SLAB COUNTERTOPS, MODERN TILE BACKSPLASH, & DOUBLE SINKS IN OWNER'S SUITE
- DESIGNER, LAMINATE COUNTERTOPS WITH TILE BACKSPLASH IN MAIN BATHROOM
- BEAUTIFUL, LOW MAINTENANCE VINYL FLOORING

Exteriors

- PROFESSIONAL LANDSCAPING
- EXPOSED AGGREGATE EXTERIOR FLATWORK
- STYLISH FIBERGLASS ENTRY DOOR WITH DECORATIVE DETAILS
- LOW-MAINTENANCE, LIFETIME-WARRANTED WINDOWS WITH SCREENS
- STEEL GARAGE DOORS WITH GLASS ACCENTS
- BACK CONCRETE PATIO AND/OR DECK (SELECT HOMES)
- COVERED ENTRY (SELECT HOMES)
- 25 YEAR WARRANTED FIBER CEMENT SIDING
- 30 YEAR ARCHITECTURAL COMPOSITION SHINGLES

Everyday Details

- 95% EFFICIENT GAS FURNACE W/PROGRAMMABLE THERMOSTAT
- NATURAL GAS, TANKLESS HOT WATER HEATER
- SMART PANEL NETWORKING THROUGHOUT
- MINI REFRIGERATOR INSTALLED IN GUEST GREAT ROOM (HAWTHORN MODEL ONLY - 2,685 SQFT)
- PRE-INSTALLED CONNECTIONS FOR GARAGE DOOR OPENER & ICE MAKER

Highlights

- GORGEOUS ENGINEERED HARDWOOD FLOORS
- QUARTZ SLAB COUNTERTOPS WITH MODERN TILE BACKSPLASH IN KITCHEN & OWNER'S SUITE
- INVITING OUTDOOR LIVING SPACES
- PREMIUM CABINETS AND STAINLESS STEEL APPLIANCES IN KITCHEN
- WHITE PAINTED MILLWORK THROUGHOUT

UPGRADE OPTIONS

Interior Selections

- APPLIANCES
 - PREMIUM STAINLESS STEEL SIDE BY SIDE REFRIGERATOR
 - GE WASHER AND DRYER
 - GAS FIREPLACE FAN
- WINDOW COVERINGS
- ADDITIONAL CABLE OR PHONE JACKS PRIOR TO ELEC. R-I (PER BID AFTER R-I)

Exterior Selections

- GARAGE DOOR OPENER WITH REMOTE
- EXTERIOR KEYPAD FOR GARAGE DOOR OPENER
- 6' CEDAR FENCE
- 6' CEDAR GATE

FOR PRICING ON LISTED UPGRADE OPTIONS,
PLEASE CONTACT OUR LISTING AGENT.

FEATURES, SPECIFICATIONS, TERMS, AND CONDITIONS ARE SUBJECT TO CHANGE WITHOUT NOTICE. DUE TO CONSTRUCTION SCHEDULES, UPGRADE AVAILABILITY IS NOT GUARANTEED.