

THE SARATOGA

4 

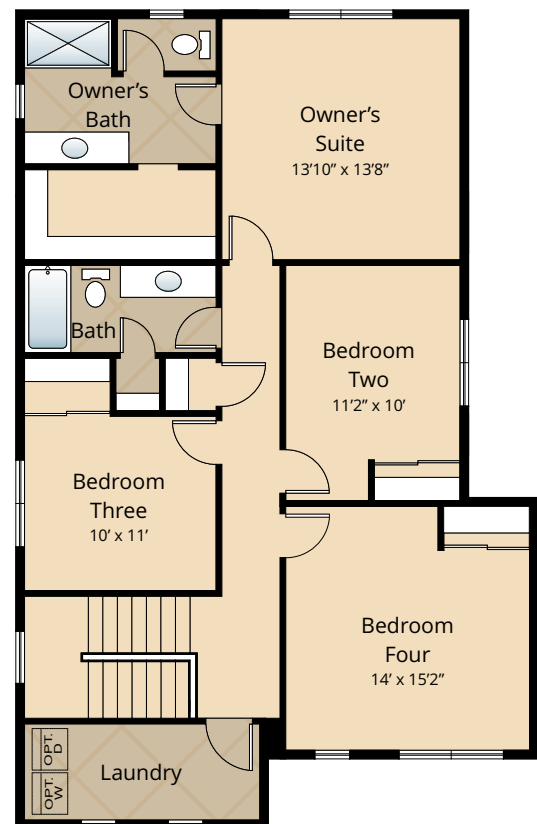
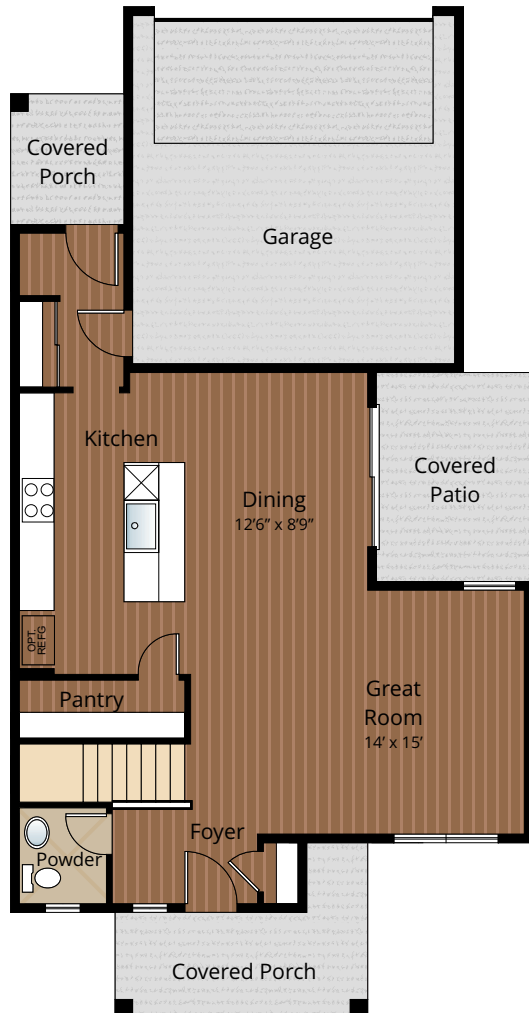
2.25 

2 

2,002  SQ. FT.



Photographs are for illustrative purposes only. Features, finishes, interior/exterior colors, landscaping and materials shown may vary from actual homes built.



Due to construction schedules, upgrade availability is not guaranteed.

All renderings, floorplans, maps, and displays are for illustrative purpose only. Any dimensions and square footages included are approximate and all prices, specifications, terms, and conditions are subject to change without notice.



**Windermere**

Ebrima Wadda  
Windermere Real Estate/M2, LLC  
ebrima@windermere.com • 425-921-1465



**CORNERSTONE HOMES**  
CornerstoneHomes.com



### STANDARD

#### Kitchens

- QUARTZ SLAB COUNTERTOPS WITH QUARTZ BACKSPLASH
- DESIGNER BIRCH CABINETS
- GORGEOUS LAMINATE HARDWOOD FLOORS
- EFFICIENT, HIGH QUALITY, GE BLACK DISHWASHER, BUILT-IN-MICROWAVE, & GAS RANGE
- STAINLESS-STEEL KITCHEN SINK WITH GARBAGE DISPOSAL
- DURABLE WIRE SHELVEING IN PANTRY (SELECT HOMES)

#### Living Spaces

- STAIN RESISTANT CARPET THROUGHOUT
- DURABLE, EASY MAINTENANCE VINYL FLOORING IN LAUNDRY ROOM AND BATHROOMS
- GORGEOUS LAMINATE HARDWOOD FLOORS AT ENTRY, KITCHEN, DINING & GREAT ROOM
- RUBBERMAID WIRE SHELVEING SYSTEM IN CLOSETS
- WHITE PAINTED MILLWORK THROUGHOUT
- WHITE PAINTED TWO PANEL DOORS WITH BRUSHED CHROME HARDWARE
- VAULTED CEILINGS AND WALK-IN CLOSET IN OWNER'S SUITE (SELECT HOMES)
- TALL CEILINGS ON MAIN FLOOR

#### Baths

- DISTINCTIVE CHROME FAUCET WITH LEVER HANDLES IN ALL BATHROOMS
- DESIGNER, LAMINATE COUNTERTOPS WITH TILE BACKSPLASH ON ALL BATHROOM VANITIES
- BEAUTIFUL, LOW MAINTENANCE VINYL FLOORING

#### Exteriors

- PROFESSIONAL LANDSCAPING
- PREMIUM FIBERGLASS SIX PANEL ENTRY DOOR WITH SILVER HARDWARE
- EXPOSED AGGREGATE EXTERIOR FLATWORK
- LOW-MAINTENANCE, LIFETIME-WARRANTED WINDOWS WITH SCREENS
- STEEL GARAGE DOORS WITH RECESSED PANELS
- BACK CONCRETE PATIO AND/OR DECK (SELECT HOMES)
- COVERED ENTRY (SELECT HOMES)
- 25 YEAR WARRANTED FIBER CEMENT SIDING
- 30 YEAR ARCHITECTURAL COMPOSITION SHINGLES

#### Everyday Details

- EFFICIENT DUCTLESS HEAT PUMP WITH ZONED ELECTRIC HEAT
- NATURAL GAS, TANKLESS HOT WATER HEATER
- CABLE LOCATIONS STANDARD IN OWNER'S SUITE, GREAT ROOM & REC/BONUS/LOFT (SELECT HOMES)
- PHONE LOCATIONS STANDARD IN OWNER'S SUITE, GREAT ROOM & REC/BONUS/LOFT (SELECT HOMES)
- COMPREHENSIVE **2-10 HOME WARRANTY**

### Highlights

- GORGEOUS LAMINATE HARDWOOD FLOORS THROUGHOUT MAIN FLOOR
- QUARTZ SLAB KITCHEN COUNTERTOPS WITH QUARTZ BACKSPLASH
- TALL CEILINGS ON MAIN FLOOR
- WHITE PAINTED MILLWORK & DOORS THROUGHOUT

### UPGRADE OPTIONS

#### Interior Selections

- STAINLESS STEEL APPLIANCE UPGRADE (DISHWASHER, MICO-HOOD AND RANGE)
- APPLIANCES
  - BLACK SIDE BY SIDE REFRIGERATOR
  - PREMIUM STAINLESS STEEL SIDE BY SIDE REFRIGERATOR
  - GE WASHER AND DRYER
- WINDOW COVERINGS
- ADDITIONAL CABLE OR PHONE JACKS PRIOR TO ELEC. R-I (PER BID AFTER R-I)

#### Exterior Selections

- GARAGE DOOR OPENER WITH REMOTE
- EXTERIOR KEYPAD FOR GARAGE DOOR OPENER
- 6' CEDAR FENCE
- 6' CEDAR GATE

FOR PRICING ON LISTED UPGRADE OPTIONS,  
PLEASE CONTACT OUR LISTING AGENT.

FEATURES, SPECIFICATIONS, TERMS, AND CONDITIONS ARE SUBJECT TO CHANGE WITHOUT NOTICE. DUE TO CONSTRUCTION SCHEDULES, UPGRADE AVAILABILITY IS NOT GUARANTEED.