

ASH WAY TOWNHOMES

Building | C3

THE ALDER

3 

2.5 

2 

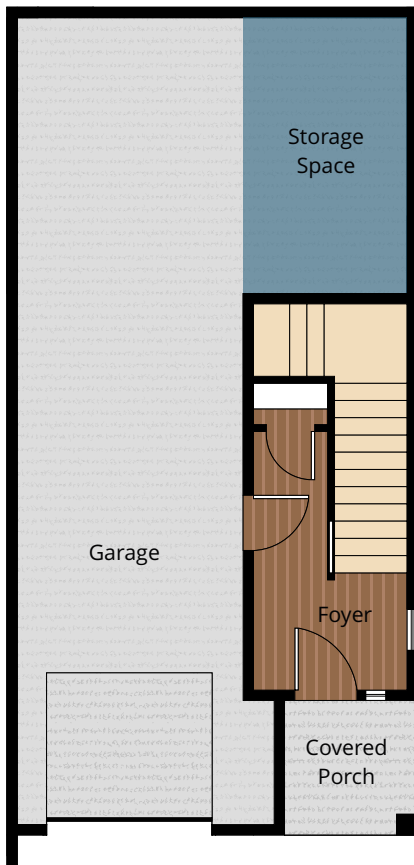
1,689  SQ. FT.



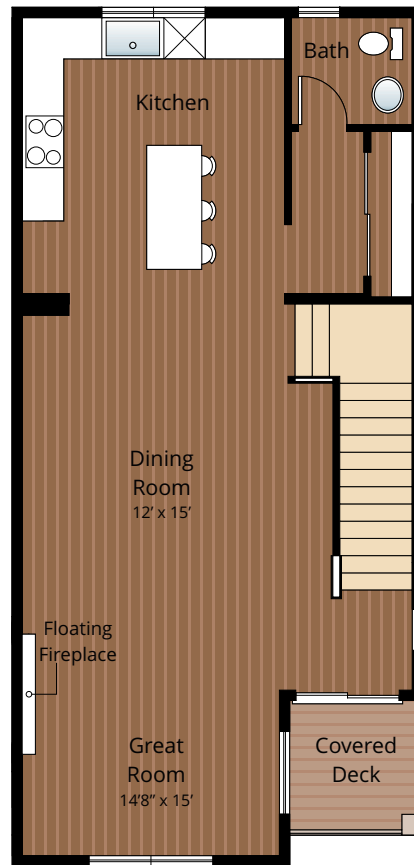
\$379,950

SALES EVENT!

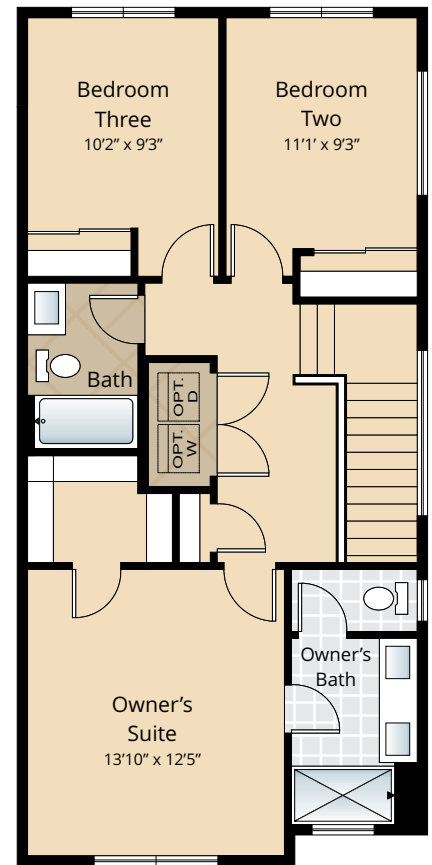
Photographs are for illustrative purposes only. Features, finishes, landscaping and floorplan shown may vary from actual homes built.



LOWER



MAIN



UPPER

Due to construction schedules, upgrade availability is not guaranteed.

All renderings, floorplans, maps, and displays are for illustrative purpose only. Any dimensions and square footages included are approximate and all prices, specifications, terms, and conditions are subject to change without notice.



 Windermere

Ebrima Wadda
Windermere Real Estate/HKW, Inc.
ebrima@windermere.com • 425-921-1465



CORNERSTONE HOMES
CornerstoneHomes.com

STANDARD

Kitchens

- QUARTZ SLAB COUNTERTOPS WITH MODERN TILE BACKSPLASH
- WOOD STAINED CABINETS WITH CROWN MOLDING
- EFFICIENT, HIGH QUALITY, GE STAINLESS STEEL DISHWASHER, BUILT IN MICROWAVE, & GAS RANGE
- GORGEOUS ENGINEERED HARDWOOD FLOORS
- ELEGANT, SINGLE BOWL, STAINLESS-STEEL KITCHEN SINK
- STYLISH, HIGH ARC PULL OUT/PULL DOWN KITCHEN FAUCET
- SLEEK RECESSED LIGHTING
- USB CHARGING OUTLET

Living Spaces

- STAIN RESISTANT CARPET THROUGHOUT
- DURABLE EASY MAINTENANCE VINYL FLOORING IN LAUNDRY ROOM AND UPPER & LOWER FLOOR BATHROOMS (SELECT HOMES)
- GORGEOUS ENGINEERED HARDWOOD FLOORS AT ENTRY, KITCHEN GREAT ROOM & DINING
- RUBBERMAID WIRE SHELVING SYSTEM IN CLOSETS
- WHITE PAINTED MILLWORK THROUGHOUT
- WHITE PAINTED FIVE PANEL DOORS WITH CHROME HARDWARE
- VAULTED CEILING (SELECT HOMES) & WALK-IN CLOSET IN OWNER'S SUITE
- STUNNING, FLOATING ELECTRIC FIREPLACE WITH TILE SURROUND
- 9' HIGH CEILINGS ON MAIN FLOOR

Baths

- QUARTZ SLAB COUNTERTOPS ON MAIN AND OWNER'S SUITE BATHROOM VANITIES
- BEAUTIFUL LOW MAINTENANCE VINYL FLOORING IN UPPER & LOWER FLOOR BATHROOMS (SELECT HOMES)
- DOUBLE SINKS IN OWNER'S SUITE
- ELEGANT TILE SHOWER W/FIBERGLASS PAN IN OWNER'S SUITE

Exteriors

- PROFESSIONAL LANDSCAPING
- PREMIUM FIBERGLASS ENTRY DOOR WITH GLASS ACCENTS
- BRUSHED EXTERIOR FLATWORK
- LOW-MAINTENANCE, LIFETIME-WARRANTED WINDOWS WITH SCREENS
- CONTEMPORARY GARAGE DOORS WITH VERTICAL GLASS PANELS
- COVERED DECK
- COVERED ENTRY
- 25 YEAR WARRANTED FIBER CEMENT SIDING
- 30 YEAR ARCHITECTURAL COMPOSITION SHINGLES

Everyday Details

- EFFICIENT DUCTLESS HEAT PUMP FOR COOLING/HEATING ON MAIN LEVEL & OWNER'S SUITE
- ZONED ELECTRIC WALL HEATING THROUGHOUT THE REST OF HOME
- SMART PANEL NETWORKING THROUGHOUT
- WIFI ENABLED GARAGE DOOR OPENER
- PRE-INSTALLED CONNECTIONS FOR ICE MAKER
- COMPREHENSIVE **2-10 HOME WARRANTY**

Highlights

- GORGEOUS ENGINEERED HARDWOOD FLOORS
- QUARTZ SLAB COUNTERTOPS WITH MODERN TILE BACKSPLASH
- WOOD STAINED CABINETS AND STAINLESS STEEL APPLIANCES IN KITCHEN
- WHITE PAINTED MILLWORK THROUGHOUT

UPGRADE OPTIONS

Interior Selections

- APPLIANCES
 - PREMIUM STAINLESS STEEL SIDE BY SIDE REFRIGERATOR
 - GE WASHER AND DRYER
- WINDOW COVERINGS
- ADDITIONAL CABLE OR PHONE JACKS PRIOR TO ELEC. R-I (PER BID AFTER R-I)

Exterior Selections

- EXTERIOR KEYPAD FOR GARAGE DOOR OPENER

FOR PRICING ON LISTED UPGRADE OPTIONS,
PLEASE CONTACT OUR LISTING AGENT.

FEATURES, SPECIFICATIONS, TERMS, AND CONDITIONS ARE SUBJECT TO CHANGE WITHOUT NOTICE. DUE TO CONSTRUCTION SCHEDULES, UPGRADE AVAILABILITY IS NOT GUARANTEED.