

Model 1127

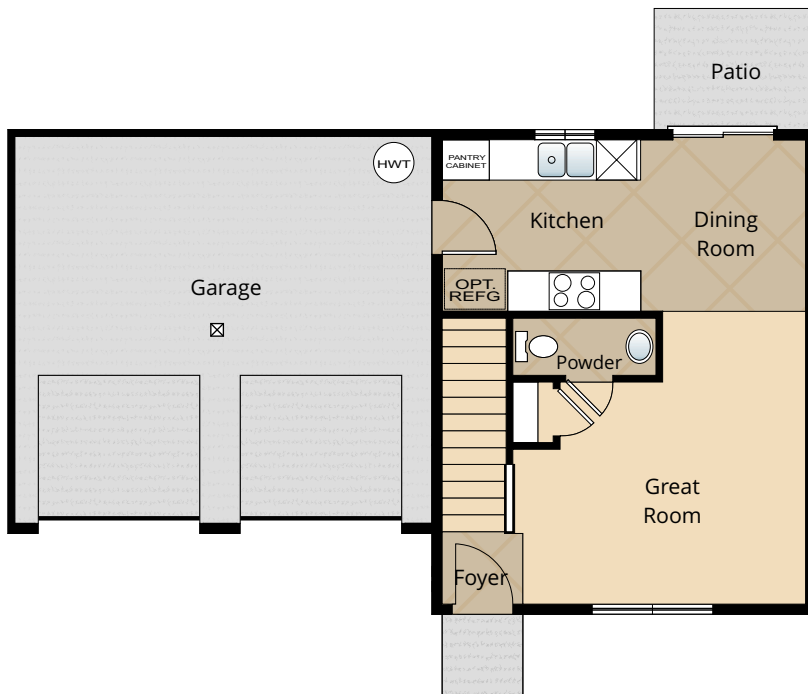
3 BED

2.5 BATH

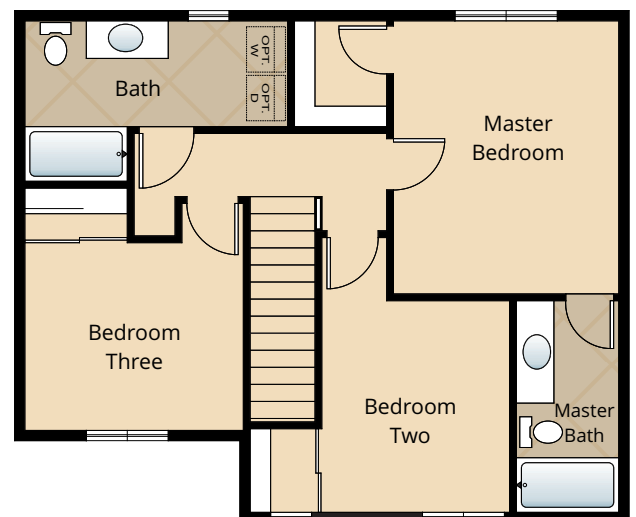
2 CAR GARAGE

1,127 SQ. FT.

SOLD



MAIN FLOOR



UPPER FLOOR

All renderings, floorplans, maps, and displays are for illustrative purpose only. Any dimensions and square footages included are approximate and all prices, specifications, terms, and conditions are subject to change without notice.

STANDARD

Kitchens

- DESIGNER BIRCH CABINETS
- EASY TO CLEAN, LOW MAINTENANCE VINYL FLOORING
- MODERN AND DURABLE LAMINATE COUNTERTOPS WITH TILE BACKSPLASH
- EFFICIENT, HIGH QUALITY, GE BLACK DISHWASHER, BUILT IN MICROWAVE, & SMOOTH-TOP, SELF CLEANING RANGE
- STAINLESS-STEEL KITCHEN SINK WITH GARBAGE DISPOSAL

Living Spaces

- STAIN RESISTANT CARPET THROUGHOUT
- DURABLE EASY MAINTENANCE VINYL FLOORING IN LAUNDRY ROOM, BATHROOMS AND ENTRY
- RUBBERMAID WIRE SHELVING SYSTEM IN CLOSETS
- FACTORY FINISH BASE, CASING AND TRIM
- FACTORY FINISH FLUSH PANEL DOORS WITH CHROME HARDWARE
- VAULTED CEILINGS (SELECT HOMES)

Baths

- TRADITIONAL MASTER BATH WITH EASY TO CLEAN FIBERGLASS TUB SHOWER COMBO
- DESIGNER, LAMINATE COUNTER TOPS WITH TILE BACKSPLASH ON ALL BATHROOM VANITIES
- BEAUTIFUL, LOW MAINTENANCE VINYL FLOORING

Exteriors

- PROFESSIONALLY LANDSCAPED FRONT YARD
- DELIGHTFULLY SPACIOUS BACKYARDS
- PREMIUM FIBERGLASS SIX PANEL ENTRY DOOR WITH SILVER HARDWARE
- LOW-MAINTENANCE, LIFETIME-WARRANTED WINDOWS WITH SCREENS
- STEEL GARAGE DOORS AND RECESSED PANELS
- BACK CONCRETE PATIO/DECK (SELECT HOMES)
- 25 YEAR WARRANTED FIBER CEMENT SIDING
- 30 YEAR ARCHITECTURAL COMPOSITION SHINGLES

Everyday Details

- EFFICIENT ELECTRIC WALL HEAT WITH THERMOSTATS
- 40 GALLON, ECONOMICAL, HIGH EFFICIENCY ELECTRIC HOT WATER HEATER
- PHONE AND CABLE LOCATIONS STANDARD IN MASTER BED AND GREAT ROOM

Highlights

- DESIGNER BIRCH CABINETS AT KITCHEN
- PROFESSIONALLY LANDSCAPED FRONT YARD
- SPACIOUS BACKYARDS
- MODERN & DURABLE LAMINATE COUNTER TOPS WITH TILE BACKSPLASH IN KITCHEN & ON ALL BATHROOM VANITIES
- THOUGHTFULLY DESIGNED FLOORPLANS

OPTIONAL SELECTIONS*

Interior Selections

- GRANITE SLAB COUNTERTOP IN KITCHEN WITH GRANITE BACKSPLASH**
- STAINLESS STEEL APPLIANCE UPGRADE (DISHWASHER, MICRO-HOOD AND RANGE)
- APPLIANCES
 - BLACK SIDE BY SIDE REFRIGERATOR
 - PREMIUM STAINLESS STEEL SIDE BY SIDE REFRIGERATOR
 - GE WASHER AND DRYER
- WINDOW COVERINGS
- ADDITIONAL CABLE OR PHONE JACKS PRIOR TO ELEC. R-I (PER BID AFTER R-I)**

Exterior Selections

- GARAGE DOOR OPENER WITH TWO REMOTES
- EXTERIOR KEYPAD FOR GARAGE DOOR OPENER
- 6' CEDAR FENCE
- CEDAR GATE

*SEE LISTING AGENT FOR PRICING ON
OPTIONAL SELECTIONS.