

Model 2033

4 BED

3 BATH

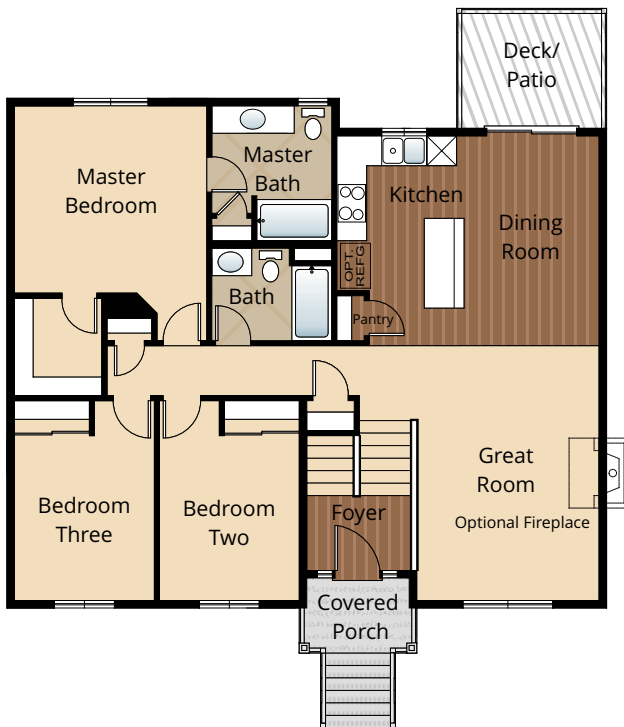
3 CAR GARAGE

2,033 SQ. FT.

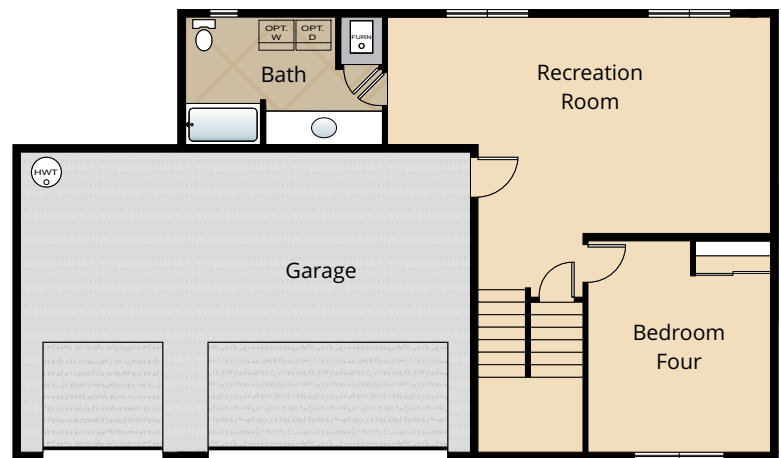
SOLD



Above Elevation not representative of actual home. Actual Elevation TBD.



MAIN FLOOR



LOWER FLOOR

All renderings, floorplans, maps, and displays are for illustrative purpose only. Any dimensions and square footages included are approximate and all prices, specifications, terms, and conditions are subject to change without notice.

STANDARD

Kitchens

- DESIGNER BIRCH CABINETS
- GORGEOUS LAMINATE HARDWOOD FLOORS
- MODERN AND DURABLE LAMINATE COUNTERTOPS WITH TILE BACKSPLASH
- EFFICIENT, HIGH QUALITY, GE BLACK DISHWASHER, BUILT IN MICROWAVE, & SMOOTH-TOP, SELF CLEANING RANGE
- STAINLESS-STEEL KITCHEN SINK WITH GARBAGE DISPOSAL
- SLEEK RECESSED LIGHTING WITH WHITE TRIM
- DURABLE WIRE SHELVEING IN PANTRY

Living Spaces

- STAIN RESISTANT CARPET THROUGHOUT
- DURABLE EASY MAINTENANCE VINYL FLOORING IN LAUNDRY ROOM AND BATHROOMS.
- GORGEOUS LAMINATE HARDWOOD FLOORS AT ENTRY, KITCHEN & DINING
- RUBBERMAID WIRE SHELVEING SYSTEM IN CLOSETS
- FACTORY FINISH BASE, CASING AND TRIM
- FACTORY FINISH FLUSH PANEL DOORS WITH CHROME HARDWARE
- VAULTED CEILINGS IN GREAT ROOM & MASTER (SELECT HOMES)

Baths

- DISTINCTIVE CHROME FAUCET WITH LEVER HANDLES IN MASTER BATH
- DESIGNER, LAMINATE COUNTER TOPS WITH TILE BACKSPLASH ON ALL BATHROOM VANITIES
- BEAUTIFUL, LOW MAINTENANCE VINYL FLOORING

Exteriors

- PROFESSIONAL LANDSCAPING
- EXTERIOR STONE ACCENTS ON FRONT OF HOME
- PREMIUM FIBERGLASS SIX PANEL ENTRY DOOR WITH SILVER HARDWARE
- EXPOSED AGGREGATE EXTERIOR FLATWORK
- LOW-MAINTENANCE, LIFETIME-WARRANTED WINDOWS WITH SCREENS
- STEEL GARAGE DOORS WITH RECESSED PANELS
- BACK CONCRETE PATIO OR DECK (SELECT HOMES)
- COVERED ENTRY
- 25 YEAR WARRANTED FIBER CEMENT SIDING
- 30 YEAR ARCHITECTURAL COMPOSITION SHINGLES

Everyday Details

- 95% EFFICIENT GAS FURNACE WITH PROGRAMMABLE THERMOSTAT
- 40 GALLON, NATURAL GAS, ECONOMICAL HOT WATER HEATER
- PHONE AND CABLE LOCATIONS STANDARD IN ALL BEDROOMS AND GREAT ROOM

Highlights

- GORGEOUS LAMINATE HARDWOOD FLOORS
- MODERN & DURABLE LAMINATE COUNTER TOPS WITH TILE BACKSPLASH ON ALL BATHROOM VANITIES
- QUALITY BIRCH CABINETS AT KITCHEN
- PROFESSIONALLY LANDSCAPED FRONT & BACK YARDS
- EXTERIOR STONE ACCENTS ON FRONT OF HOME

OPTIONAL SELECTIONS*

Interior Selections

- GRANITE SLAB COUNTERTOP IN KITCHEN WITH GRANITE BACKSPLASH**
- STAINLESS STEEL APPLIANCE UPGRADE (DISHWASHER, MICO-HOOD AND RANGE)
- GAS FIREPLACE
- APPLIANCES
 - BLACK SIDE BY SIDE REFRIGERATOR
 - PREMIUM STAINLESS STEEL SIDE BY SIDE REFRIGERATOR
 - GE WASHER AND DRYER
- WINDOW COVERINGS
- WHITE PAINTED MILLWORK
- ADDITIONAL CABLE OR PHONE JACKS PRIOR TO ELEC. R-I (PER BID AFTER R-I)**

Exterior Selections

- GARAGE DOOR OPENER WITH TWO REMOTES
- EXTERIOR KEYPAD FOR GARAGE DOOR OPENER
- 6' CEDAR FENCE
- 6' CEDAR GATE

***SEE LISTING AGENT FOR PRICING ON
OPTIONAL SELECTIONS.**

FEATURES, SPECIFICATIONS, TERMS, AND CONDITIONS ARE SUBJECT TO CHANGE WITHOUT NOTICE.

**PRICES AND AVAILABILITY SUBJECT TO CHANGE ONCE DRYWALL HAS BEEN INSTALLED