

Model 2082

3 BED

2.5 BATH

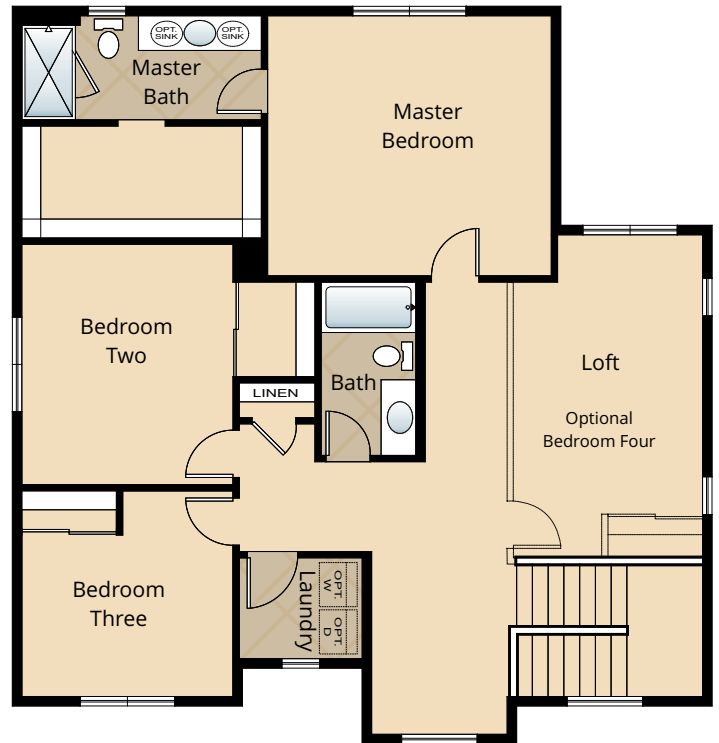
2 CAR GARAGE

2,082 SQ. FT.

SOLD



MAIN FLOOR



UPPER FLOOR

All renderings, floorplans, maps, and displays are for illustrative purpose only. Any dimensions and square footages included are approximate and all prices, specifications, terms, and conditions are subject to change without notice.

STANDARD

Kitchens

- GRANITE SLAB COUNTERTOPS WITH GRANITE BACKSPLASH
- DESIGNER BIRCH CABINETS WITH CROWN MOLDING
- EFFICIENT, HIGH QUALITY, GE STAINLESS STEEL DISHWASHER, BUILT IN MICROWAVE, & GAS RANGE
- GORGEOUS LAMINATE HARDWOOD FLOORS
- STAINLESS-STEEL KITCHEN SINK WITH GARBAGE DISPOSAL
- SLEEK RECESSED LIGHTING

Living Spaces

- STAIN RESISTANT CARPET THROUGHOUT
- DURABLE EASY MAINTENANCE VINYL FLOORING IN LAUNDRY ROOM AND UPPER FLOOR BATHROOMS
- GORGEOUS LAMINATE HARDWOOD FLOORS AT ENTRY, KITCHEN DINING, & POWDER BATH
- RUBBERMAID WIRE SHELVING SYSTEM IN CLOSETS
- WHITE PAINTED MILLWORK THROUGHOUT
- WHITE PAINTED TWO PANEL DOORS WITH CHROME HARDWARE
- VAULTED CEILINGS AND WALK-IN CLOSET IN MASTER (PER PLAN)
- GAS FIREPLACE WITH TILE SURROUND (PER PLAN)

Highlights

- GORGEOUS LAMINATE HARDWOOD FLOORS
- GRANITE SLAB COUNTERTOPS WITH GRANITE BACKSPLASH
- QUALITY BIRCH CABINETS AND STAINLESS STEEL APPLIANCES AT KITCHEN
- WHITE PAINTED MILLWORK THROUGHOUT

Exteriors

- PROFESSIONAL LANDSCAPING
- EXTERIOR STONE ACCENTS ON FRONT OF HOME
- PREMIUM FIBERGLASS SIX PANEL ENTRY DOOR WITH SILVER HARDWARE
- EXPOSED AGGREGATE EXTERIOR FLATWORK
- LOW-MAINTENANCE, LIFETIME-WARRANTED WINDOWS WITH SCREENS
- STEEL GARAGE DOORS WITH WINDOWS
- BACK CONCRETE PATIO OR DECK (PER PLAN)
- COVERED ENTRY
- 25 YEAR WARRANTED FIBER CEMENT SIDING
- 30 YEAR ARCHITECTURAL COMPOSITION SHINGLES

Everyday Details

- 95% EFFICIENT GAS FURNACE WITH PROGRAMMABLE THERMOSTAT
- 40 GALLON, NATURAL GAS, ECONOMICAL HOT WATER HEATER
- PHONE AND CABLE LOCATIONS STANDARD IN ALL BEDROOMS AND GREAT ROOM
- SMART PANEL NETWORKING THROUGHOUT

Baths

- DESIGNER LAMINATE COUNTER TOPS WITH TILE BACKSPLASH ON ALL BATHROOM VANITIES
- BEAUTIFUL LOW MAINTENANCE VINYL FLOORING
- RELAXING TUB INCLUDED IN MASTER BATH (PER PLAN)
- DOUBLE SINKS INCLUDED IN MASTER BATH (PER PLAN)

OPTIONAL

Interior Selections

- ADDITIONAL APPLIANCES
 - PREMIUM STAINLESS STEEL SIDE BY SIDE REFRIGERATOR
 - GE WASHER AND DRYER
- WINDOW COVERINGS
- ADDITIONAL CABLE OR PHONE JACKS PRIOR TO ELEC. R-I (PER BID AFTER R-I)*

Exterior Selections

- GARAGE DOOR OPENER WITH TWO REMOTES
- EXTERIOR KEYPAD FOR GARAGE DOOR OPENER
- 6' CEDAR FENCE
- 6' CEDAR GATE

SEE LISTING AGENT FOR PRICING ON
OPTIONAL SELECTIONS.

Features, specifications, terms, and conditions are subject to change without notice.

*PRICES SUBJECT TO CHANGE ONCE DRYWALL HAS BEEN INSTALLED