

Model 1460

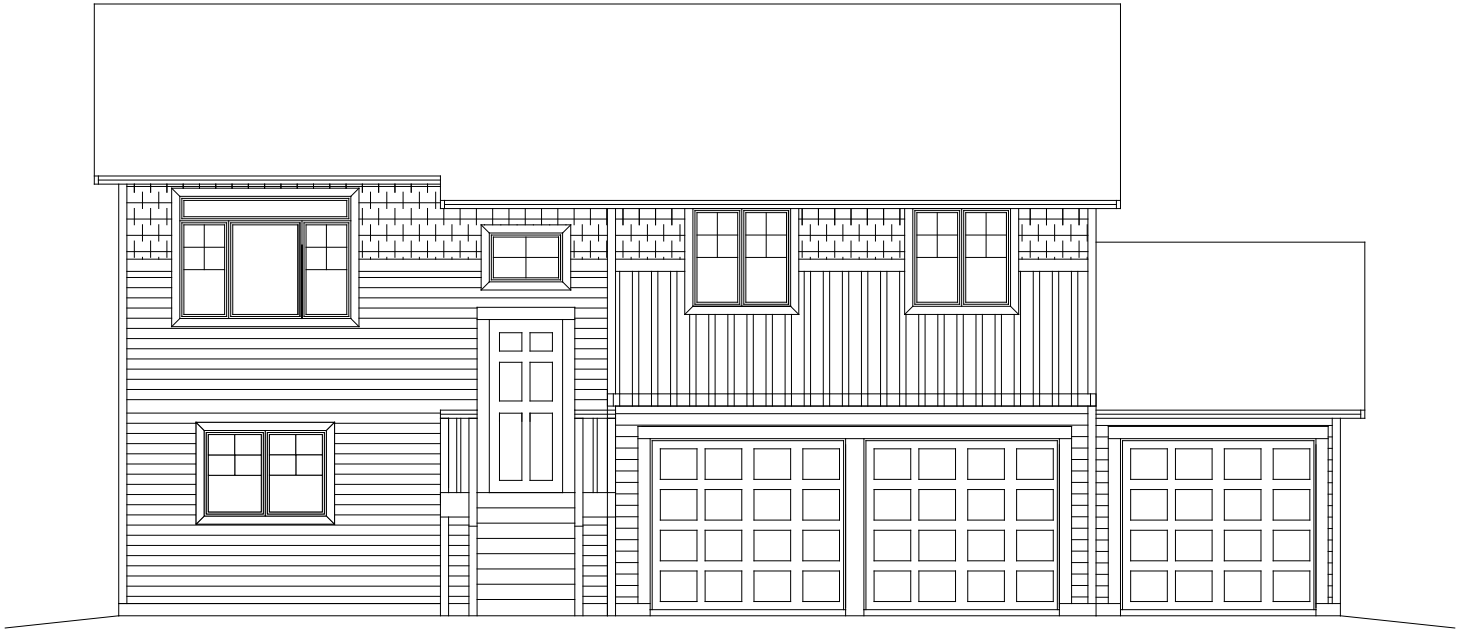
3 BED

2.75 BATH

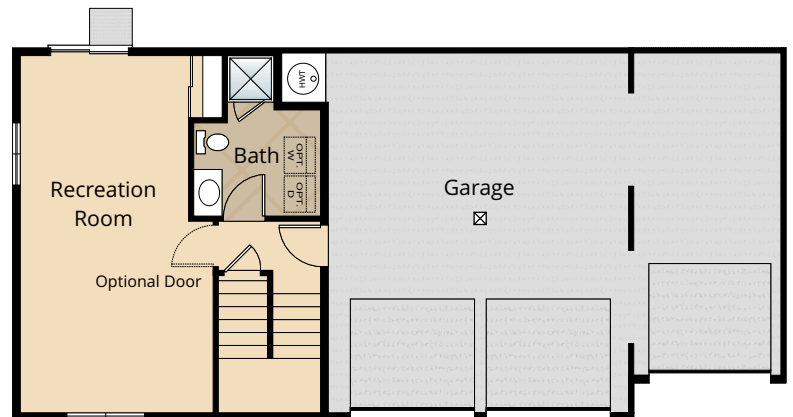
3 CAR GARAGE

1,460 SQ. FT.

SOLD



MAIN FLOOR



LOWER FLOOR

All renderings, floorplans, maps, and displays are for illustrative purpose only. Any dimensions and square footages included are approximate and all prices, specifications, terms, and conditions are subject to change without notice.

## STANDARD

### Kitchens

- DESIGNER BIRCH CABINETS
- EASY TO CLEAN, LOW MAINTENANCE VINYL FLOORING
- MODERN AND DURABLE LAMINATE COUNTERTOPS WITH TILE BACKSPLASH
- EFFICIENT, HIGH QUALITY, GE BLACK DISHWASHER, BUILT IN MICROWAVE, & SMOOTH-TOP, SELF CLEANING RANGE
- STAINLESS-STEEL KITCHEN SINK WITH GARBAGE DISPOSAL

### Living Spaces

- STAIN RESISTANT CARPET THROUGHOUT
- DURABLE EASY MAINTENANCE VINYL FLOORING IN LAUNDRY ROOM, BATHROOMS AND ENTRY
- RUBBERMAID WIRE SHELVING SYSTEM IN CLOSETS
- FACTORY FINISH BASE, CASING AND TRIM
- FACTORY FINISH FLUSH PANEL DOORS WITH CHROME HARDWARE

### Baths

- TRADITIONAL MASTER BATH WITH EASY TO CLEAN FIBERGLASS TUB SHOWER COMBO
- DESIGNER, LAMINATE COUNTER TOPS WITH TILE BACKSPLASH ON ALL BATHROOM VANITIES
- BEAUTIFUL, LOW MAINTENANCE VINYL FLOORING

### Exteriors

- SPACIOUS 1+ ACRE LOTS
- 3 CAR GARAGES PLANS AVAILABLE
- PREMIUM FIBERGLASS SIX PANEL ENTRY DOOR WITH SILVER HARDWARE
- LOW-MAINTENANCE, LIFETIME-WARRANTED WINDOWS WITH SCREENS
- STEEL GARAGE DOORS AND RECESSED PANELS
- BACK CONCRETE PATIO
- HIGH QUALITY KAYCAN VINYL SIDING
- 30 YEAR ARCHITECTURAL COMPOSITION SHINGLES

### Everyday Details

- EFFICIENT ELECTRIC WALL HEAT WITH THERMOSTATS
- 40 GALLON, ECONOMICAL, HIGH EFFICIENCY ELECTRIC HOT WATER HEATER
- PHONE AND CABLE LOCATIONS STANDARD IN MASTER BED AND GREAT ROOM

## Highlights

- DESIGNER BIRCH CABINETS AT KITCHEN
- 3 CAR GARAGE PLANS AVAILABLE
- SPACIOUS 1+ ACRE LOTS
- MODERN & DURABLE LAMINATE COUNTER TOPS WITH TILE BACKSPLASH IN KITCHEN & ON ALL BATHROOM VANITIES
- THOUGHTFULLY DESIGNED FLOORPLANS

## OPTIONAL

### Interior Selections

- GRANITE SLAB COUNTERTOP IN KITCHEN WITH GRANITE BACKSPLASH\*
- STAINLESS STEEL APPLIANCE UPGRADE (DISHWASHER, MICRO-HOOD AND RANGE)
- COMPLEMENTARY APPLIANCES
  - BLACK SIDE BY SIDE REFRIGERATOR
  - PREMIUM STAINLESS STEEL SIDE BY SIDE REFRIGERATOR
  - GE WASHER AND DRYER
- WINDOW COVERINGS
- ADDITIONAL CABLE OR PHONE JACKS PRIOR TO ELEC. R-I (PER BID AFTER R-I)\*

### Exterior Selections

- GARAGE DOOR OPENER WITH TWO REMOTES
- EXTERIOR KEYPAD FOR GARAGE DOOR OPENER
- 6' CEDAR FENCE
- CEDAR GATE

Features, specifications, terms, and conditions are subject to change without notice.

\*PRICES AND AVAILABILITY SUBJECT TO CHANGE ONCE DRYWALL HAS BEEN INSTALLED