

Model 3140

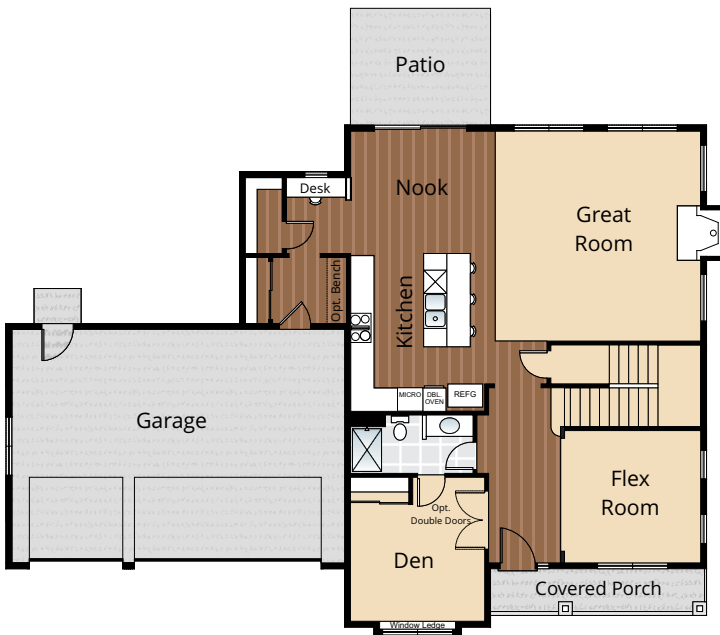
4 BED

2.75 BATH

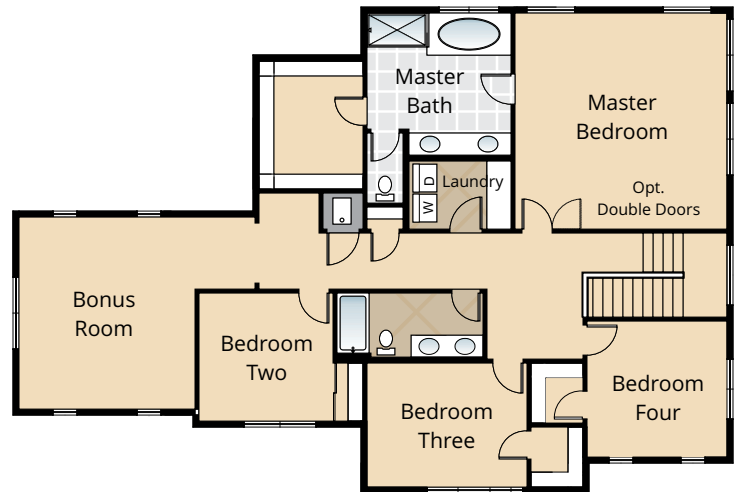
2 CAR GARAGE

3,140 SQ. FT.

SOLD



MAIN FLOOR



UPPER FLOOR

All renderings, floorplans, maps, and displays are for illustrative purpose only. Any dimensions and square footages included are approximate and all prices, specifications, terms, and conditions are subject to change without notice.

STANDARD

Contemporary Kitchens

- GRANITE COUNTERTOPS WITH FULL HEIGHT, COMPLEMENTARY CLASSIC SUBWAY TILE BACKSPLASH
- SOFT CLOSE, LOCALLY MADE ESPRESSO STAINED MAPLE CABINETS WITH CROWN MOLDING
- STREAMLINE OVEN MICRO COMBO (PER PLAN) COMPLIMENT THE HIGH QUALITY, GE STAINLESS-STEEL DISHWASHER & GAS COOKTOP
- GORGEOUS HAND SCRAPED HARDWOOD FLOORS
- STAINLESS-STEEL KITCHEN SINK WITH GARBAGE DISPOSAL
- SLEEK RECESSED LIGHTING
- DURABLE WIRE SHELVEING IN WALK-IN-PANTRY

Eye Catching Interiors

- GAS FIREPLACE WITH WHITE MANTEL AND MALTESE TILE SURROUND
- GORGEOUS HAND SCRAPED HARDWOOD IN FOYER, KITCHEN, MUDROOM AND DINING/NOOK
- VAULTED CEILINGS TO ACCENT A ROOM (PER PLAN)
- 9' CEILINGS ON MAIN FLOOR
- WHITE PAINTED 5 PANEL DOORS
- CHROME HARDWARE THROUGHOUT
- WHITE PAINTED MILLWORK THROUGHOUT
- DECORATIVE, WRAPPED WINDOWS ON MAIN FLOOR

Highlights

- GORGEOUS HAND SCRAPED HARDWOOD FLOORS
- GRANITE COUNTERTOPS, QUALITY MAPLE CABINETS AND STAINLESS STEEL APPLIANCES IN KITCHEN
- 5 PIECE MASTER SUITE BATHROOM INCLUDING TILE COUNTERTOPS, FLOOR, AND BACKSPLASH
- GAS FIREPLACE WITH WHITE MANTEL & TILE SURROUND
- PROFESSIONALLY LANDSCAPED FRONT & BACK YARDS

Noteworthy Exteriors

- BEAUTIFUL LANDSCAPING WITH ABUNDANT PLANTS
- EXTERIOR STONE ACCENTS ON FRONT OF HOME (PER PLAN)
- COVERED ENTRY WITH PINE PORCH SOFFITS
- BACK CONCRETE PATIO (PER PLAN)
- CEDAR DECK (PER PLAN)
- WHITE PAINTED RAILINGS
- THREE PANEL FIBERGLASS ENTRY DOOR WITH DECORATIVE GLASS AND DENTIL SHELF
- EXPOSED AGGREGATE EXTERIOR FLATWORK W/INSET AT STEPS
- DURABLE, LOW IMPACT PERVIOUS DRIVEWAYS
- LOW-MAINTENANCE, LIFETIME-WARRANTED WINDOWS WITH SCREENS
- STEEL GARAGE DOORS W/WINDOWS
- 25 YEAR WARRANTED FIBER CEMENT SIDING
- 30 YEAR ARCHITECTURAL COMPOSITION SHINGLES

Functional Living Spaces

- STAIN RESISTANT WALL TO WALL CARPET THROUGHOUT
- DURABLE LOW MAINTENANCE VINYL FLOORING IN LAUNDRY ROOM AND MAIN BATH
- ELEGANT TILE FLOORING IN MASTER SUITE & POWDER BATH

Everyday Details

- SMART PANEL NETWORKING THROUGHOUT
- 95% EFFICIENT GAS FURNACE WITH PROGRAMMABLE THERMOSTAT
- 50 GALLON, NATURAL GAS HOT WATER HEATER

Luxurious Baths

- 5-PIECE MASTER SUITE INCLUDING RELAXING SOAKER TUB AND STATELY TILE SHOWER INCASD IN A BEAUTIFUL GLASS SHOWER DOOR
- DESIGNER, CERAMIC TILE COUNTER TOPS WITH GLASS MOSAIC BACKSPLASH
- LIFETIME MOEN FAUCETS THROUGHOUT

OPTIONAL

Interior Selections

- COMPLEMENTARY APPLIANCES
 - BLACK SIDE BY SIDE REFRIGERATOR
 - PREMIUM STAINLESS STEEL SIDE BY SIDE REFRIGERATOR
 - GE WASHER AND DRYER
- WINDOW COVERINGS
- ADDITIONAL CABLE OR PHONE JACKS PRIOR TO ELEC. R-I (PER BID AFTER R-I)

Exterior Selections

- GARAGE DOOR OPENER WITH TWO REMOTES
- EXTERIOR KEYPAD FOR GARAGE DOOR OPENER
- 6' CEDAR FENCE
- 6' CEDAR GATE

Features, specifications, terms, and conditions are subject to change without notice.

*PRICES SUBJECT TO CHANGE ONCE DRYWALL HAS BEEN INSTALLED