

MODEL 1856



2.75

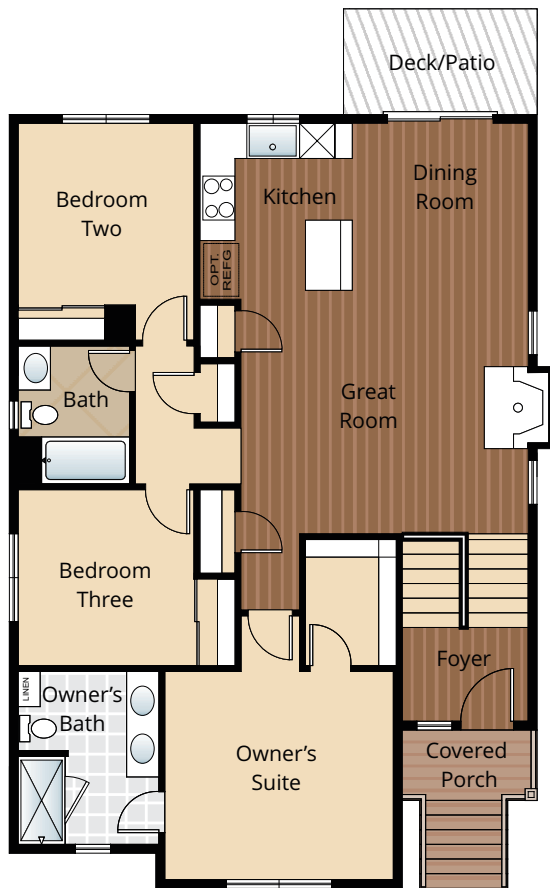


1,856

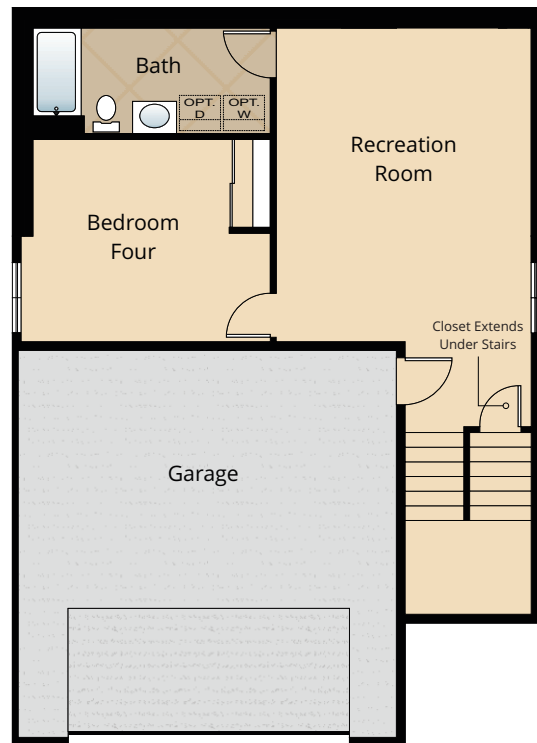
\$569,950



Photographs are for illustrative purposes only. Features, finishes, landscaping and floorplan shown may vary from actual homes built.



MAIN FLOOR



LOWER FLOOR

Due to construction schedules, upgrade availability is not guaranteed. All renderings, floorplans, maps, and displays are for illustrative purpose only. Any dimensions and square footages included are approximate and all prices, specifications, terms, and conditions are subject to change without notice.

STANDARD

Kitchens

- QUARTZ SLAB COUNTERTOPS WITH MODERN TILE BACKSPLASH
- WOOD STAINED CABINETS WITH CROWN MOLDING
- EFFICIENT, HIGH QUALITY, GE STAINLESS STEEL DISHWASHER, BUILT IN MICROWAVE, & GAS RANGE
- GORGEOUS ENGINEERED HARDWOOD FLOORS
- ELEGANT, SINGLE BOWL, STAINLESS-STEEL KITCHEN SINK
- STYLISH, HIGH ARC PULL OUT/PULL DOWN KITCHEN FAUCET
- SLEEK RECESSED LIGHTING
- USB CHARGING OUTLET

Living Spaces

- STAIN RESISTANT CARPET THROUGHOUT
- DURABLE EASY MAINTENANCE VINYL FLOORING IN LAUNDRY ROOM AND UPPER & LOWER FLOOR BATHROOMS (SELECT HOMES)
- GORGEOUS ENGINEERED HARDWOOD FLOORS AT ENTRY, KITCHEN GREAT ROOM & DINING
- RUBBERMAID WIRE SHELVING SYSTEM IN CLOSETS
- WHITE PAINTED MILLWORK THROUGHOUT
- WHITE PAINTED FIVE PANEL DOORS WITH CHROME HARDWARE
- VAULTED CEILING (SELECT HOMES) & WALK-IN CLOSET IN OWNER'S SUITE
- STUNNING, FLOATING GAS FIREPLACE WITH ACCENT SURROUND
- 9' HIGH CEILINGS ON MAIN FLOOR
- DARK STAINED WOOD TV ACCENT FRAME IN GREAT ROOM
- SLEEK INTERIOR IRON RAILING ACCENTS

Baths

- QUARTZ SLAB COUNTERTOPS ON MAIN AND OWNER'S SUITE BATHROOM VANITIES
- BEAUTIFUL LOW MAINTENANCE VINYL FLOORING IN UPPER & LOWER FLOOR BATHROOMS (SELECT HOMES)
- DOUBLE SINKS IN OWNER'S SUITE & MAIN BATHROOM (SELECT HOMES)
- ELEGANT TILE SHOWER W/FIBERGLASS PAN IN OWNER'S SUITE

Exteriors

- PROFESSIONAL LANDSCAPING
- PREMIUM FIBERGLASS ENTRY DOOR WITH GLASS ACCENTS
- BRUSHED EXTERIOR FLATWORK
- LOW-MAINTENANCE, LIFETIME-WARRANTED WINDOWS WITH SCREENS
- CONTEMPORARY GARAGE DOORS WITH ACCENT GLASS PANELS
- BACK CONCRETE PATIO AND/OR DECK (SELECT HOMES)
- PAINTED CEDAR RAILINGS ON ALL DECKS AND/OR FRONT PORCHES
- COVERED ENTRY
- 25 YEAR WARRANTED FIBER CEMENT SIDING
- 30 YEAR ARCHITECTURAL COMPOSITION SHINGLES

Everyday Details

- 95% EFFICIENT GAS FURNACE WITH WIFI CONNECTED THERMOSTAT FEATURING SMARTPHONE CLIMATE ADJUSTMENT
- NATURAL GAS, TANKLESS HOT WATER HEATER
- SMART PANEL NETWORKING THROUGHOUT
- WIFI ENABLED GARAGE DOOR OPENER
- PRE-INSTALLED CONNECTIONS FOR ICE MAKER

Highlights

- GORGEOUS ENGINEERED HARDWOOD FLOORS
- QUARTZ SLAB COUNTERTOPS WITH MODERN TILE BACKSPLASH
- WOOD STAINED CABINETS AND STAINLESS STEEL APPLIANCES IN KITCHEN
- WHITE PAINTED MILLWORK THROUGHOUT

UPGRADE OPTIONS

Interior Selections

- APPLIANCES
 - PREMIUM STAINLESS STEEL SIDE BY SIDE REFRIGERATOR
 - GE WASHER AND DRYER
 - GAS FIREPLACE FAN
- WINDOW COVERINGS
- ADDITIONAL CABLE OR PHONE JACKS PRIOR TO ELEC. R-I (PER BID AFTER R-I)

Exterior Selections

- EXTERIOR KEYPAD FOR GARAGE DOOR OPENER
- 6' CEDAR FENCE
- 4' CEDAR GATE

FOR ADDITIONAL UPGRADE INQUIRIES & PRICING ON AVAILABLE UPGRADE OPTIONS, PLEASE CONTACT LISTING AGENT.

FEATURES, SPECIFICATIONS, TERMS, AND CONDITIONS ARE SUBJECT TO CHANGE WITHOUT NOTICE. DUE TO CONSTRUCTION SCHEDULES, UPGRADE AVAILABILITY IS NOT GUARANTEED.