

MODEL 1968

4 

2.75 

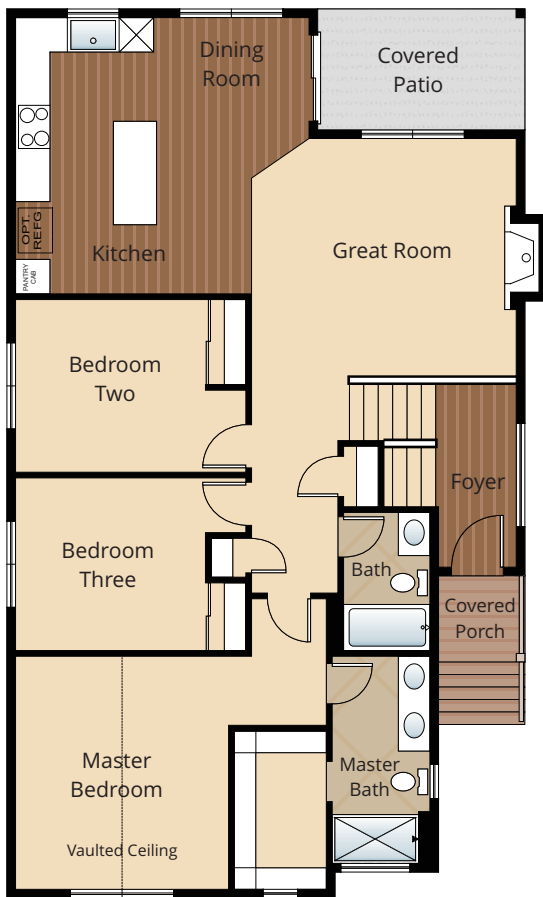
2 

1,968 

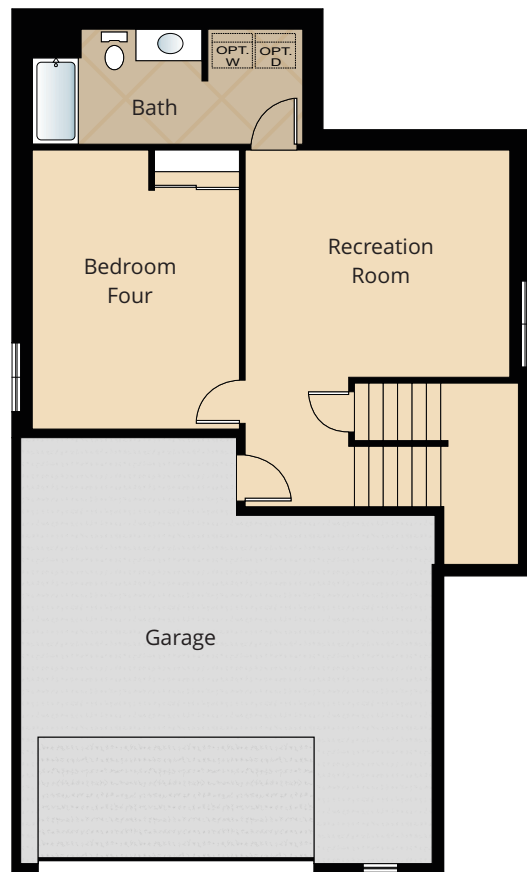
\$504,950



Photographs are for illustrative purposes only. Features, finishes, landscaping and floorplan shown may vary from actual homes built.



MAIN FLOOR



LOWER FLOOR

Due to construction schedules, upgrade availability is not guaranteed. All renderings, floorplans, maps, and displays are for illustrative purpose only. Any dimensions and square footages included are approximate and all prices, specifications, terms, and conditions are subject to change without notice.

STANDARD

Kitchens

- GRANITE OR QUARTZ SLAB COUNTERTOPS WITH MATCHING BACKSPLASH
- WOOD STAINED CABINETS WITH CROWN MOLDING
- EFFICIENT, HIGH QUALITY, **GE** STAINLESS STEEL DISHWASHER, BUILT IN MICROWAVE, & GAS RANGE
- GORGEOUS LAMINATE HARDWOOD FLOORS
- STAINLESS-STEEL KITCHEN SINK WITH GARBAGE DISPOSAL & PULL OUT FAUCET
- SLEEK RECESSED LIGHTING
- USB CHARGING OUTLET

Living Spaces

- STAIN RESISTANT CARPET THROUGHOUT
- DURABLE EASY MAINTENANCE VINYL FLOORING IN LAUNDRY ROOM AND BATHROOMS
- GORGEOUS LAMINATE HARDWOOD FLOORS AT ENTRY, KITCHEN & DINING
- RUBBERMAID WIRE SHELVING SYSTEM IN CLOSETS
- WHITE PAINTED MILLWORK THROUGHOUT
- WHITE PAINTED TWO PANEL DOORS WITH BRUSHED CHROME HARDWARE
- VAULTED CEILING & WALK-IN CLOSET IN MASTER (SELECT HOMES)
- COZY GAS FIREPLACE
- 9' CEILINGS ON MAIN FLOOR

Baths

- DESIGNER LAMINATE COUNTERTOPS WITH TILE BACKSPLASH ON ALL BATHROOM VANITIES
- BEAUTIFUL LOW MAINTENANCE VINYL FLOORING
- DOUBLE SINKS INCLUDED IN MASTER BATH (SELECT HOMES)

Exteriors

- PROFESSIONAL LANDSCAPING
- EXTERIOR STONE ACCENTS ON FRONT OF HOME
- PREMIUM FIBERGLASS SIX PANEL ENTRY DOOR WITH SILVER HARDWARE
- EXPOSED AGGREGATE EXTERIOR FLATWORK
- LOW-MAINTENANCE, LIFETIME-WARRANTED WINDOWS WITH SCREENS
- STEEL GARAGE DOORS WITH DECORATIVE GLASS
- BACK CONCRETE PATIO AND/OR DECK (SELECT HOMES)
- COVERED ENTRY
- 25 YEAR WARRANTED FIBER CEMENT SIDING
- 30 YEAR ARCHITECTURAL COMPOSITION SHINGLES

Everyday Details

- 95% EFFICIENT GAS FURNACE WITH PROGRAMMABLE THERMOSTAT (3 STORY HOMES WILL HAVE ELECTRIC WALL HEAT ON LOWER LEVEL)
- NATURAL GAS, TANKLESS HOT WATER HEATER
- SMART PANEL NETWORKING THROUGHOUT
- PRE-INSTALLED CONNECTIONS FOR GARAGE DOOR OPENER & ICE MAKER

Highlights

- GORGEOUS LAMINATE HARDWOOD FLOORS
- GRANITE OR QUARTZ SLAB COUNTERTOPS WITH MATCHING BACKSPLASH
- WOOD STAINED CABINETS AND STAINLESS STEEL APPLIANCES IN KITCHEN
- WHITE PAINTED MILLWORK THROUGHOUT

UPGRADE OPTIONS

Interior Selections

- APPLIANCES
 - PREMIUM STAINLESS STEEL SIDE BY SIDE REFRIGERATOR
 - **GE** WASHER AND DRYER
 - GAS FIREPLACE FAN
- WINDOW COVERINGS
- ADDITIONAL CABLE OR PHONE JACKS PRIOR TO ELEC. R-I (PER BID AFTER R-I)

Exterior Selections

- GARAGE DOOR OPENER WITH TWO REMOTES
- EXTERIOR KEYPAD FOR GARAGE DOOR OPENER
- 6' CEDAR FENCE
- 6' CEDAR GATE

FOR ADDITIONAL UPGRADE INQUIRIES & PRICING ON AVAILABLE UPGRADE OPTIONS, PLEASE CONTACT LISTING AGENT.

FEATURES, SPECIFICATIONS, TERMS, AND CONDITIONS ARE SUBJECT TO CHANGE WITHOUT NOTICE. DUE TO CONSTRUCTION SCHEDULES, UPGRADE AVAILABILITY IS NOT GUARANTEED.